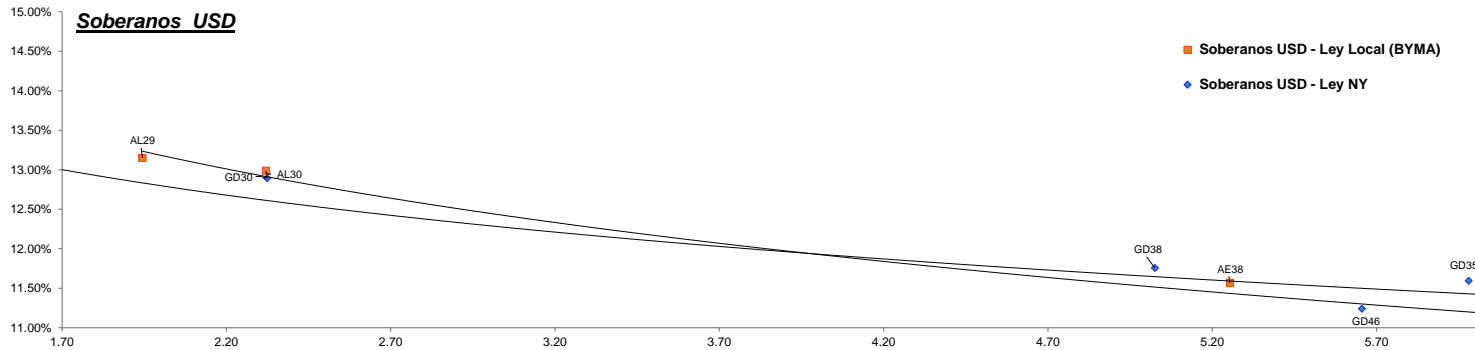


Fixed Income Research

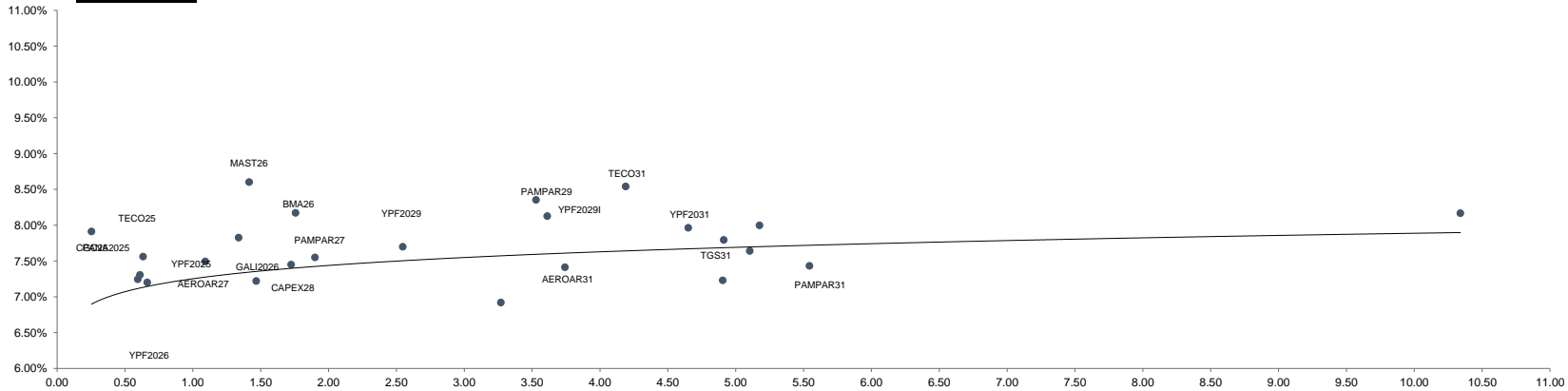
Bond	Ticker	Maturity	V.R. (%)	Price	TIR	TNA	Next coupon	Cupon	Frec	Parity	M Dur	Outstanding (MM)	31-oct	MoM
Soberanos USD														
Bonos Intern. 2029 Ley N.Y. - Step up	GD29	09-jul-29	100.00%	77.77	13.19%	12.79%	09-ene-25	1.000%	Sem.	78%	1.70	\$ 2,635.03	71.84	8.25%
Bonos Intern. 2030 Ley N.Y. - Step up	GD30	09-jul-30	96.00%	73.83	13.31%	12.89%	09-ene-25	0.750%	Sem.	74%	2.32	\$ 15,446.99	67.34	9.64%
Bonos Intern. 2035 Ley N.Y. - Step up	GD35	09-jul-35	100.00%	63.45	11.93%	11.59%	09-ene-25	4.125%	Sem.	64%	5.98	\$ 20,501.72	55.40	14.53%
Bonos Intern. 2038 Ley N.Y. - Step up	GD38	09-ene-38	100.00%	67.46	12.10%	11.76%	09-ene-25	5.000%	Sem.	68%	5.03	\$ 11,405.07	59.89	12.64%
Bonos Intern. 2041 Ley N.Y. - Step up	GD41	09-jul-41	100.00%	59.57	11.61%	11.29%	09-ene-25	3.500%	Sem.	60%	6.25	\$ 10,482.11	51.49	15.69%
Bonos Intern. 2046 Ley N.Y. - Step up	GD46	09-jul-46	100.00%	63.57	11.56%	11.24%	09-ene-25	4.125%	Sem.	64%	5.66	\$ 2,092.00	57.43	10.69%
BONAR 2029 - step up (BYMA)	AL29	09-jul-29	100.00%	77.22	13.58%	13.15%	09-ene-25	1.000%	Sem.	77%	1.94	\$ 1,394.90	69.59	10.96%
BONAR 2030 - step up (BYMA)	AL30	09-jul-30	96.00%	73.67	13.41%	12.99%	09-ene-25	0.750%	Sem.	74%	2.32	\$ 13,038.05	62.93	17.07%
BONAR 2035 - step up (BYMA)	AL35	09-jul-35	100.00%	65.13	11.49%	11.17%	09-ene-25	4.125%	Sem.	66%	6.10	\$ 10,151.85	56.54	15.19%
BONAR 2038 - step up (BYMA)	AE38	09-ene-38	100.00%	68.15	11.90%	11.57%	09-ene-25	5.000%	Sem.	69%	5.25	\$ 7,231.45	56.54	20.53%
BONAR 2041 - step up (BYMA)	AL41	09-jul-41	100.00%	61.07	11.22%	10.92%	09-ene-25	3.500%	Sem.	62%	6.50	\$ 1,542.23	52.01	17.42%
Soberanos Euros														
Bonos Intern. 2029 Euros - Step up	GE29	09-jul-29	100.00%	73.86	15.37%	14.82%	09-ene-25	0.500%	Sem.	74%	1.66	\$ 90.39	68.50	7.82%
Bonos Intern. 2030 Euros - Step up	GE30	09-jul-30	96.00%	70.49	14.24%	13.76%	09-ene-25	0.125%	Sem.	71%	2.07	\$ 1,118.97	64.33	9.58%
Bonos Intern. 2035 Euros - Step up	GE35	09-jul-35	100.00%	58.74	12.30%	11.95%	09-ene-25	3.875%	Sem.	59%	6.04	\$ 298.80	50.32	16.73%
Bonos Intern. 2038 Euros - Step up	GE38	09-ene-38	100.00%	61.81	12.74%	12.36%	09-ene-25	4.250%	Sem.	62%	5.06	\$ 809.34	54.71	12.98%
Bonos Intern. 2041 Euros - Step up	GE41	09-jul-41	100.00%	55.57	12.03%	11.69%	09-ene-25	3.000%	Sem.	56%	6.31	\$ 1,572.60	47.60	16.74%
Bonos Intern. 2046 Euros - Step up	GE46	09-jul-46	100.00%	58.19	12.31%	11.95%	09-ene-25	3.750%	Sem.	59%	5.57	\$ 248.13	51.78	12.38%
Banco Central USD														
BOPREAL Serie 1A	BPOA7	30-abr-25	100.00%	92.85	25.93%	24.43%	30-abr-25	5.000%	Sem.	93%	0.33	\$ 996.00	93.93	-1.15%
BOPREAL Serie 2	BPJ25	30-jun-25	58.33%	58.80	-2.23%	-2.23%	31-dic-24	0.000%	Mens.	101%	0.41	\$ 1,833.40	65.66	-10.45%
BOPREAL Serie 1B	BPOB7	30-abr-26	100.00%	89.48	13.90%	13.45%	30-abr-25	5.000%	Sem.	90%	1.21	\$ 996.00	89.32	0.18%
BOPREAL Serie 3	BPY26	31-may-26	100.00%	91.25	11.01%	10.72%	28-feb-25	3.000%	Sem.	91%	1.16	\$ 892.00	88.69	2.89%
BOPREAL Serie 1C	BPOC7	30-abr-27	100.00%	84.26	13.21%	12.80%	30-abr-25	5.000%	Sem.	84%	2.02	\$ 1,494.00	84.69	-0.51%
BOPREAL Serie 1D	BPOD7	31-oct-27	100.00%	84.08	12.56%	12.19%	30-abr-25	5.000%	Sem.	84%	2.22	\$ 1,494.00	83.73	0.42%
Provinciales														
Buenos Aires 2037A	BA37D	01-sep-37	96.34%	64.89	16.35%	15.73%	03-mar-25	6.625%	Sem.	65%	4.07	\$ 5,973.08	58.08	11.73%
Buenos Aires 2037B	BB37D	01-sep-37	100.00%	57.16	15.50%	14.95%	01-mar-25	5.875%	Sem.	58%	5.46	\$ 770.00	51.33	11.36%
Buenos Aires 2037C	BC37D	01-sep-37	100.00%	46.62	18.46%	17.68%	01-mar-25	5.250%	Sem.	47%	5.24	\$ 150.00	42.57	9.51%
Ciudad de Bs. As. 2027	CABA27	01-jun-27	100.00%	99.73	7.85%	7.70%	01-jun-25	7.500%	Sem.	100%	1.37	\$ 890.00	102.95	-3.13%
Cordoba 2025	PDCAR25	10-dic-25	50.00%	98.33	10.44%	10.18%	10-dic-24	3.000%	Sem.	98%	0.47	\$ 339.50	97.70	0.64%
Cordoba 2027	PDCAR27	01-jun-27	100.00%	93.70	11.40%	11.10%	01-jun-25	3.000%	Sem.	94%	1.56	\$ 494.00	93.52	0.19%
Cordoba 2029	PDCAR29	01-feb-29	100.00%	91.84	9.96%	9.72%	01-feb-25	3.000%	Sem.	92%	2.86	\$ 433.00	88.47	3.81%
Ciudad de Córdoba 2027	COROA27	29-sep-27	75.00%	82.91	21.89%	20.80%	29-mar-25	Step-up	Sem.	83%	1.25	\$ 421.50	79.48	4.32%
Mendoza 2029	PMM29	19-mar-29	69.23%	91.81	10.20%	9.95%	19-mar-25	2.750%	Sem.	92%	1.95	\$ 389.08	91.08	0.80%
Chubut 2030	CHUBT30	26-jul-30	60.33%	96.13	10.33%	9.95%	27-ene-25	7.750%	Trim.	96%	0.44	\$ 392.17	95.67	0.48%
Neuquen 2030 (No Garant)	NEU30A	27-abr-30	84.62%	94.57	9.32%	9.11%	27-abr-25	2.500%	Sem.	95%	2.43	\$ 309.69	93.19	1.48%
Neuquen 2030 (Garant)	NEU30M	12-may-30	67.77%	102.78	7.70%	7.48%	12-feb-25	5.170%	Sem.	103%	2.42	\$ 243.63	102.68	0.10%
Santa Fe 2027	SFE27	01-nov-27	100.00%	95.13	10.02%	9.78%	01-may-25	6.900%	Sem.	95%	1.69	\$ 250.00	94.49	0.68%
Rio Negro 2028	PRN28	10-mar-28	77.78%	83.51	19.60%	18.72%	10-mar-25	2.750%	Sem.	84%	1.40	\$ 175.00	85.41	-2.22%
Tierra del fuego 2027	FUE27	17-abr-27	37.00%	97.39	11.60%	11.13%	17-ene-25	8.950%	Trim.	97%	1.18	\$ 75.90	97.79	-0.41%



Fixed Income Research

Bond	Ticker	Maturity	V.R. (%)	Price	TIR	TNA	Next coupon	Cupon	Frec	Parity	M Dur	Outstanding (MM)	31-oct	MoM
Corporativos														
Alimentos y bebidas														
Cresud 2026	CRESUD26	03-mar-26	100.00%	103.46	5.17%	5.11%	03-ene-25	8.000%	Sem.	103%	1.15	\$ 70.57	103.30	0.15%
Mastellone 2026	MAST26	30-jun-26	100.00%	103.81	8.60%	8.34%	30-dic-24	10.950%	Trim.	104%	1.42	\$ 110.87	104.27	-0.44%
Arcor 2027	ARCOR27	09-oct-27	85.72%	103.68	5.85%	5.77%	09-abr-25	8.250%	Sem.	104%	1.47	\$ 109.67	103.55	0.13%
Bancos														
Galicia 2026	GALI2026	19-jul-26	100.00%	101.24	7.22%	7.10%	20-ene-25	8.250%	Sem.	101%	1.47	\$ 250.00	101.03	0.21%
Banco Macro 2026	BMA26	04-nov-26	100.00%	97.59	8.17%	8.01%	04-may-25	6.750%	Sem.	98%	1.76	\$ 400.00	97.01	0.60%
Galicia 2028	GALI2028	10-oct-28	100.00%	103.11	6.92%	6.81%	10-abr-25	7.750%	Sem.	103%	3.27	\$ 325.00	101.41	1.68%
Petróleo y Gas														
Cia Gral de Combustible 2025	CGC25	08-mar-25	33.50%	100.43	7.91%	7.76%	08-mar-25	9.500%	Sem.	100%	0.25	\$ 68.44	100.53	-0.10%
Panamerican Energy 2025	PANA2025	21-jul-25	100.00%	100.05	7.24%	7.12%	21-ene-25	7.250%	Sem.	100%	0.59	\$ 105.15	100.28	-0.23%
Panamerican Energy 2027	PANA2027	30-abr-27	100.00%	104.49	5.80%	5.72%	30-abr-25	9.125%	Sem.	104%	1.30	\$ 300.00	104.99	-0.48%
Pampa Energia 2027	PAMPAR27	24-ene-27	100.00%	100.09	7.55%	7.41%	24-ene-25	7.500%	Sem.	100%	1.90	\$ 750.00	100.07	0.02%
Capex 2028	CAPEX28	25-ago-28	100.00%	103.35	7.45%	7.32%	25-feb-25	9.250%	Sem.	103%	1.72	\$ 188.80	103.62	-0.26%
Pampa Energia 2029	PAMPAR29	15-abr-29	100.00%	103.35	8.35%	8.19%	15-abr-25	9.125%	Sem.	103%	3.53	\$ 300.00	103.55	-0.19%
YPF 2025	YPF2025	28-jul-25	100.00%	100.77	7.31%	7.18%	28-ene-25	8.500%	Sem.	101%	0.61	\$ 1,131.77	100.53	0.24%
YPF2026 (Clase XVI)	YPF2026	12-feb-26	38.46%	101.32	7.20%	7.02%	12-feb-25	4.000%	Trim.	101%	0.66	\$ 298.20	100.80	0.52%
YPF2029 (Clase XVII)	YPF2029	30-jun-29	100.00%	103.78	7.70%	7.56%	30-dic-24	9.000%	Sem.	104%	2.55	\$ 747.00	103.33	0.44%
YPF2029 (Clase I)	YPF2029I	27-jun-29	100.00%	101.92	8.13%	7.97%	27-dic-24	8.500%	Sem.	102%	3.61	\$ 500.00	101.78	0.14%
Transportadora Gas del Sur 2031	TGS31	24-jul-31	100.00%	104.29	7.79%	7.65%	24-ene-25	8.500%	Sem.	104%	4.91	\$ 490.00	103.89	0.39%
Pampa Energia 2031	PAMPAR31	10-sep-31	100.00%	102.30	7.64%	7.50%	10-mar-25	7.950%	Sem.	102%	5.10	\$ 410.00	100.45	1.84%
YPF 2031	YPF2031	10-sep-31	100.00%	104.45	7.96%	7.81%	11-mar-25	8.750%	Sem.	104%	4.65	\$ 500.00	102.40	2.00%
Panamerican Energy 2032	PANA2032	30-abr-32	100.00%	107.01	7.23%	7.11%	30-abr-25	8.500%	Sem.	107%	4.90	\$ 400.00	105.69	1.25%
YPF Luz 2032	YPFL2032	16-oct-32	100.00%	100.10	8.00%	7.84%	16-abr-25	7.875%	Sem.	100%	5.18	\$ 420.00	98.42	1.71%
YPF2033 (Clase XVIII)	YPF2033	30-sep-33	100.00%	98.28	7.43%	7.30%	30-mar-25	7.000%	Sem.	98%	5.54	\$ 575.65	96.77	1.56%
YPF 2047	YPF2047	15-dic-47	100.00%	89.38	8.17%	8.01%	15-dic-24	7.000%	Sem.	90%	10.34	\$ 750.00	84.08	6.30%
Utilidades														
Genneia 2027	GNNEIA27	02-sep-27	60.00%	101.43	7.83%	7.68%	02-mar-25	8.750%	Sem.	101%	1.34	\$ 219.67	101.19	0.24%
Otros														
Telecom 2025	TECO25	06-ago-25	34.00%	100.64	7.56%	7.42%	06-feb-25	8.500%	Sem.	101%	0.63	\$ 112.37	100.73	-0.09%
Aeropuertos Argentina 2000	AEROAR27	01-feb-27	37.50%	99.51	7.49%	7.29%	03-feb-25	9.375%	Trim.	100%	1.09	\$ 114.75	99.65	-0.14%
Telecom 2031	TECO31	18-jul-31	100.00%	104.90	8.54%	8.37%	18-ene-25	9.500%	Sem.	105%	4.19	\$ 617.22	103.56	1.29%
Aeropuertos Argentina 2000	AEROAR31	01-ago-31	100.00%	104.89	7.41%	7.22%	01-feb-25	8.500%	Trim.	105%	3.74	\$ 272.95	104.49	0.38%

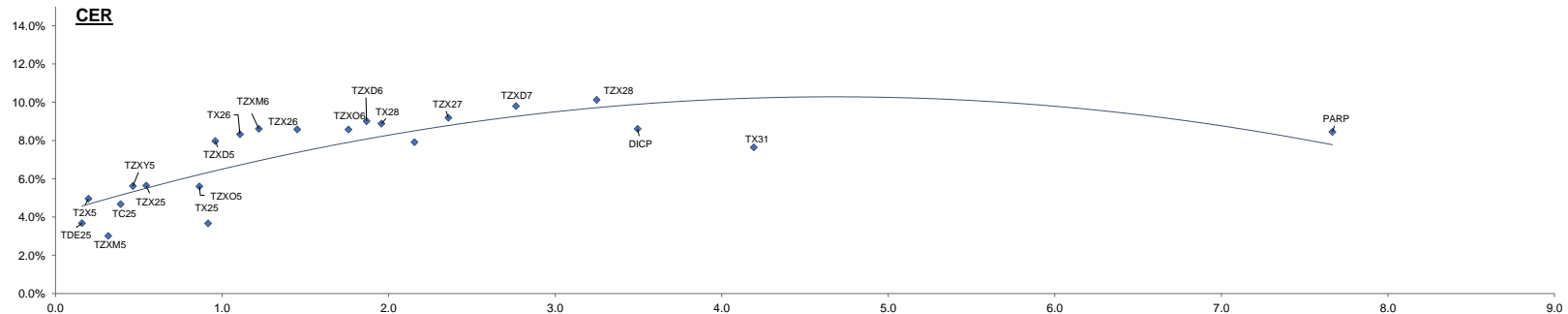
Corporativos



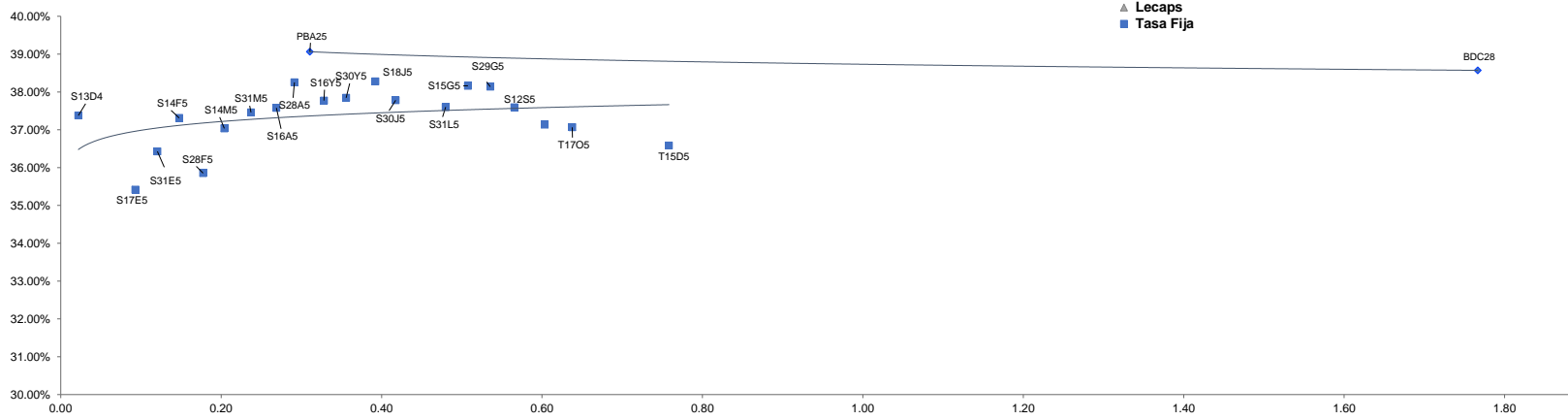
Fixed Income Research

Dólar	1011.75
LeFi	35.00%
Badlar Priv.	37.000%
CER	502.060
SOFR	4.57%

Bond														
Ajustables por CER (*)	Ticker	Maturity	V.R. (%)	Price	TIR	TNA	Next coupon	Cupon	Frec	Parity	M Dur	Outstanding (MM)	31-oct	MoM
Bono del Tesoro CER 12/2024	TSX4	13-dic-24	100.00%	506.70	46.28%	41.87%	13-dic-24	Fija 4.25%	Sem.	99%	0.02	\$ 219,283.00	489.25	3.57%
Bono Dual 01/2025	TDE25	31-ene-25	100.00%	126,500.00	3.73%	3.68%	31-ene-25	Fijo 3.25%	Sem.	100%	0.16	\$ 8,596.00	122,000.00	3.69%
Bono del Tesoro CER 02/2025	T2X5	14-feb-25	100.00%	617.30	5.02%	4.96%	14-feb-25	Fija 4.25%	Sem.	100%	0.20	\$ 2,723,001.00	591.00	4.45%
Bono del Tesoro CER 03/2025	TZXM5	31-mar-25	100.00%	135.90	3.05%	3.01%	31-mar-25	Fijo 0%	Sem.	99%	0.32	\$ 298,559.00	128.10	6.09%
BONCER 2025	TC25	27-abr-25	100.00%	5,479.00	4.73%	4.67%	27-abr-25	Fija 4%	Sem.	100%	0.39	\$ 29,098.00	5,210.00	5.16%
Bono del Tesoro CER 05/2025	TZXY5	30-may-25	100.00%	100.50	5.70%	5.62%	30-may-25	Fijo 0%	Sem.	97%	0.46	\$ 504,865.00	94.40	6.46%
Bono del Tesoro CER 06/2025	TZX25	30-jun-25	100.00%	196.65	5.71%	5.64%	30-jun-25	Fijo 0%	Sem.	97%	0.54	\$ 1,611,109.00	184.40	6.64%
Bono del Tesoro CER 10/2025	TZX05	09-nov-25	100.00%	98.25	5.61%	5.60%	09-nov-25	Fijo 0%	Sem.	95%	0.86	\$ 157,190.00	100.00	-1.75%
Bono del Tesoro CER 11/2025	TX25	09-nov-25	100.00%	1,056.00	3.67%	3.69%	09-nov-25	Fija 1.80%	Sem.	98%	0.92	\$ 266,785.00	974.00	8.42%
Bono del Tesoro CER 12/2025	TZXD5	15-dic-25	100.00%	169.00	7.95%	7.97%	15-dic-25	Fijo 0%	-	92%	0.96	\$ 7,593,347.00	157.00	7.64%
Bono del Tesoro CER 03/2026	TZXM6	31-mar-26	100.00%	132.05	8.49%	8.61%	31-mar-26	Fijo 0%	Sem.	90%	1.22	\$ 1,916,403.00	122.75	7.58%
Bono del Tesoro CER 06/2026	TZX26	30-jun-26	100.00%	218.00	8.38%	8.57%	30-jun-26	Fijo 0%	-	88%	1.45	\$ 3,346,252.00	202.00	7.92%
Bono del Tesoro CER 10/2026	TZX06	30-jun-26	100.00%	88.75	8.26%	8.57%	30-oct-26	Fijo 0%	-	86%	1.76	\$ 1,061,427.00	80.00	10.94%
Bono del Tesoro CER 2026	TX26	09-nov-26	80.00%	1,640.00	8.50%	8.32%	09-may-25	Fija 2.00%	Sem.	93%	1.11	\$ 268,669.60	1,972.00	-16.84%
Bono del Tesoro CER 12/2026	TZXD6	15-dic-26	100.00%	154.60	8.62%	9.01%	15-dic-26	Fijo 0%	-	85%	1.87	\$ 14,424,781.00	142.50	8.49%
Bono del Tesoro CER 03/2027	TZXM7	31-mar-27	100.00%	115.90	7.53%	7.91%	31-mar-27	Fijo 0%	-	84%	2.16	\$ 354,291.00	107.00	8.32%
Bono del Tesoro CER 06/2027	TZX27	30-jun-27	100.00%	200.10	8.60%	9.19%	30-jun-27	Fijo 0%	-	81%	2.36	\$ 2,547,611.00	183.00	9.34%
Bono del Tesoro CER 06/2027	TZXD7	15-dic-27	100.00%	141.00	8.96%	9.80%	15-dic-27	Fijo 0%	-	77%	2.76	\$ 11,944,821.00	130.50	8.05%
Bono del Tesoro CER 12/2028	TZX28	30-jun-28	100.00%	181.65	9.02%	10.12%	30-jun-28	Fijo 0%	-	73%	3.25	\$ 6,677,647.00	168.25	7.96%
Bono del Tesoro CER 11/2028	TX28	09-nov-28	80.00%	1,544.50	9.07%	8.88%	09-may-25	Fija 2.25%	-	109%	1.96	\$ 53,137.05	1,684.50	-8.31%
Bono del Tesoro CER 2031	TX31	30-nov-31	100.00%	840.30	7.79%	7.64%	30-may-25	Fija 2.5%	Sem.	80%	4.19	\$ 45,562.00	775.00	8.43%
Discount \$ Ley Arg.	DICP	31-dic-33	95.00%	38,200.00	8.79%	8.61%	31-dic-24	Fija 5.83%	Sem.	91%	3.49	\$ 9,948.86	35,825.00	6.63%
PAR \$ Ley Arg.	PARP	31-dic-38	100.00%	20,375.00	8.63%	8.45%	31-mar-25	1.77%	Sem.	60%	7.67	\$ 2,858.00	17,920.00	13.70%
Tasa Fija	Ticker	Maturity	V.R. (%)	Price	TIR	TNA	Next coupon	Cupon	TEM	Parity	M Dur	Outstanding (MM)	31-oct	MoM
Letra del Tesoro Capitalizable	S13D4	13-dic-24	100.00%	125.42	45.02%	37.38%	13-dic-24	0.00%	3.10%	125%	0.02	\$ 4,129,433.00	121.18	3.50%
Letra del Tesoro Capitalizable	S17E5	17-ene-25	100.00%	125.58	41.41%	35.41%	17-ene-25	0.00%	2.89%	126%	0.09	\$ 1,289,957.00	120.90	3.87%
Letra del Tesoro Capitalizable	S31E5	31-ene-25	100.00%	162.90	42.44%	36.43%	31-ene-25	0.00%	2.95%	147%	0.12	\$ 2,057,497.00	156.70	3.96%
Letra del Tesoro Capitalizable	S14F5	14-feb-25	100.00%	112.71	43.29%	37.31%	14-feb-25	0.00%	3.00%	113%	0.15	\$ 1,422,200.00	108.55	3.83%
Letra del Tesoro Capitalizable	S28F5	28-feb-25	100.00%	145.80	40.61%	35.85%	28-feb-25	0.00%	2.84%	92%	0.18	\$ 1,127,251.00	139.62	4.43%
Letra del Tesoro Capitalizable	S14M5	14-mar-25	100.00%	114.15	42.25%	37.04%	14-mar-25	0.00%	2.94%	114%	0.20	\$ 800,646.00	110.00	3.77%
Letra del Tesoro Capitalizable	S31M5	31-mar-25	100.00%	138.65	42.39%	37.46%	31-mar-25	0.00%	2.95%	56%	0.24	\$ 611,614.00	132.55	4.60%
Letra del Tesoro Capitalizable	S16A5	16-abr-25	100.00%	115.20	42.17%	37.58%	16-abr-25	0.00%	2.93%	115%	0.27	\$ 995,916.00	110.60	4.16%
Letra del Tesoro Capitalizable	S28A5	28-abr-25	100.00%	113.35	42.73%	38.25%	28-abr-25	0.00%	2.97%	113%	0.29	\$ 989,880.00	108.60	4.37%
Letra del Tesoro Capitalizable	S16Y5	16-may-25	100.00%	116.90	41.73%	37.77%	16-may-25	0.00%	2.91%	117%	0.33	\$ 717,552.00	111.90	4.47%
Letra del Tesoro Capitalizable	S30Y5	30-may-25	100.00%	114.99	41.50%	37.84%	30-may-25	0.00%	2.89%	115%	0.36	\$ 961,263.00	109.60	4.92%
Letra del Tesoro Capitalizable	S18J5	18-jun-25	100.00%	122.30	41.60%	38.28%	18-jun-25	0.00%	2.90%	122%	0.39	\$ 1,588,543.21	116.35	5.11%
Letra del Tesoro Capitalizable	S30J5	30-jun-25	100.00%	120.43	40.76%	37.78%	30-jun-25	0.00%	2.85%	120%	0.42	\$ 917,336.00	114.11	5.54%
Letra del Tesoro Capitalizable	S31L5	31-jul-25	100.00%	118.36	39.91%	37.60%	31-jul-25	0.00%	2.80%	118%	0.48	\$ 332,567.00	112.00	5.68%
Letra del Tesoro Capitalizable	S15G5	15-ago-25	100.00%	115.80	40.24%	38.16%	15-ago-25	0.00%	2.82%	116%	0.51	\$ 746,933.00	109.34	5.91%
Letra del Tesoro Capitalizable	S29G5	29-ago-25	100.00%	123.00	39.93%	38.14%	29-ago-25	0.00%	2.80%	123%	0.54	\$ 1,063,900.00	116.30	5.76%
Letra del Tesoro Capitalizable	S12S5	12-sep-25	100.00%	123.00	39.06%	37.59%	12-sep-25	0.00%	2.75%	123%	0.57	\$ 828,692.00	115.70	6.31%
Letra del Tesoro Capitalizable	S30S5	30-sep-25	100.00%	122.19	38.24%	37.14%	30-sep-25	0.00%	2.70%	122%	0.60	\$ 457,562.00	114.97	6.28%
Bono del Tesoro Capitalizable	T17O5	17-oct-25	100.00%	120.00	37.86%	37.06%	17-oct-25	0.00%	2.67%	120%	0.64	\$ 674,297.00	112.30	6.86%
Letra del Tesoro Capitalizable	T15D5	15-dic-25	100.00%	123.90	36.37%	36.58%	15-dic-25	0.00%	2.58%	124%	0.76	\$ 1,084,427.00	114.25	8.45%
Bote 10/2026	TO26	18-oct-26	100.00%	82.79	31.53%	29.37%	17-abr-25	Fija 15.50%	2.28%	81%	1.43	\$ 96,569.71	74.40	11.28%
Tasa Variable	Ticker	Maturity	V.R. (%)	Price	TIR	TNA	Next coupon	Cupon	Frec	Parity	M Dur	Outstanding (MM)	31-oct	MoM
Ciudad de Buenos Aires 2028	BDC28	31-ene-25	100.00%	104.95	44.52%	38.57%	24-feb-25	Badlar + 375pbs	Trim.	104%	1.77	\$ 13,262.47	110.80	-5.28%
Provincia de Buenos Aires 2025	PBA25	12-abr-25	100.00%	106.15	45.17%	39.06%	13-ene-25	Badlar + 375pbs	Trim.	101%	0.31	\$ 30,000.00	102.60	3.46%
Dólar Linked	Ticker	Maturity	V.R. (%)	Price	TIR	TNA	Next coupon	Cupon	Frec	Parity	M Dur	Outstanding (MM)	31-oct	MoM
Bono Dual 01/2025	TDE25	31-ene-25	100.00%	126,500.00	-74.31%	-121.79%	31-ene-25	0.00%	-	125%	-0.75	\$ 8,596.00	122,000.00	3.69%
Bote vinculado al Dólar 03/2025	TV25	30-mar-25	100.00%	99,300.00	6.78%	6.67%	30-mar-25	0.50%	Sem.	98%	0.31	\$ 329.00	97,880.00	1.45%
Bono del Tesoro vinculado al Dólar 06/2025	TZV25	30-jun-25	100.00%	97,700.00	2.65%	6.18%	30-jun-25	0.00%	-	97%	0.59	\$ 1,763.00	95,100.00	2.73%
Bono del Tesoro vinculado al Dólar 12/2025	TZVD5	15-dic-25	100.00%	93,000.00	8.48%	8.49%	30-jun-25	0.00%	-	92%	1.05	\$ 527.00	92,000.00	1.09%
Bono del Tesoro vinculado al Dólar 06/2026	TZV26	30-jun-26	100.00%	90,500.00	7.33%	7.49%	30-jun-26	0.00%	-	89%	1.58	\$ 383.00	86,000.00	5.23%



Curva Pesos



DISCLAIMER

Este informe ha sido elaborado a título informativo. El presente NO debe ser tomado como una recomendación o instrucción, y n o reviste carácter de ofertas de productos y/o servicios ni solicitud de orden de compra y/o venta. Banco CMF S.A. no será responsable por ningún error y/u omisión del contenido.