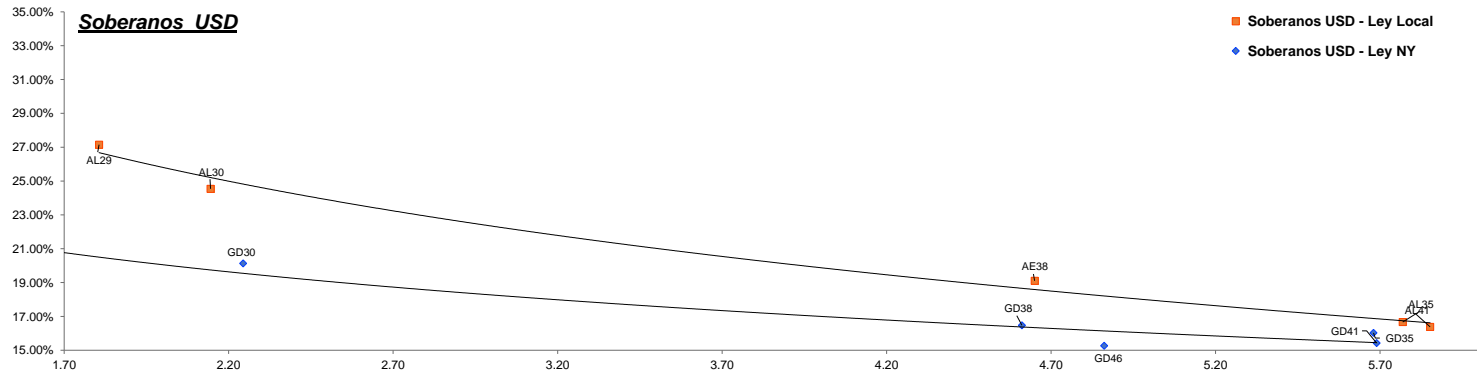


## Fixed Income Research

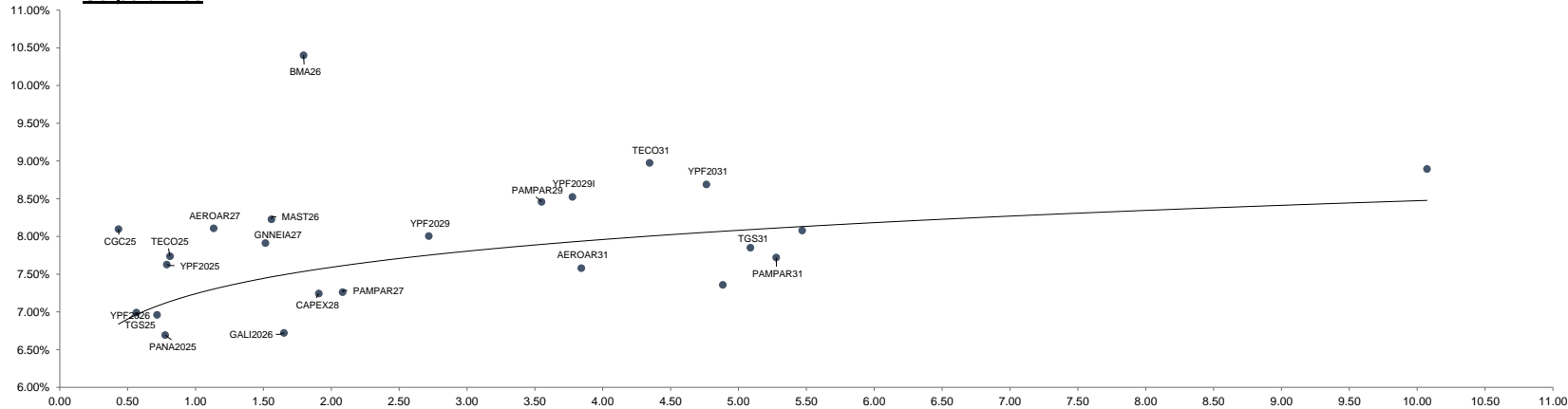
Bond	Ticker	Maturity	V.R. (%)	Price	TIR	TNA	Next coupon	Cupon	Frec	Parity	M Dur	Outstanding (MM)	30-ago	MoM
<b>Soberanos USD</b>														
Bonos Intern. 2029 Ley N.Y. - Step up	GD29	09-jul-29	100.00%	65.17	21.51%	20.46%	09-ene-25	1.000%	Sem.	65%	1.68	\$ 2,635.03	60.31	8.06%
Bonos Intern. 2030 Ley N.Y. - Step up	GD30	09-jul-30	96.00%	60.85	21.15%	20.14%	09-ene-25	0.750%	Sem.	61%	2.24	\$ 15,446.99	57.13	6.51%
Bonos Intern. 2035 Ley N.Y. - Step up	GD35	09-jul-35	100.00%	47.99	16.67%	16.02%	09-ene-25	4.125%	Sem.	48%	5.68	\$ 20,501.72	44.55	7.72%
Bonos Intern. 2038 Ley N.Y. - Step up	GD38	09-ene-38	100.00%	52.34	17.15%	16.48%	09-ene-25	5.000%	Sem.	53%	4.61	\$ 11,405.07	48.77	7.32%
Bonos Intern. 2041 Ley N.Y. - Step up	GD41	09-jul-41	100.00%	45.40	16.02%	15.42%	09-ene-25	3.500%	Sem.	46%	5.69	\$ 10,482.11	41.84	8.51%
Bonos Intern. 2046 Ley N.Y. - Step up	GD46	09-jul-46	100.00%	50.41	15.84%	15.26%	09-ene-25	4.125%	Sem.	51%	4.86	\$ 2,092.00	46.83	7.64%
BONAR 2029 - step up	AL29	09-jul-29	100.00%	59.28	27.15%	27.15%	09-ene-25	1.000%	Sem.	59%	1.81	\$ 1,394.90	56.46	4.99%
BONAR 2030 - step up	AL30	09-jul-30	96.00%	56.89	24.54%	24.54%	09-ene-25	0.750%	Sem.	57%	2.14	\$ 13,038.05	53.46	6.42%
BONAR 2035 - step up	AL35	09-jul-35	100.00%	47.98	16.67%	16.67%	09-ene-25	4.125%	Sem.	48%	5.77	\$ 10,151.85	44.61	7.55%
BONAR 2038 - step up	AE38	09-ene-38	100.00%	47.98	19.10%	19.10%	09-ene-25	5.000%	Sem.	49%	4.65	\$ 7,231.45	44.61	7.55%
BONAR 2041 - step up	AL41	09-jul-41	100.00%	44.50	19.10%	16.38%	09-ene-25	3.500%	Sem.	45%	5.85	\$ 1,542.23	40.56	9.71%
<b>Soberanos Euros</b>														
Bonos Intern. 2029 Euros - Step up	GE29	09-jul-29	100.00%	62.30	23.31%	23.31%	09-ene-25	0.500%	Sem.	62%	1.65	\$ 90.39	55.91	11.43%
Bonos Intern. 2030 Euros - Step up	GE30	09-jul-30	96.00%	57.37	22.69%	22.69%	09-ene-25	0.125%	Sem.	57%	1.98	\$ 1,118.97	53.37	7.49%
Bonos Intern. 2035 Euros - Step up	GE35	09-jul-35	100.00%	43.85	17.24%	17.24%	09-ene-25	3.875%	Sem.	44%	5.71	\$ 298.80	40.73	7.66%
Bonos Intern. 2038 Euros - Step up	GE38	09-ene-38	100.00%	47.70	17.84%	17.84%	09-ene-25	4.250%	Sem.	48%	4.65	\$ 809.34	44.50	7.19%
Bonos Intern. 2041 Euros - Step up	GE41	09-jul-41	100.00%	40.85	17.02%	17.02%	09-ene-25	3.000%	Sem.	41%	5.67	\$ 1,572.60	38.02	7.44%
Bonos Intern. 2046 Euros - Step up	GE46	09-jul-46	100.00%	45.94	16.87%	16.87%	09-ene-25	3.750%	Sem.	46%	4.78	\$ 248.13	43.22	6.29%
<b>Banco Central USD</b>														
BOPREAL Serie 1A	BPOA7	30-abr-25	100.00%	91.70	21.53%	20.49%	31-oct-24	5.000%	Sem.	92%	0.48	\$ 996.00	88.56	3.55%
BOPREAL Serie 2	BPJ25	30-jun-25	83.33%	81.90	4.69%	4.64%	30-sep-24	0.000%	Mens.	98%	0.37	\$ 1,833.40	75.59	8.35%
BOPREAL Serie 1B	BPOB7	30-abr-26	100.00%	83.22	18.26%	17.50%	31-oct-24	5.000%	Sem.	84%	1.27	\$ 996.00	76.44	8.87%
BOPREAL Serie 3	BPY26	31-may-26	100.00%	85.05	15.62%	15.05%	30-nov-24	3.000%	Sem.	85%	1.30	\$ 892.00	80.18	6.07%
BOPREAL Serie 1C	BPOC7	30-abr-27	100.00%	77.49	16.55%	15.92%	31-oct-24	5.000%	Sem.	78%	2.02	\$ 1,494.00	71.46	8.44%
BOPREAL Serie 1D	BPOD7	31-oct-27	100.00%	76.58	16.09%	15.49%	31-oct-24	5.000%	Sem.	77%	2.20	\$ 1,494.00	69.42	10.31%
<b>Provinciales</b>														
Buenos Aires 2037A	BA37D	01-sep-37	96.34%	49.01	24.23%	22.91%	01-mar-25	6.625%	Sem.	49%	3.50	\$ 5,973.08	45.42	7.90%
Buenos Aires 2037B	BB37D	01-sep-37	100.00%	42.09	21.75%	20.68%	01-mar-25	5.875%	Sem.	42%	4.96	\$ 770.00	38.66	8.87%
Buenos Aires 2037C	BC37D	01-sep-37	100.00%	39.90	21.62%	20.56%	01-mar-25	5.250%	Sem.	40%	5.08	\$ 150.00	36.84	8.31%
Ciudad de Bs. As. 2027	CABA27	01-jun-27	100.00%	102.30	6.09%	6.00%	01-dic-24	7.500%	Sem.	102%	1.52	\$ 890.00	101.17	1.12%
Cordoba 2025	PDCAR25	10-dic-25	50.00%	96.45	12.62%	12.25%	10-dic-24	3.000%	Sem.	97%	0.64	\$ 339.50	94.85	1.69%
Cordoba 2027	PDCAR27	01-jun-27	100.00%	89.97	13.47%	13.04%	01-ene-24	3.000%	Sem.	90%	1.66	\$ 494.00	87.31	3.05%
Cordoba 2029	PDCAR29	01-feb-29	100.00%	84.03	12.91%	12.52%	01-feb-25	3.000%	Sem.	84%	2.97	\$ 433.00	78.39	7.19%
Ciudad de Córdoba 2027	COROA27	29-sep-27	87.50%	79.68	26.71%	25.13%	29-sep-24	Step-up	Sem.	80%	1.08	\$ 491.75	78.85	1.05%
Mendoza 2029	PMM29	19-mar-29	69.23%	91.51	10.04%	9.80%	19-mar-25	2.750%	Sem.	92%	2.14	\$ 389.08	87.26	4.87%
Chubut 2030	CHUBT30	26-jul-30	64.18%	94.77	11.08%	10.65%	28-oct-24	7.750%	Trim.	95%	0.50	\$ 417.19	94.52	0.26%
Neuquen 2030 (No Garant)	NEU30A	27-abr-30	92.31%	89.76	11.72%	11.39%	27-oct-24	2.500%	Sem.	90%	2.22	\$ 337.85	89.40	0.40%
Neuquen 2030 (Garant)	NEU30M	12-may-30	70.85%	102.06	8.01%	7.78%	12-nov-24	5.170%	Sem.	102%	2.44	\$ 254.71	101.60	0.45%
Santa Fe 2027	SFE27	01-nov-27	100.00%	93.03	10.99%	10.70%	01-nov-24	6.900%	Sem.	93%	1.80	\$ 250.00	92.43	0.65%
Rio Negro 2028	PRN28	10-mar-28	77.78%	83.26	18.57%	17.78%	10-mar-25	2.750%	Sem.	83%	1.59	\$ 175.00	80.10	3.95%
Tierra del fuego 2027	FUE27	17-abr-27	40.00%	95.74	12.94%	12.36%	17-oct-24	8.950%	Trim.	96%	1.23	\$ 82.05	94.56	1.25%



## Fixed Income Research

Bond	Ticker	Maturity	V.R. (%)	Price	TIR	TNA	Next coupon	Cupon	Frec	Parity	M Dur	Outstanding (MM)	30-ago	MoM
<b>Corporativos</b>														
<b>Alimentos y bebidas</b>														
Cresud 2026	CRESUD26	03-mar-26	100.00%	103.39	5.59%	5.51%	03-ene-25	8.000%	Sem.	103%	1.33	\$ 70.57	102.84	0.53%
Mastellone 2026	MAST26	30-jun-26	100.00%	104.79	8.23%	7.98%	30-sep-24	10.950%	Trim.	105%	1.56	\$ 110.87	104.86	-0.07%
Arcor 2027	ARCOR27	09-oct-27	100.00%	103.70	5.69%	5.62%	09-oct-24	8.250%	Sem.	104%	1.37	\$ 127.94	103.87	-0.16%
<b>Bancos</b>														
Galicia 2026	GALI2026	19-jul-26	100.00%	102.22	6.72%	6.61%	20-ene-25	8.250%	Sem.	102%	1.65	\$ 250.00	101.05	1.16%
Banco Macro 2026	BMA26	04-nov-26	100.00%	98.23	10.40%	10.14%	04-nov-24	6.750%	Sem.	98%	1.80	\$ 400.00	98.85	-0.63%
<b>Petróleo y Gas</b>														
Cia Gral de Combustible 2025	CGC25	08-mar-25	33.50%	100.70	8.10%	7.94%	08-mar-25	9.500%	Sem.	101%	0.43	\$ 68.44	100.43	0.27%
Transportadora Gas del Sur 2025	TGS25	02-may-25	100.00%	99.88	6.99%	6.87%	04-nov-24	6.750%	Sem.	100%	0.56	\$ 500.00	99.88	0.00%
Panamerican Energy 2025	PANA2025	21-jul-25	100.00%	100.51	6.69%	6.58%	21-ene-25	7.250%	Sem.	101%	0.78	\$ 105.15	100.08	0.43%
Panamerican Energy 2027	PANA2027	30-abr-27	100.00%	105.29	5.62%	5.54%	30-oct-24	9.125%	Sem.	105%	1.43	\$ 300.00	104.94	0.33%
Pampa Energia 2027	PAMPAR27	24-ene-27	100.00%	100.71	7.26%	7.13%	24-ene-25	7.500%	Sem.	101%	2.08	\$ 750.00	99.65	1.06%
Capex 2028	CAPEX28	25-ago-28	100.00%	103.29	7.24%	7.12%	25-feb-25	9.250%	Sem.	104%	1.91	\$ 188.80	103.29	0.00%
Pampa Energia 2029	PAMPAR29	15-abr-29	100.00%	103.04	8.46%	8.29%	15-oct-24	9.125%	Sem.	103%	3.55	\$ 300.00	103.23	-0.18%
YPF 2025	YPF2025	28-jul-25	100.00%	100.77	7.63%	7.49%	28-ene-25	8.500%	Sem.	101%	0.79	\$ 1,131.77	101.08	-0.31%
YPF2026 (Clase XVI)	YPF2026	12-feb-26	46.15%	101.57	6.96%	6.79%	12-nov-24	4.000%	Trim.	102%	0.72	\$ 357.84	101.69	-0.12%
YPF2029 (Clase XVII)	YPF2029	30-jun-29	100.00%	103.15	8.01%	7.85%	30-dic-24	9.000%	Sem.	103%	2.72	\$ 747.00	101.80	1.33%
YPF2029 (Clase I)	YPF2029I	27-jun-29	100.00%	100.51	8.52%	8.35%	27-dic-24	8.500%	Sem.	100%	3.78	\$ 500.00	100.06	0.45%
Transportadora Gas del Sur 2031	TGS31	24-jul-31	100.00%	104.11	7.85%	7.70%	24-ene-25	8.500%	Sem.	104%	5.09	\$ 490.00	102.39	1.68%
Pampa Energía 2031	PAMPAR31	10-sep-31	100.00%	101.96	7.72%	7.58%	10-mar-25	7.950%	Sem.	102%	5.28	\$ 410.00	-	-
YPF 2031	YPF2031	10-sep-31	100.00%	101.33	8.69%	8.51%	11-mar-25	7.000%	Sem.	101%	4.76	\$ 500.00	-	-
Panamerican Energy 2032	PANA2032	30-abr-32	100.00%	106.46	7.36%	7.23%	30-oct-24	8.500%	Sem.	106%	4.89	\$ 400.00	105.52	0.89%
YPF2033 (Clase XVIII)	YPF2033	30-sep-33	100.00%	94.78	8.08%	7.92%	30-sep-24	7.000%	Sem.	95%	5.47	\$ 575.65	91.80	3.25%
YPF 2047	YPF2047	15-dic-47	100.00%	83.02	8.90%	8.71%	15-dic-24	7.000%	Sem.	83%	10.07	\$ 750.00	78.47	5.80%
<b>Utilidades</b>														
Genneia 2027	GNNEIA27	02-sep-27	60.00%	101.51	7.91%	7.76%	02-mar-25	8.750%	Sem.	102%	1.52	\$ 219.67	101.75	-0.24%
<b>Otros</b>														
Telecom 2025	TECO25	06-ago-25	34.00%	100.71	7.74%	7.59%	06-feb-25	8.500%	Sem.	101%	0.81	\$ 112.37	100.52	0.19%
Aeropuertos Argentina 2000	AEROAR27	01-feb-27	41.67%	98.81	8.11%	7.87%	01-nov-24	9.375%	Trim.	99%	1.13	\$ 127.50	98.84	-0.03%
Telecom 2031	TECO31	18-jul-31	100.00%	103.13	8.98%	8.78%	18-ene-25	9.500%	Sem.	103%	4.35	\$ 617.22	100.63	2.48%
Aeropuertos Argentina 2000	AEROAR31	01-ago-31	100.00%	104.39	7.58%	7.37%	01-nov-24	8.500%	Trim.	104%	3.84	\$ 272.95	103.83	0.54%

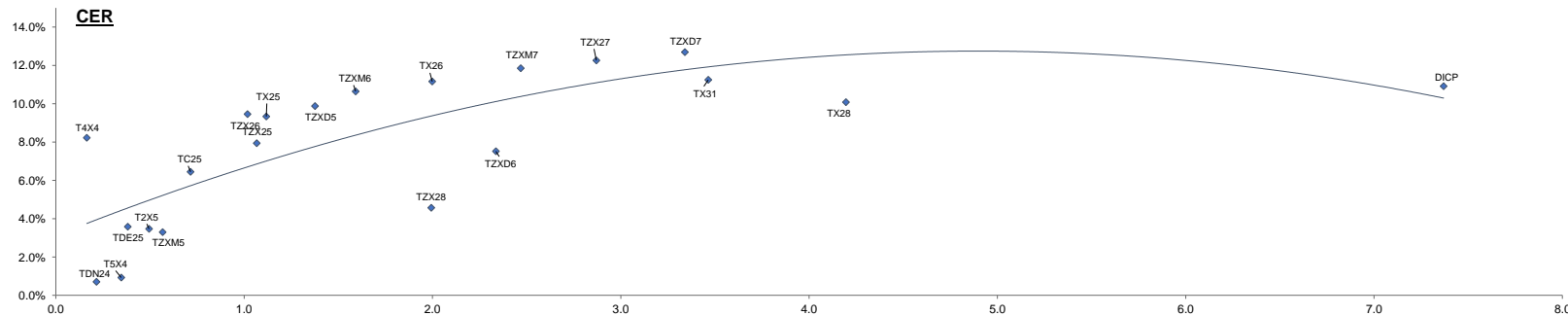
### Corporativos



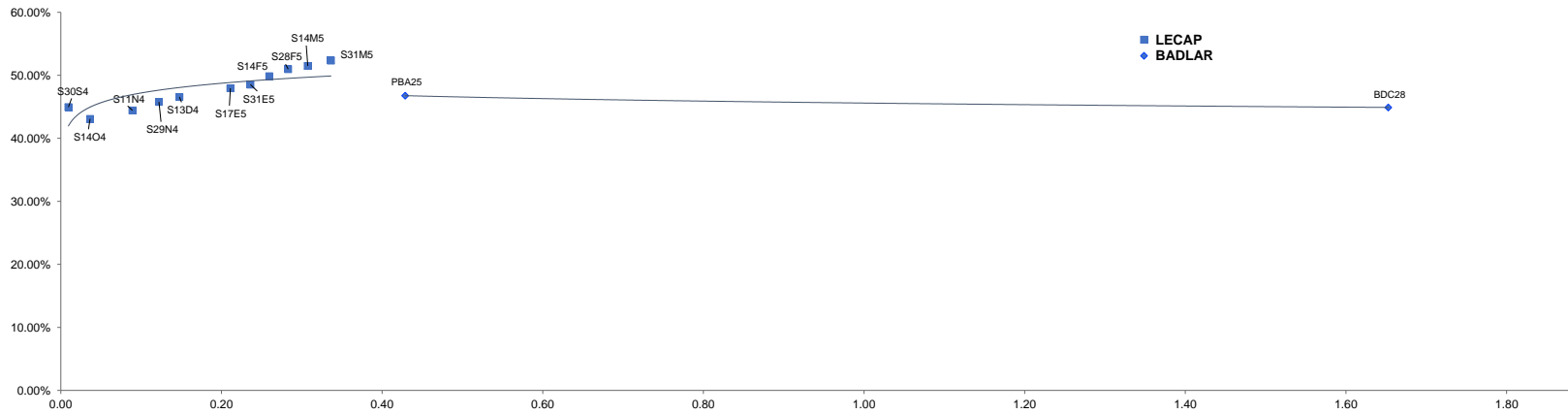
## Fixed Income Research

Bond	Ticker	Maturity	V.R. (%)	Price	TIR	TNA	Next coupon	Cupon	Frec	Parity	M Dur	Outstanding (MM)	30-ago	MoM
<b>Ajustables por CER (*)</b>														
Bono del Tesoro CER 10/2024	T4X4	14-oct-24	100.00%	573.80	67.34%	58.72%	14-oct-24	Fija 4%	Sem.	98%	0.04	\$ 412,969.00	557.50	2.92%
Bono Dual 11/2024	TDN24	29-nov-24	100.00%	115,100.00	8.50%	8.22%	29-nov-24	Fijo 3.25%	Sem.	99%	0.16	\$ 11,085.52	112,000.00	2.77%
Bono del Tesoro CER 12/2024	TSX4	13-dic-24	100.00%	466.30	0.70%	0.70%	13-dic-24	Fija 4.25%	Sem.	101%	0.22	\$ 219,283.00	450.30	3.55%
Bono Dual 01/2025	TDE25	31-ene-25	100.00%	117,030.00	0.93%	0.92%	31-ene-25	Fijo 3.25%	Sem.	101%	0.35	\$ 8,596.00	112,400.00	4.12%
Bono del Tesoro CER 02/2025	T2X5	14-feb-25	100.00%	567.30	3.61%	3.58%	14-feb-25	Fija 4.25%	Sem.	100%	0.38	\$ 2,723,001.00	549.50	3.24%
Bono del Tesoro CER 03/2025	TZXM5	31-mar-25	100.00%	124.40	3.49%	3.46%	25-dic-00	Fijo 0%	Sem.	98%	0.50	\$ 298,559.00	120.50	3.24%
BONCER 2025	TC25	27-abr-25	100.00%	5,152.00	3.32%	3.29%	27-oct-24	Fija 4%	Sem.	100%	0.57	\$ 29,098.00	4,940.00	4.29%
Bono del Tesoro CER 06/2025	TZX25	30-jun-25	100.00%	178.55	6.49%	6.44%	30-jun-25	Fijo 0%	Sem.	95%	0.72	\$ 1,611,109.00	174.90	2.09%
Bono del Tesoro CER 11/2025	TX25	09-nov-25	100.00%	932.60	8.09%	7.94%	09-nov-24	Fija 1.80%	Sem.	94%	1.07	\$ 266,785.00	920.00	1.37%
Bono del Tesoro CER 12/2025	TZXD5	15-dic-25	100.00%	151.50	9.24%	9.33%	15-dic-25	Fijo 0%	-	90%	1.12	\$ 14,501,226.00	150.00	1.00%
Bono del Tesoro CER 03/2026	TZXM6	31-mar-26	100.00%	118.10	9.64%	9.87%	31-mar-26	Fijo 0%	Sem.	87%	1.38	\$ 1,045,260.00	117.00	0.94%
Bono del Tesoro CER 06/2026	TZX26	30-jun-26	100.00%	192.25	10.24%	10.64%	30-jun-26	Fijo 0%	-	84%	1.59	\$ 3,346,252.00	193.25	-0.52%
Bono del Tesoro CER 2026	TX26	09-nov-26	100.00%	1,890.00	9.68%	9.46%	09-nov-24	Fija 2.00%	Sem.	92%	1.02	\$ 335,837.00	1,868.50	1.15%
Bono del Tesoro CER 12/2026	TZXD6	15-dic-26	100.00%	135.25	10.48%	11.16%	15-dic-26	Fijo 0%	-	80%	2.00	\$ 14,390,786.00	136.90	-1.21%
Bono del Tesoro CER 03/2027	TZXM7	31-mar-27	100.00%	106.50	7.13%	7.52%	31-mar-27	Fijo 0%	-	84%	2.34	\$ 343,412.00	99.00	7.58%
Bono del Tesoro CER 06/2027	TZX27	30-jun-27	100.00%	172.00	11.85%	11.85%	30-jun-27	Fijo 0%	-	75%	2.47	\$ 2,547,611.00	178.00	-3.37%
Bono del Tesoro CER 06/2027	TZXD7	15-dic-27	100.00%	121.00	10.88%	12.25%	15-dic-27	Fijo 0%	-	72%	2.87	\$ 11,944,821.00	124.00	-2.42%
Bono del Tesoro CER 12/2028	TZX28	30-jun-28	100.00%	154.50	10.93%	12.69%	30-jun-28	Fijo 0%	-	68%	3.34	\$ 6,677,647.00	159.45	-3.10%
Bono del Tesoro CER 11/2028	TX28	09-nov-28	100.00%	1,567.50	4.62%	4.57%	09-nov-24	Fija 2.25%	Sem.	94%	1.99	\$ 75,905.00	1,590.00	-1.42%
Bono del Tesoro CER 2031	TX31	30-nov-31	100.00%	700.00	10.33%	10.08%	30-nov-24	Fija 2.5%	Sem.	72%	4.20	\$ 45,562.00	690.00	1.45%
Discount \$ Ley Arg.	DICP	31-dic-33	95.00%	31,600.00	11.56%	11.24%	31-dic-24	Fija 5.83%	Sem.	82%	3.46	\$ 9,948.86	33,400.00	-5.39%
PAR \$ Ley Arg.	PARP	31-dic-38	100.00%	15,600.00	11.21%	10.91%	30-sep-24	1.77%	Sem.	50%	7.37	\$ 2,858.00	15,960.00	-2.26%
<b>Tasa Fija</b>														
Letra del Tesoro Capitalizable	S30S4	30-sep-24	100.00%	112.45	56.54%	44.95%	30-sep-24	0.00%	-	53%	0.01	\$ 6,000,000.00	109.45	2.74%
Letra del Tesoro Capitalizable	S14O4	14-oct-24	100.00%	128.97	50.00%	43.08%	14-oct-24	0.00%	-	98%	0.04	\$ 2,132,190.00	125.60	2.68%
Letra del Tesoro Capitalizable	S11N4	11-nov-24	100.00%	103.20	54.03%	44.42%	11-nov-24	0.00%	-	103%	0.09	\$ 1,548,230.00	100.54	2.65%
Letra del Tesoro Capitalizable	S29N4	29-nov-24	100.00%	124.81	55.27%	45.77%	29-nov-24	0.00%	-	55%	0.12	\$ 1,121,471.00	122.30	2.05%
Letra del Tesoro Capitalizable	S13D4	13-dic-24	100.00%	115.22	55.84%	46.56%	13-dic-24	0.00%	-	115%	0.15	\$ 4,129,433.00	112.90	2.05%
Letra del Tesoro Capitalizable	S17E5	17-ene-25	100.00%	114.10	56.32%	47.94%	17-ene-25	0.00%	-	114%	0.21	\$ 1,289,957.00	111.74	2.11%
Letra del Tesoro Capitalizable	S31E5	31-ene-25	100.00%	147.55	56.52%	48.51%	31-ene-25	0.00%	-	118%	0.24	\$ 545,488.00	144.85	1.86%
Letra del Tesoro Capitalizable	S14F5	14-feb-25	100.00%	101.54	57.73%	49.86%	14-feb-25	0.00%	-	102%	0.26	\$ 1,246,301.00	-	-
Letra del Tesoro Capitalizable	S28F5	28-feb-25	100.00%	130.10	58.22%	50.98%	28-feb-25	0.00%	-	82%	0.28	\$ 1,127,251.00	127.90	1.72%
Letra del Tesoro Capitalizable	S14M5	14-mar-25	100.00%	101.60	58.65%	51.49%	14-mar-25	0.00%	-	102%	0.31	\$ 608,909.00	-	-
Letra del Tesoro Capitalizable	S31M5	31-mar-25	100.00%	122.68	59.00%	52.35%	31-mar-25	0.00%	-	50%	0.34	\$ 611,614.00	120.70	1.64%
Letra del Tesoro Capitalizable	S16A5	16-abr-25	100.00%	101.35	59.09%	52.98%	16-abr-25	0.00%	-	101%	0.36	\$ 995,916.00	-	-
Letra del Tesoro Capitalizable	S16Y5	16-may-25	100.00%	101.57	59.55%	54.43%	16-may-25	0.00%	-	102%	0.41	\$ 717,552.00	-	-
Letra del Tesoro Capitalizable	S18J5	18-jun-25	100.00%	105.45	58.77%	54.97%	18-jun-25	0.00%	-	105%	0.47	\$ 1,588,543.21	103.37	2.01%
Letra del Tesoro Capitalizable	S30J5	30-jun-25	100.00%	103.00	58.96%	55.59%	30-jun-25	0.00%	-	103%	0.49	\$ 917,336.00	100.55	2.44%
Letra del Tesoro Capitalizable	S29G5	29-ago-25	100.00%	102.75	58.82%	57.75%	29-ago-25	0.00%	-	103%	0.59	\$ 1,063,900.00	100.60	2.14%
Letra del Tesoro Capitalizable	S12S5	12-sep-25	100.00%	102.10	58.27%	57.76%	12-sep-25	0.00%	-	102%	0.61	\$ 828,692.00	-	-
Bote 10/2026	TO26	18-oct-26	100.00%	73.52	44.92%	40.77%	17-oct-24	Fija 15.50%	Sem.	69%	1.35	\$ 96,569.71	71.00	3.55%
<b>Tasa Variable</b>														
Ciudad de Buenos Aires 2028	BDC28	31-ene-25	100.00%	101.75	53.04%	44.90%	22-nov-24	Badlar + 375pbs	Trim.	98%	1.65	\$ 13,262.47	103.40	-1.60%
Provincia de Buenos Aires 2025	PBA25	12-abr-25	0.00%	107.10	55.63%	46.77%	14-oct-24	Badlar + 375pbs	Trim.	99%	0.43	\$ -	103.00	3.98%
<b>Dollar Linked</b>														
Bote vinculado al Dólar 09/2024	T2V4	30-sep-24	100.00%	96,260.00	64.27%	56.33%	30-sep-24	0.50%	Sem.	99%	0.01	\$ 2,075.00	95,550.00	0.74%
Bono Dual 11/2024	TDN24	29-nov-24	100.00%	115,100.00	-62.45%	-89.89%	29-nov-24	0.00%	-	119%	1.76	\$ 11,085.52	112,000.00	2.77%
Bono Dual 01/2025	TDE25	31-ene-25	100.00%	117,030.00	-42.01%	-49.60%	31-ene-25	0.00%	-	121%	0.70	\$ 8,596.00	112,400.00	4.12%
Bote vinculado al Dólar 03/2025	TV25	30-mar-25	100.00%	97,300.00	-0.29%	-0.29%	30-sep-24	0.50%	Sem.	100%	0.51	\$ 329.00	103,350.00	-5.85%
Bono del Tesoro vinculado al Dólar 06/2025	TZV25	30-jun-25	100.00%	96,500.00	0.14%	0.24%	30-jun-25	0.00%	-	100%	0.76	\$ 1,763.00	100,540.00	-4.02%
Bono del Tesoro vinculado al Dólar 12/2025	TZVD5	15-dic-25	100.00%	100,000.00	-2.73%	-2.72%	30-jun-25	0.00%	-	103%	1.24	\$ 324.00	103,500.00	-3.38%
Bono del Tesoro vinculado al Dólar 06/2026	TZV26	30-jun-26	100.00%	91,100.00	3.43%	3.47%	30-jun-26	0.00%	-	94%	1.76	\$ 383.00	88,500.00	2.94%

Dólar	966.750
LeFi	40.00%
Badlar Priv.	39.925%
CER	465.487
Libor	4.93%



**Curva Pesos**



**DISCLAIMER**

Este informe ha sido elaborado a título informativo. El presente NO debe ser tomado como una recomendación o instrucción, y no reviste carácter de ofertas de productos y/o servicios ni solicitud de orden de compra y/o venta. Banco CMF S.A. no será responsable por ningún error y/u omisión del contenido.