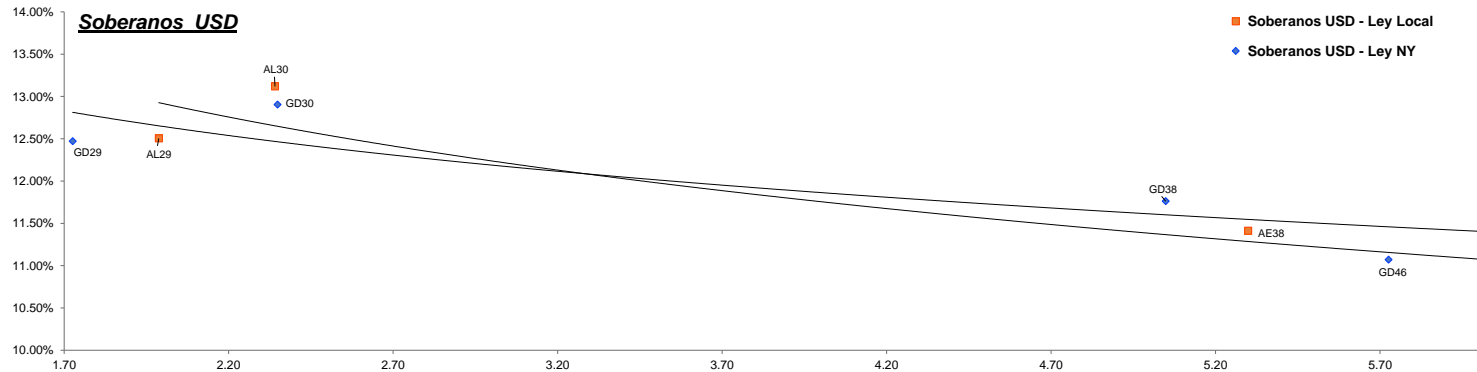


Fixed Income Research

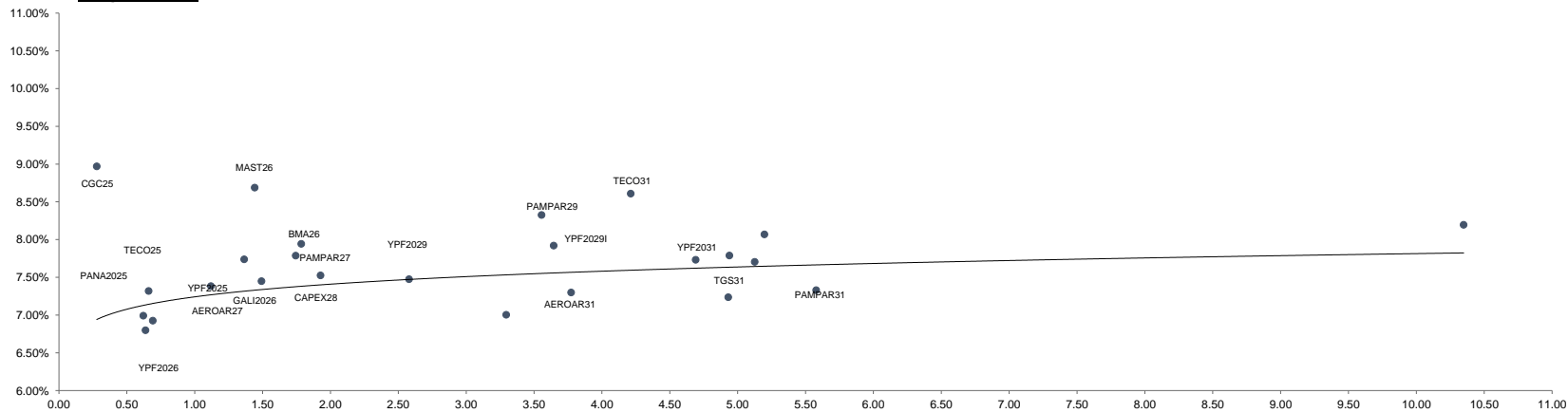
Bond	Ticker	Maturity	V.R. (%)	Price	TIR	TNA	Next coupon	Cupon	Frec	Parity	M Dur	Outstanding (MM)	31-oct	MoM
Soberanos USD														
Bonos Intern. 2029 Ley N.Y. - Step up	GD29	09-jul-29	100.00%	78.02	12.86%	12.47%	09-ene-25	1.000%	Sem.	78%	1.73	\$ 2,635.03	71.84	8.60%
Bonos Intern. 2030 Ley N.Y. - Step up	GD30	09-jul-30	96.00%	73.58	13.32%	12.90%	09-ene-25	0.750%	Sem.	74%	2.35	\$ 15,446.99	67.34	9.27%
Bonos Intern. 2035 Ley N.Y. - Step up	GD35	09-jul-35	100.00%	63.42	11.91%	11.58%	09-ene-25	4.125%	Sem.	64%	6.01	\$ 20,501.72	55.40	14.48%
Bonos Intern. 2038 Ley N.Y. - Step up	GD38	09-ene-38	100.00%	67.36	12.11%	11.76%	09-ene-25	5.000%	Sem.	68%	5.05	\$ 11,405.07	59.89	12.47%
Bonos Intern. 2041 Ley N.Y. - Step up	GD41	09-jul-41	100.00%	59.43	11.63%	11.31%	09-ene-25	3.500%	Sem.	60%	6.27	\$ 10,482.11	51.49	15.42%
Bonos Intern. 2046 Ley N.Y. - Step up	GD46	09-jul-46	100.00%	64.14	11.38%	11.07%	09-ene-25	4.125%	Sem.	65%	5.73	\$ 2,092.00	57.43	11.68%
BONAR 2029 - step up (BYMA)	AL29	09-jul-29	100.00%	77.97	12.89%	12.50%	09-ene-25	1.000%	Sem.	78%	1.99	\$ 1,394.90	69.59	12.04%
BONAR 2030 - step up (BYMA)	AL30	09-jul-30	96.00%	73.21	13.55%	13.12%	09-ene-25	0.750%	Sem.	73%	2.34	\$ 13,038.05	62.93	16.34%
BONAR 2035 - step up (BYMA)	AL35	09-jul-35	100.00%	65.73	11.31%	11.01%	09-ene-25	4.125%	Sem.	66%	6.14	\$ 10,151.85	56.54	16.25%
BONAR 2038 - step up (BYMA)	AE38	09-ene-38	100.00%	68.65	11.74%	11.41%	09-ene-25	5.000%	Sem.	69%	5.30	\$ 7,231.45	56.54	21.42%
BONAR 2041 - step up (BYMA)	AL41	09-jul-41	100.00%	61.51	11.08%	10.79%	09-ene-25	3.500%	Sem.	62%	6.55	\$ 1,542.23	52.01	18.27%
Soberanos Euros														
Bonos Intern. 2029 Euros - Step up	GE29	09-jul-29	100.00%	74.10	14.98%	14.98%	09-ene-25	0.500%	Sem.	74%	1.69	\$ 90.39	68.50	8.18%
Bonos Intern. 2030 Euros - Step up	GE30	09-jul-30	96.00%	70.41	14.13%	14.13%	09-ene-25	0.125%	Sem.	70%	2.10	\$ 1,118.97	64.33	9.45%
Bonos Intern. 2035 Euros - Step up	GE35	09-jul-35	100.00%	58.22	12.43%	12.43%	09-ene-25	3.875%	Sem.	59%	6.05	\$ 298.80	50.32	15.70%
Bonos Intern. 2038 Euros - Step up	GE38	09-ene-38	100.00%	61.96	12.66%	12.66%	09-ene-25	4.250%	Sem.	63%	5.09	\$ 809.34	54.71	13.25%
Bonos Intern. 2041 Euros - Step up	GE41	09-jul-41	100.00%	54.92	12.19%	12.19%	09-ene-25	3.000%	Sem.	55%	6.30	\$ 1,572.60	47.60	15.38%
Bonos Intern. 2046 Euros - Step up	GE46	09-jul-46	100.00%	58.05	12.33%	12.33%	09-ene-25	3.750%	Sem.	59%	5.59	\$ 248.13	51.78	12.11%
Banco Central USD														
BOPREAL Serie 1A	BPOA7	30-abr-25	100.00%	93.06	23.90%	22.62%	30-abr-25	5.000%	Sem.	93%	0.36	\$ 996.00	93.93	-0.93%
BOPREAL Serie 2	BPJ25	30-jun-25	66.67%	65.89	4.00%	4.00%	30-nov-24	0.000%	Mens.	99%	0.41	\$ 1,833.40	65.66	0.35%
BOPREAL Serie 1B	BPOB7	30-abr-26	100.00%	89.19	14.00%	13.54%	30-abr-25	5.000%	Sem.	89%	1.23	\$ 996.00	89.32	-0.15%
BOPREAL Serie 3	BPY26	31-may-26	100.00%	90.89	11.18%	10.88%	30-nov-24	3.000%	Sem.	91%	1.18	\$ 892.00	88.69	2.48%
BOPREAL Serie 1C	BPOC7	30-abr-27	100.00%	84.26	13.12%	12.72%	30-abr-25	5.000%	Sem.	84%	2.04	\$ 1,494.00	84.69	-0.51%
BOPREAL Serie 1D	BPOD7	31-oct-27	100.00%	84.11	12.48%	12.11%	30-abr-25	5.000%	Sem.	84%	2.25	\$ 1,494.00	83.73	0.45%
Provinciales														
Buenos Aires 2037A	BA37D	01-sep-37	96.34%	65.00	16.85%	16.19%	01-mar-25	6.625%	Sem.	64%	4.04	\$ 5,973.08	58.08	11.91%
Buenos Aires 2037B	BB37D	01-sep-37	100.00%	56.88	16.00%	15.41%	01-mar-25	5.875%	Sem.	56%	5.43	\$ 770.00	51.33	10.81%
Buenos Aires 2037C	BC37D	01-sep-37	100.00%	46.66	18.91%	18.09%	01-mar-25	5.250%	Sem.	46%	5.22	\$ 150.00	42.57	9.61%
Ciudad de Bs. As. 2027	CABA27	01-jun-27	100.00%	103.44	5.13%	5.06%	01-dic-24	7.500%	Sem.	103%	1.38	\$ 890.00	102.95	0.48%
Cordoba 2025	PDCAR25	10-dic-25	50.00%	98.00	10.96%	10.67%	10-dic-24	3.000%	Sem.	98%	0.49	\$ 339.50	97.70	0.31%
Cordoba 2027	PDCAR27	01-jun-27	100.00%	93.64	11.34%	11.03%	01-dic-24	3.000%	Sem.	94%	1.53	\$ 494.00	93.52	0.13%
Cordoba 2029	PDCAR29	01-feb-29	100.00%	91.65	10.01%	9.78%	01-feb-25	3.000%	Sem.	92%	2.88	\$ 433.00	88.47	3.59%
Ciudad de Córdoba 2027	COROA27	29-sep-27	75.00%	86.00	18.57%	17.78%	29-mar-25	Step-up	Sem.	86%	1.31	\$ 421.50	79.48	8.20%
Mendoza 2029	PMM29	19-mar-29	69.23%	91.22	10.48%	10.22%	19-mar-25	2.750%	Sem.	91%	1.97	\$ 389.08	91.08	0.15%
Chubut 2030	CHUBT30	26-jul-30	60.33%	96.11	10.31%	9.94%	27-ene-25	7.750%	Trim.	96%	0.46	\$ 392.17	95.67	0.46%
Neuquen 2030 (No Garant)	NEU30A	27-abr-30	84.62%	94.26	9.44%	9.23%	27-abr-25	2.500%	Sem.	94%	2.45	\$ 309.69	93.19	1.15%
Neuquen 2030 (Garant)	NEU30M	12-may-30	67.77%	102.67	7.76%	7.54%	12-feb-25	5.170%	Sem.	103%	2.44	\$ 243.63	102.68	-0.01%
Santa Fe 2027	SFE27	01-nov-27	100.00%	94.87	10.15%	9.91%	01-may-25	6.900%	Sem.	95%	1.72	\$ 250.00	94.49	0.40%
Rio Negro 2028	PRN28	10-mar-28	77.78%	83.69	19.23%	18.39%	10-mar-25	2.750%	Sem.	84%	1.43	\$ 175.00	85.41	-2.01%
Tierra del fuego 2027	FUE27	17-abr-27	37.00%	97.47	11.48%	11.02%	17-ene-25	8.950%	Trim.	97%	1.21	\$ 75.90	97.79	-0.33%



Fixed Income Research

Bond	Ticker	Maturity	V.R. (%)	Price	TIR	TNA	Next coupon	Cupon	Frec	Parity	M Dur	Outstanding (MM)	31-oct	MoM
Corporativos														
Alimentos y bebidas														
Cresud 2026	CRESUD26	03-mar-26	100.00%	103.44	5.25%	5.18%	03-ene-25	8.000%	Sem.	103%	1.17	\$ 70.57	103.30	0.14%
Mastellone 2026	MAST26	30-jun-26	100.00%	103.75	8.69%	8.42%	30-dic-24	10.950%	Trim.	104%	1.44	\$ 110.87	104.27	-0.50%
Arcor 2027	ARCOR27	09-oct-27	85.72%	103.77	5.83%	5.75%	09-abr-25	8.250%	Sem.	104%	1.49	\$ 109.67	103.55	0.21%
Bancos														
Galicia 2026	GALI2026	19-jul-26	100.00%	100.92	7.45%	7.32%	20-ene-25	8.250%	Sem.	101%	1.49	\$ 250.00	101.03	-0.11%
Banco Macro 2026	BMA26	04-nov-26	100.00%	97.95	7.94%	7.79%	04-may-25	6.750%	Sem.	98%	1.79	\$ 400.00	97.01	0.97%
Galicia 2028	GALI2028	10-oct-28	100.00%	102.86	7.00%	6.89%	10-abr-25	7.750%	Sem.	103%	3.29	\$ 325.00	101.41	1.43%
Petróleo y Gas														
Cia Gral de Combustible 2025	CGC25	08-mar-25	33.50%	100.19	8.97%	8.78%	08-mar-25	9.500%	Sem.	100%	0.28	\$ 68.44	100.53	-0.34%
Panamerican Energy 2025	PANA2025	21-jul-25	100.00%	100.21	6.99%	6.87%	21-ene-25	7.250%	Sem.	100%	0.62	\$ 105.15	100.28	-0.07%
Panamerican Energy 2027	PANA2027	30-abr-27	100.00%	104.60	5.79%	5.71%	30-abr-25	9.125%	Sem.	105%	1.33	\$ 300.00	104.99	-0.37%
Pampa Energia 2027	PAMPAR27	24-ene-27	100.00%	100.14	7.53%	7.39%	24-ene-25	7.500%	Sem.	100%	1.93	\$ 750.00	100.07	0.07%
Capex 2028	CAPEX28	25-ago-28	100.00%	102.80	7.79%	7.64%	25-feb-25	9.250%	Sem.	103%	1.74	\$ 188.80	103.62	-0.79%
Pampa Energia 2029	PAMPAR29	15-abr-29	100.00%	103.47	8.33%	8.16%	15-abr-25	9.125%	Sem.	103%	3.56	\$ 300.00	103.55	-0.08%
YPF 2025	YPF2025	28-jul-25	100.00%	101.13	6.80%	6.69%	28-ene-25	8.500%	Sem.	101%	0.64	\$ 1,131.77	100.53	0.60%
YPF2026 (Clase XVI)	YPF2026	12-feb-26	38.46%	101.56	6.93%	6.75%	12-feb-25	4.000%	Trim.	102%	0.69	\$ 298.20	100.80	0.75%
YPF2029 (Clase XVII)	YPF2029	30-jun-29	100.00%	104.41	7.47%	7.34%	30-dic-24	9.000%	Sem.	104%	2.58	\$ 747.00	103.33	1.05%
YPF2029 (Clase I)	YPF2029I	27-jun-29	100.00%	102.70	7.92%	7.77%	27-dic-24	8.500%	Sem.	103%	3.64	\$ 500.00	101.78	0.90%
Transportadora Gas del Sur 2031	TGS31	24-jul-31	100.00%	104.33	7.79%	7.64%	24-ene-25	8.500%	Sem.	104%	4.94	\$ 490.00	103.89	0.42%
Pampa Energia 2031	PAMPAR31	10-sep-31	100.00%	101.98	7.71%	7.56%	10-mar-25	7.950%	Sem.	102%	5.13	\$ 410.00	100.45	1.52%
YPF 2031	YPF2031	10-sep-31	100.00%	105.59	7.73%	7.59%	11-mar-25	8.750%	Sem.	105%	4.69	\$ 500.00	102.40	3.12%
Panamerican Energy 2032	PANA2032	30-abr-32	100.00%	107.01	7.24%	7.11%	30-abr-25	8.500%	Sem.	107%	4.93	\$ 400.00	105.69	1.25%
YPF Luz 2032	YPFL2032	16-oct-32	100.00%	99.75	8.07%	7.91%	16-abr-25	7.875%	Sem.	100%	5.20	\$ 420.00	98.42	1.35%
YPF2033 (Clase XVIII)	YPF2033	30-sep-33	100.00%	98.83	7.33%	7.20%	30-mar-25	7.000%	Sem.	99%	5.58	\$ 575.65	96.77	2.13%
YPF 2047	YPF2047	15-dic-47	100.00%	89.12	8.20%	8.03%	15-dic-24	7.000%	Sem.	89%	10.35	\$ 750.00	84.08	5.99%
Utilidades														
Geneia 2027	GNNEIA27	02-sep-27	60.00%	101.58	7.74%	7.59%	02-mar-25	8.750%	Sem.	102%	1.36	\$ 219.67	101.19	0.39%
Otros														
Telecom 2025	TECO25	06-ago-25	34.00%	100.83	7.32%	7.19%	06-feb-25	8.500%	Sem.	101%	0.66	\$ 112.37	100.73	0.10%
Aeropuertos Argentina 2000	AEROAR27	01-feb-27	37.50%	99.62	7.38%	7.19%	03-feb-25	9.375%	Trim.	100%	1.12	\$ 114.75	99.65	-0.03%
Telecom 2031	TECO31	18-jul-31	100.00%	104.62	8.61%	8.43%	18-ene-25	9.500%	Sem.	104%	4.21	\$ 617.22	103.56	1.02%
Aeropuertos Argentina 2000	AEROAR31	01-ago-31	100.00%	105.35	7.30%	7.11%	01-feb-25	8.500%	Trim.	105%	3.77	\$ 272.95	104.49	0.82%

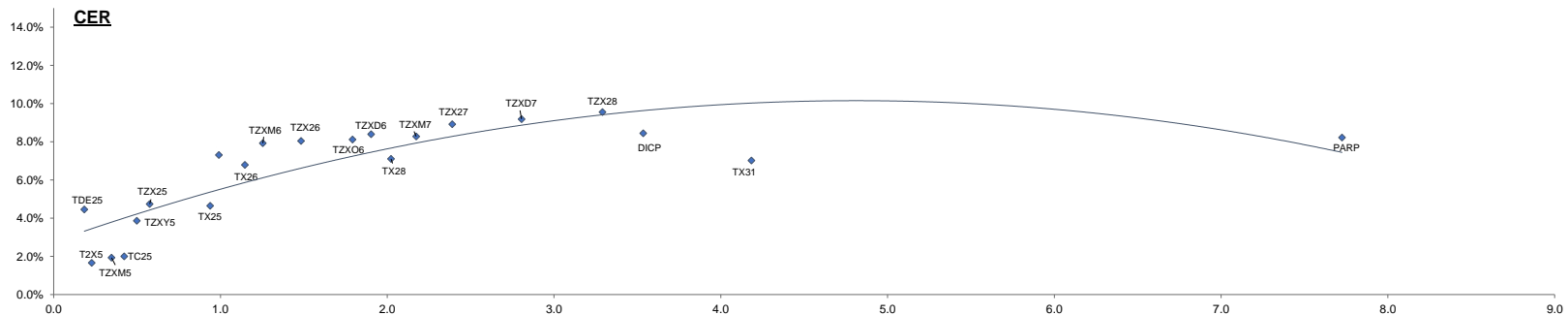
Corporativos



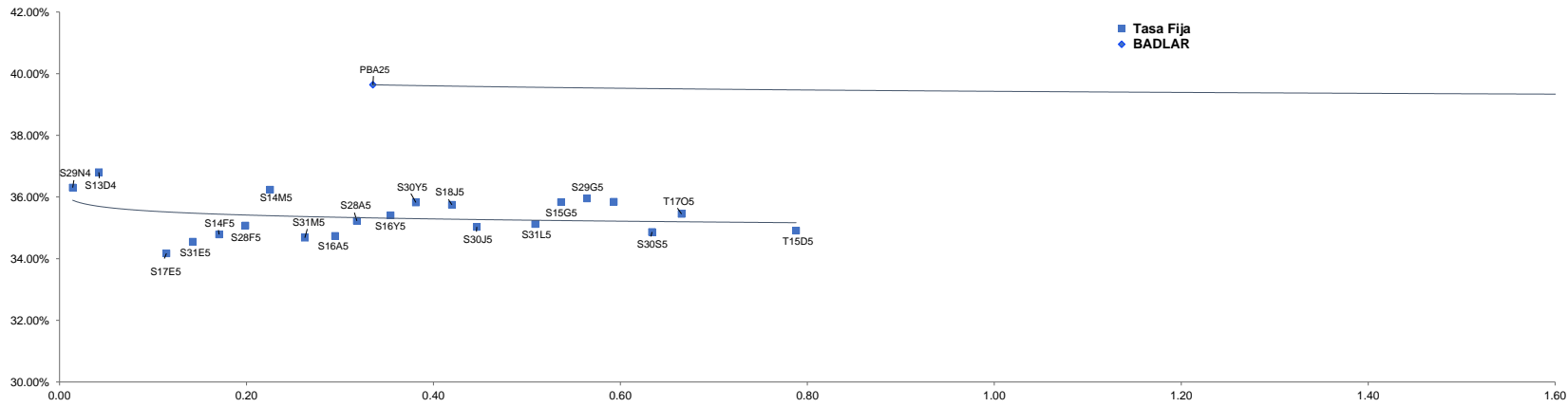
Fixed Income Research

Dólar Priv. 1004.750
CER 36.188%
SOFR 4.56%

Bond														
Ajustables por CER	Ticker	Maturity	V.R. (%)	Price	TIR	TNA	Next coupon	Cupon	Frec	Parity	M Dur	Outstanding (MM)	31-oct	MoM
Bono del Tesoro CER 12/2024	T5X4	13-dic-24	100.00%	502.10	43.00%	39.16%	13-dic-24	Fija 4.25%	Sem.	98%	0.05	\$ 219,283.00	489.25	2.63%
Bono Dual 01/2025	TDE25	31-ene-25	100.00%	125,070.00	4.54%	4.46%	31-ene-25	Fija 3.25%	Sem.	100%	0.18	\$ 8,596.00	122,000.00	2.52%
Bono del Tesoro CER 02/2025	T2X5	14-feb-25	100.00%	615.60	1.67%	1.66%	14-feb-25	Fija 4.25%	Sem.	101%	0.23	\$ 2,723,001.00	591.00	4.16%
Bono del Tesoro CER 03/2025	TZXM5	31-mar-25	100.00%	135.10	1.94%	1.93%	31-mar-25	Fijo 0%	Sem.	99%	0.35	\$ 298,559.00	128.10	5.46%
BONCER 2025	TC25	27-abr-25	100.00%	5,485.00	2.01%	2.00%	27-abr-25	Fija 4%	Sem.	101%	0.42	\$ 29,098.00	5,210.00	5.28%
Bono del Tesoro CER 05/2025	TZXY5	30-may-25	100.00%	100.35	3.90%	3.86%	30-may-25	Fijo 0%	Sem.	98%	0.50	\$ 365,935.00	94.40	6.30%
Bono del Tesoro CER 06/2025	TZX25	30-jun-25	100.00%	195.65	4.78%	4.74%	30-jun-25	Fijo 0%	Sem.	97%	0.58	\$ 1,611,109.00	184.40	6.10%
Bono del Tesoro CER 11/2025	TX25	09-nov-25	100.00%	1,036.00	4.71%	4.65%	09-may-25	Fija 1.80%	Sem.	97%	0.94	\$ 266,785.00	974.00	6.37%
Bono del Tesoro CER 12/2025	TZXD5	15-dic-25	100.00%	168.25	7.29%	7.31%	15-dic-25	Fijo 0%	-	93%	0.99	\$ 7,593,347.00	157.00	7.17%
Bono del Tesoro CER 03/2026	TZXM6	31-mar-26	100.00%	131.70	7.82%	7.92%	31-mar-26	Fijo 0%	Sem.	90%	1.25	\$ 1,173,279.00	122.75	7.29%
Bono del Tesoro CER 06/2026	TZX26	30-jun-26	100.00%	217.25	7.86%	8.04%	30-jun-26	Fijo 0%	-	89%	1.48	\$ 3,346,252.00	202.00	7.55%
Bono del Tesoro CER 10/2026	TZXO6	30-jun-26	100.00%	88.45	7.83%	8.12%	30-oct-26	Fijo 0%	-	86%	1.79	\$ 430,947.00	80.00	10.56%
Bono del Tesoro CER 2026	TX26	09-nov-26	80.00%	1,650.50	6.90%	6.79%	09-may-25	Fija 2.00%	Sem.	95%	1.15	\$ 268,669.60	1,972.00	-16.30%
Bono del Tesoro CER 12/2026	TZXD6	15-dic-26	100.00%	154.55	8.00%	8.40%	15-dic-26	Fijo 0%	-	85%	1.90	\$ 14,424,781.00	142.50	8.46%
Bono del Tesoro CER 03/2027	TZXM7	31-mar-27	100.00%	113.85	7.85%	8.28%	31-mar-27	Fijo 0%	-	84%	2.17	\$ 354,291.00	107.00	6.40%
Bono del Tesoro CER 06/2027	TZX27	30-jun-27	100.00%	199.05	8.35%	8.92%	30-jun-27	Fijo 0%	-	81%	2.39	\$ 2,547,611.00	183.00	8.77%
Bono del Tesoro CER 06/2027	TZXD7	15-dic-27	100.00%	141.50	8.43%	9.19%	15-dic-27	Fijo 0%	-	78%	2.81	\$ 11,944,821.00	130.50	8.43%
Bono del Tesoro CER 12/2028	TZX28	30-jun-28	100.00%	182.40	8.56%	9.56%	30-jun-28	Fijo 0%	-	74%	3.29	\$ 6,677,647.00	168.25	8.41%
Bono del Tesoro CER 11/2028	TX28	09-nov-28	80.00%	1,578.00	7.23%	7.11%	09-may-25	Fija 2.25%	-	113%	2.02	\$ 53,137.05	1,684.50	-6.32%
Bono del Tesoro CER 2031	TX31	30-nov-31	100.00%	866.40	7.14%	7.02%	30-nov-24	Fija 2.5%	Sem.	82%	4.18	\$ 45,562.00	775.00	11.79%
Discount \$ Ley Arg.	DICP	31-dic-33	95.00%	37,990.00	8.62%	8.45%	31-dic-24	Fija 5.83%	Sem.	91%	3.53	\$ 9,948.86	35,825.00	6.04%
PAR \$ Ley Arg.	PARP	31-dic-38	100.00%	20,500.00	8.39%	8.22%	31-mar-25	1.77%	Sem.	61%	7.72	\$ 2,858.00	17,920.00	14.40%
Tasa Fija	Ticker	Maturity	V.R. (%)	Price	TIR	TNA	Next coupon	Cupon	TEM	Parity	M Dur	Outstanding (MM)	31-oct	MoM
Letra del Tesoro Capitalizable	S29N4	29-nov-24	100.00%	134.05	43.59%	36.30%	29-nov-24	0.00%	3.02%	59%	0.01	\$ 1,121,471.00	130.95	2.37%
Letra del Tesoro Capitalizable	S13D4	13-dic-24	100.00%	124.20	43.93%	36.80%	13-dic-24	0.00%	3.04%	124%	0.04	\$ 4,129,433.00	121.18	2.49%
Letra del Tesoro Capitalizable	S17E5	17-ene-25	100.00%	124.65	39.52%	34.17%	17-ene-25	0.00%	2.78%	125%	0.11	\$ 1,289,957.00	120.90	3.10%
Letra del Tesoro Capitalizable	S31E5	31-ene-25	100.00%	161.93	39.73%	34.55%	31-ene-25	0.00%	2.79%	143%	0.14	\$ 2,057,497.00	156.70	3.33%
Letra del Tesoro Capitalizable	S14F5	14-feb-25	100.00%	112.25	39.74%	34.79%	14-feb-25	0.00%	2.79%	112%	0.17	\$ 1,422,200.00	108.55	3.41%
Letra del Tesoro Capitalizable	S28F5	28-feb-25	100.00%	144.75	39.51%	35.07%	28-feb-25	0.00%	2.77%	91%	0.20	\$ 1,127,251.00	139.62	3.67%
Letra del Tesoro Capitalizable	S14M5	14-mar-25	100.00%	113.36	41.00%	36.24%	14-mar-25	0.00%	2.86%	113%	0.23	\$ 800,646.00	110.00	3.05%
Letra del Tesoro Capitalizable	S31M5	31-mar-25	100.00%	138.60	38.70%	34.68%	31-mar-25	0.00%	2.73%	56%	0.26	\$ 611,614.00	132.55	4.56%
Letra del Tesoro Capitalizable	S16A5	16-abr-25	100.00%	115.30	38.46%	34.74%	16-abr-25	0.00%	2.71%	115%	0.29	\$ 995,916.00	110.60	4.25%
Letra del Tesoro Capitalizable	S28A5	28-abr-25	100.00%	113.60	38.82%	35.23%	28-abr-25	0.00%	2.73%	114%	0.32	\$ 989,880.00	108.60	4.60%
Letra del Tesoro Capitalizable	S16Y5	16-may-25	100.00%	117.00	38.68%	35.40%	16-may-25	0.00%	2.72%	117%	0.35	\$ 717,552.00	111.90	4.56%
Letra del Tesoro Capitalizable	S30Y5	30-may-25	100.00%	115.00	38.90%	35.82%	30-may-25	0.00%	2.74%	115%	0.38	\$ 313,776.00	109.60	4.93%
Letra del Tesoro Capitalizable	S18J5	18-jun-25	100.00%	122.70	38.45%	35.75%	18-jun-25	0.00%	2.71%	123%	0.42	\$ 1,588,543.21	116.35	5.46%
Letra del Tesoro Capitalizable	S30J5	30-jun-25	100.00%	121.05	37.41%	35.03%	30-jun-25	0.00%	2.65%	121%	0.45	\$ 917,336.00	114.11	6.08%
Letra del Tesoro Capitalizable	S31L5	31-jul-25	100.00%	119.00	36.97%	35.12%	31-jul-25	0.00%	2.62%	119%	0.51	\$ 332,567.00	112.00	6.25%
Letra del Tesoro Capitalizable	S15G5	15-ago-25	100.00%	116.40	37.49%	35.83%	15-ago-25	0.00%	2.65%	116%	0.54	\$ 746,933.00	109.34	6.46%
Letra del Tesoro Capitalizable	S29G5	29-ago-25	100.00%	123.61	37.37%	35.95%	29-ago-25	0.00%	2.64%	124%	0.56	\$ 1,063,900.00	116.30	6.29%
Letra del Tesoro Capitalizable	S12S5	12-sep-25	100.00%	123.36	37.01%	35.84%	12-sep-25	0.00%	2.62%	123%	0.59	\$ 828,692.00	115.70	6.62%
Letra del Tesoro Capitalizable	S30S5	30-sep-25	100.00%	123.06	35.68%	34.86%	30-sep-25	0.00%	2.54%	123%	0.63	\$ 457,562.00	114.97	7.04%
Bono del Tesoro Capitalizable	T17O5	17-oct-25	100.00%	120.40	36.02%	35.45%	17-oct-25	0.00%	2.56%	120%	0.67	\$ 674,297.00	112.30	7.21%
Letra del Tesoro Capitalizable	T15D5	15-dic-25	100.00%	124.60	34.57%	34.91%	15-dic-25	0.00%	2.47%	125%	0.79	\$ 1,084,427.00	114.25	9.06%
Bote 10/2026	TO26	18-oct-26	100.00%	83.25	30.51%	28.48%	17-abr-25	Fija 15.50%	2.21%	82%	1.46	\$ 96,569.71	74.40	11.90%
Tasa Variable	Ticker	Maturity	V.R. (%)	Price	TIR	TNA	Next coupon	Cupon	Frec	Parity	M Dur	Outstanding (MM)	31-oct	MoM
Ciudad de Buenos Aires 2028	BDC28	31-ene-25	100.00%	101.10	45.50%	39.32%	24-feb-25	Badlar + 375pbs	Trim.	101%	1.79	\$ 13,262.47	110.80	-8.75%
Provincia de Buenos Aires 2025	PBA25	12-abr-25	0.00%	104.60	45.93%	39.64%	13-ene-25	Badlar + 375pbs	Trim.	100%	0.34	\$ -	102.60	1.95%
Dólar Linked	Ticker	Maturity	V.R. (%)	Price	TIR	TNA	Next coupon	Cupon	Frec	Parity	M Dur	Outstanding (MM)	31-oct	MoM
Bono Dual 01/2025	TDE25	31-ene-25	100.00%	125,070.00	-68.07%	-102.54%	31-ene-25	0.00%	-	124%	-7.55	\$ 8,596.00	122,000.00	2.52%
Bote vinculado al Dólar 03/2025	TV25	30-mar-25	100.00%	97,750.00	8.93%	8.74%	30-mar-25	0.50%	Sem.	97%	0.34	\$ 329.00	97,880.00	-0.13%
Bono del Tesoro vinculado al Dólar 06/2025	TZV25	30-jun-25	100.00%	98,200.00	1.73%	3.84%	30-jun-25	0.00%	-	98%	0.61	\$ 1,763.00	95,100.00	3.26%
Bono del Tesoro vinculado al Dólar 12/2025	TZVD5	15-dic-25	100.00%	100,440.00	0.03%	0.03%	30-jun-25	0.00%	-	100%	1.08	\$ 324.00	92,000.00	9.17%
Bono del Tesoro vinculado al Dólar 06/2026	TZV26	30-jun-26	100.00%	90,479.25	6.76%	6.89%	30-jun-26	0.00%	-	90%	1.60	\$ 383.00	86,000.00	5.21%



Curva Pesos



DISCLAIMER

Este informe ha sido elaborado a título informativo. El presente NO debe ser tomado como una recomendación o instrucción, y no reviste carácter de ofertas de productos y/o servicios ni solicitud de orden de compra y/o venta. Banco CMF S.A. no será responsable por ningún error y/u omisión del contenido.