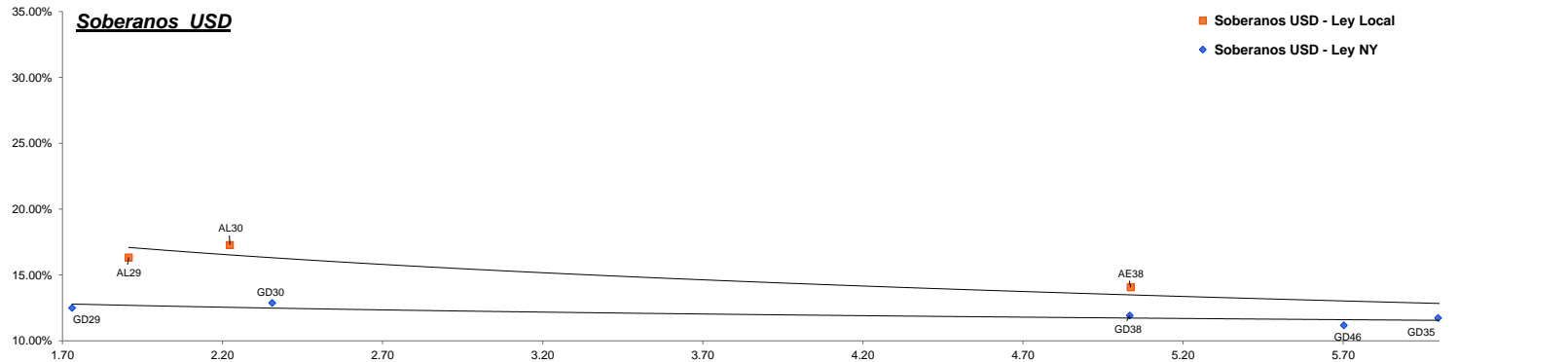


Fixed Income Research

Bond	Ticker	Maturity	V.R. (%)	Price	TIR	TNA	Next coupon	Cupon	Frec	Parity	M Dur	Outstanding (MM)	31-oct	MoM
Soberanos USD														
Bonos Intern. 2029 Ley N.Y. - Step up	GD29	09-jul-29	100.00%	77.94	12.88%	12.49%	09-ene-25	1.000%	Sem.	78%	1.73	\$ 2,635.03	71.84	8.49%
Bonos Intern. 2030 Ley N.Y. - Step up	GD30	09-jul-30	96.00%	73.59	13.29%	12.87%	09-ene-25	0.750%	Sem.	74%	2.36	\$ 15,446.99	67.34	9.28%
Bonos Intern. 2035 Ley N.Y. - Step up	GD35	09-jul-35	100.00%	62.81	12.07%	11.73%	09-ene-25	4.125%	Sem.	63%	6.00	\$ 20,501.72	55.40	13.38%
Bonos Intern. 2038 Ley N.Y. - Step up	GD38	09-ene-38	100.00%	66.78	12.27%	11.92%	09-ene-25	5.000%	Sem.	67%	5.03	\$ 11,405.07	59.89	11.50%
Bonos Intern. 2041 Ley N.Y. - Step up	GD41	09-jul-41	100.00%	58.68	11.83%	11.50%	09-ene-25	3.500%	Sem.	59%	6.24	\$ 10,482.11	51.49	13.96%
Bonos Intern. 2046 Ley N.Y. - Step up	GD46	09-jul-46	100.00%	63.71	11.49%	11.18%	09-ene-25	4.125%	Sem.	64%	5.70	\$ 2,092.00	57.43	10.94%
BONAR 2029 - step up	AL29	09-jul-29	100.00%	73.17	16.33%	16.33%	09-ene-25	1.000%	Sem.	73%	1.91	\$ 1,394.90	69.59	5.14%
BONAR 2030 - step up	AL30	09-jul-30	96.00%	67.56	17.28%	17.28%	09-ene-25	0.750%	Sem.	68%	2.22	\$ 13,038.05	62.93	7.36%
BONAR 2035 - step up	AL35	09-jul-35	100.00%	61.11	12.54%	12.54%	09-ene-25	4.125%	Sem.	62%	6.03	\$ 10,151.85	56.54	8.08%
BONAR 2038 - step up	AE38	09-ene-38	100.00%	61.11	14.06%	14.06%	09-ene-25	5.000%	Sem.	62%	5.04	\$ 7,231.45	56.54	8.08%
BONAR 2041 - step up	AL41	09-jul-41	100.00%	56.84	14.06%	12.34%	09-ene-25	3.500%	Sem.	57%	6.34	\$ 1,542.23	52.01	9.29%
Soberanos Euros														
Bonos Intern. 2029 Euros - Step up	GE29	09-jul-29	100.00%	73.08	15.71%	15.71%	09-ene-25	0.500%	Sem.	73%	1.68	\$ 90.39	68.50	6.69%
Bonos Intern. 2030 Euros - Step up	GE30	09-jul-30	96.00%	69.88	14.44%	14.44%	09-ene-25	0.125%	Sem.	70%	2.09	\$ 1,118.97	64.33	8.63%
Bonos Intern. 2035 Euros - Step up	GE35	09-jul-35	100.00%	56.85	12.83%	12.83%	09-ene-25	3.875%	Sem.	57%	6.01	\$ 298.80	50.32	12.98%
Bonos Intern. 2038 Euros - Step up	GE38	09-ene-38	100.00%	60.90	12.99%	12.99%	09-ene-25	4.250%	Sem.	62%	5.06	\$ 809.34	54.71	11.31%
Bonos Intern. 2041 Euros - Step up	GE41	09-jul-41	100.00%	53.65	12.57%	12.57%	09-ene-25	3.000%	Sem.	54%	6.25	\$ 1,572.60	47.60	12.71%
Bonos Intern. 2046 Euros - Step up	GE46	09-jul-46	100.00%	57.12	12.62%	12.62%	09-ene-25	3.750%	Sem.	58%	5.52	\$ 248.13	51.78	10.31%
Banco Central USD														
BOPREAL Serie 1A	BPOA7	30-abr-25	100.00%	93.11	23.50%	22.26%	30-abr-25	5.000%	Sem.	93%	0.36	\$ 996.00	93.93	-0.87%
BOPREAL Serie 2	BPJ25	30-jun-25	66.67%	65.90	3.88%	3.88%	30-nov-24	0.000%	Mens.	99%	0.41	\$ 1,833.40	65.66	0.37%
BOPREAL Serie 1B	BPOB7	30-abr-26	100.00%	89.39	13.79%	13.34%	30-abr-25	5.000%	Sem.	89%	1.24	\$ 996.00	89.32	0.08%
BOPREAL Serie 3	BPY26	31-may-26	100.00%	91.08	10.96%	10.68%	30-nov-24	3.000%	Sem.	91%	1.18	\$ 892.00	88.69	2.69%
BOPREAL Serie 1C	BPOC7	30-abr-27	100.00%	84.43	13.01%	12.61%	30-abr-25	5.000%	Sem.	84%	2.05	\$ 1,494.00	84.69	-0.31%
BOPREAL Serie 1D	BPOD7	31-oct-27	100.00%	84.10	12.47%	12.10%	30-abr-25	5.000%	Sem.	84%	2.25	\$ 1,494.00	83.73	0.44%
Provinciales														
Buenos Aires 2037A	BA37D	01-sep-37	96.34%	64.64	16.98%	16.31%	01-mar-25	6.625%	Sem.	64%	4.03	\$ 5,973.08	58.08	11.29%
Buenos Aires 2037B	BB37D	01-sep-37	100.00%	56.27	16.20%	15.59%	01-mar-25	5.875%	Sem.	56%	5.41	\$ 770.00	51.33	9.62%
Buenos Aires 2037C	BC37D	01-sep-37	100.00%	46.61	18.91%	18.10%	01-mar-25	5.250%	Sem.	46%	5.22	\$ 150.00	42.57	9.49%
Ciudad de Bs. As. 2027	CABA27	01-jun-27	100.00%	103.24	5.27%	5.21%	01-dic-24	7.500%	Sem.	103%	1.38	\$ 890.00	102.95	0.28%
Cordoba 2025	PDCAR25	10-dic-25	50.00%	98.16	10.58%	10.32%	10-dic-24	3.000%	Sem.	98%	0.50	\$ 339.50	97.70	0.47%
Cordoba 2027	PDCAR27	01-jun-27	100.00%	93.71	11.28%	10.98%	01-dic-24	3.000%	Sem.	94%	1.54	\$ 494.00	93.52	0.20%
Cordoba 2029	PDCAR29	01-feb-29	100.00%	91.00	10.26%	10.01%	01-feb-25	3.000%	Sem.	91%	2.88	\$ 433.00	88.47	2.86%
Ciudad de Córdoba 2027	COROA27	29-sep-27	75.00%	82.75	21.73%	20.66%	29-mar-25	Step-up	Sem.	83%	1.29	\$ 421.50	79.48	4.11%
Mendoza 2029	PMM29	19-mar-29	69.23%	91.26	10.45%	10.19%	19-mar-25	2.750%	Sem.	91%	1.98	\$ 389.08	91.08	0.20%
Chubut 2030	CHUBT30	26-jul-30	60.33%	96.08	10.33%	9.95%	27-ene-25	7.750%	Trim.	96%	0.46	\$ 392.17	95.67	0.43%
Neuquen 2030 (No Garant)	NEU30A	27-abr-30	84.62%	94.17	9.48%	9.26%	27-abr-25	2.500%	Sem.	94%	2.46	\$ 309.69	93.19	1.05%
Neuquen 2030 (Garant)	NEU30M	12-may-30	67.77%	102.62	7.78%	7.56%	12-feb-25	5.170%	Sem.	103%	2.45	\$ 243.63	102.68	-0.06%
Santa Fe 2027	SFE27	01-nov-27	100.00%	94.81	10.18%	9.94%	01-may-25	6.900%	Sem.	95%	1.72	\$ 250.00	94.49	0.34%
Rio Negro 2028	PRN28	10-mar-28	77.78%	83.67	19.21%	18.37%	10-mar-25	2.750%	Sem.	84%	1.44	\$ 175.00	85.41	-2.04%
Tierra del fuego 2027	FUE27	17-abr-27	37.00%	97.68	11.29%	10.84%	17-ene-25	8.950%	Trim.	98%	1.22	\$ 75.90	97.79	-0.11%

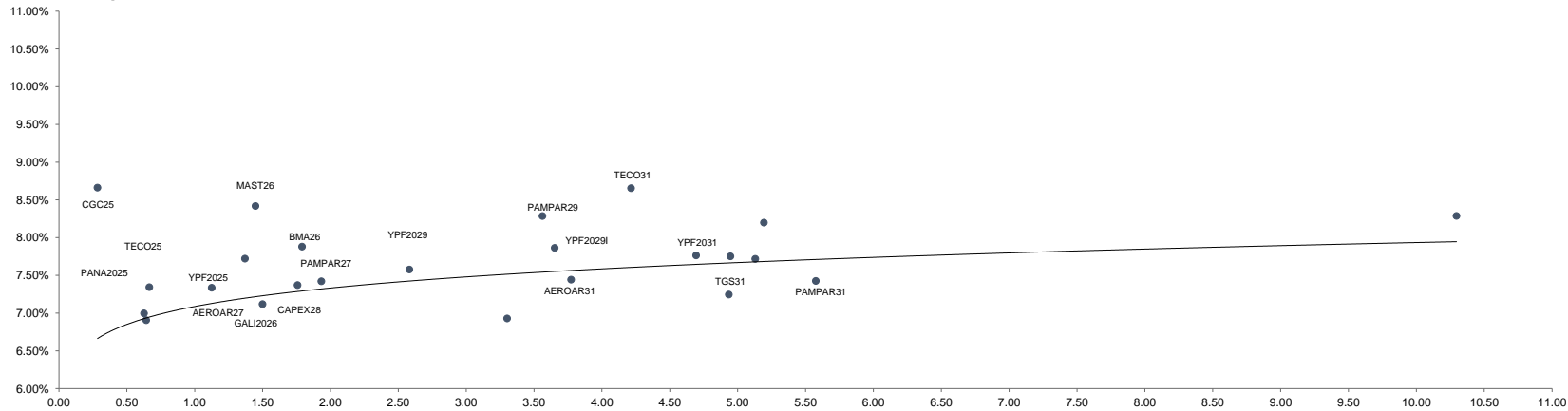
Soberanos USD



Fixed Income Research

Bond	Ticker	Maturity	V.R. (%)	Price	TIR	TNA	Next coupon	Cupon	Frec	Parity	M Dur	Outstanding (MM)	31-oct	MoM
Corporativos														
Alimentos y bebidas														
Cresud 2026	CRESUD26	03-mar-26	100.00%	103.51	5.20%	5.14%	03-ene-25	8.000%	Sem.	103%	1.18	\$ 70.57	103.30	0.20%
Mastellone 2026	MAST26	30-jun-26	100.00%	104.15	8.42%	8.17%	30-dic-24	10.950%	Trim.	104%	1.45	\$ 110.87	104.27	-0.12%
Arcor 2027	ARCOR27	09-oct-27	85.72%	103.78	5.83%	5.75%	09-abr-25	8.250%	Sem.	104%	1.50	\$ 109.67	103.55	0.22%
Bancos														
Galicia 2026	GALI2026	19-jul-26	100.00%	101.42	7.12%	7.00%	20-ene-25	8.250%	Sem.	101%	1.50	\$ 250.00	101.03	0.39%
Banco Macro 2026	BMA26	04-nov-26	100.00%	98.05	7.88%	7.73%	04-may-25	6.750%	Sem.	98%	1.79	\$ 400.00	97.01	1.07%
Galicia 2028	GALI2028	10-oct-28	100.00%	103.11	6.93%	6.81%	10-abr-25	7.750%	Sem.	103%	3.30	\$ 325.00	101.41	1.68%
Petróleo y Gas														
Cia Gral de Combustible 2025	CGC25	08-mar-25	33.50%	100.28	8.66%	8.48%	08-mar-25	9.500%	Sem.	100%	0.28	\$ 68.44	100.53	-0.25%
Panamerican Energy 2025	PANA2025	21-jul-25	100.00%	100.21	7.00%	6.88%	21-ene-25	7.250%	Sem.	100%	0.63	\$ 105.15	100.28	-0.07%
Panamerican Energy 2027	PANA2027	30-abr-27	100.00%	104.55	5.84%	5.75%	30-abr-25	9.125%	Sem.	105%	1.33	\$ 300.00	104.99	-0.42%
Pampa Energia 2027	PAMPAR27	24-ene-27	100.00%	100.34	7.42%	7.29%	24-ene-25	7.500%	Sem.	100%	1.93	\$ 750.00	100.07	0.27%
Capex 2028	CAPEX28	25-ago-28	100.00%	103.55	7.37%	7.24%	25-feb-25	9.250%	Sem.	103%	1.76	\$ 188.80	103.62	-0.07%
Pampa Energia 2029	PAMPAR29	15-abr-29	100.00%	103.62	8.29%	8.12%	15-abr-25	9.125%	Sem.	104%	3.56	\$ 300.00	103.55	0.07%
YPF 2025	YPF2025	28-jul-25	100.00%	101.07	6.91%	6.79%	28-ene-25	8.500%	Sem.	101%	0.64	\$ 1,131.77	100.53	0.54%
YPF2026 (Clase XVI)	YPF2026	12-feb-26	38.46%	102.24	5.95%	5.82%	12-feb-25	4.000%	Trim.	102%	0.70	\$ 298.20	100.80	1.43%
YPF2029 (Clase XVII)	YPF2029	30-jun-29	100.00%	104.14	7.58%	7.44%	30-dic-24	9.000%	Sem.	104%	2.58	\$ 747.00	103.33	0.78%
YPF2029 (Clase I)	YPF2029I	27-jun-29	100.00%	102.91	7.86%	7.72%	27-dic-24	8.500%	Sem.	103%	3.65	\$ 500.00	101.78	1.11%
Transportadora Gas del Sur 2031	TGS31	24-jul-31	100.00%	104.52	7.75%	7.61%	24-ene-25	8.500%	Sem.	104%	4.95	\$ 490.00	103.89	0.61%
Pampa Energia 2031	PAMPAR31	10-sep-31	100.00%	101.91	7.72%	7.58%	10-mar-25	7.950%	Sem.	102%	5.13	\$ 410.00	100.45	1.45%
YPF 2031	YPF2031	10-sep-31	100.00%	105.44	7.76%	7.62%	11-mar-25	8.750%	Sem.	105%	4.69	\$ 500.00	102.40	2.97%
Panamerican Energy 2032	PANA2032	30-abr-32	100.00%	106.97	7.25%	7.12%	30-abr-25	8.500%	Sem.	107%	4.94	\$ 400.00	105.69	1.21%
YPF Luz 2032	YPFL2032	16-oct-32	100.00%	99.10	8.20%	8.04%	16-abr-25	7.875%	Sem.	99%	5.19	\$ 420.00	98.42	0.69%
YPF2033 (Clase XVIII)	YPF2033	30-sep-33	100.00%	98.32	7.43%	7.29%	30-mar-25	7.000%	Sem.	98%	5.58	\$ 575.65	96.77	1.60%
YPF 2047	YPF2047	15-dic-47	100.00%	88.27	8.29%	8.12%	15-dic-24	7.000%	Sem.	89%	10.30	\$ 750.00	84.08	4.98%
Utilidades														
Genneia 2027	GNNEIA27	02-sep-27	60.00%	101.61	7.72%	7.58%	02-mar-25	8.750%	Sem.	102%	1.37	\$ 219.67	101.19	0.42%
Otros														
Telecom 2025	TECO25	06-ago-25	34.00%	100.82	7.34%	7.21%	06-feb-25	8.500%	Sem.	101%	0.67	\$ 112.37	100.73	0.09%
Aeropuertos Argentina 2000	AEROAR27	01-feb-27	37.50%	99.67	7.34%	7.14%	03-feb-25	9.375%	Trim.	100%	1.13	\$ 114.75	99.65	0.02%
Telecom 2031	TECO31	18-jul-31	100.00%	104.43	8.65%	8.47%	18-ene-25	9.500%	Sem.	104%	4.22	\$ 617.22	103.56	0.84%
Aeropuertos Argentina 2000	AEROAR31	01-ago-31	100.00%	104.81	7.44%	7.24%	01-feb-25	8.500%	Trim.	105%	3.77	\$ 272.95	104.49	0.31%

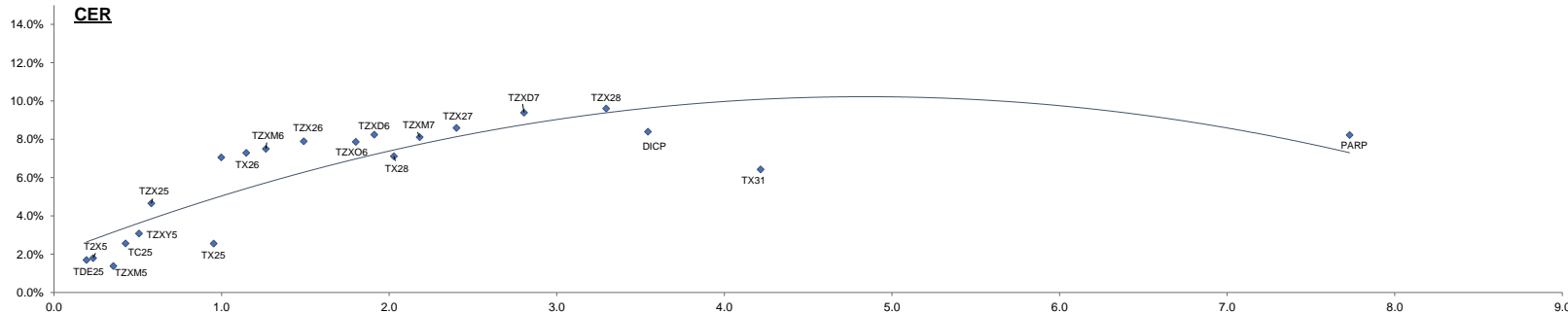
Corporativos



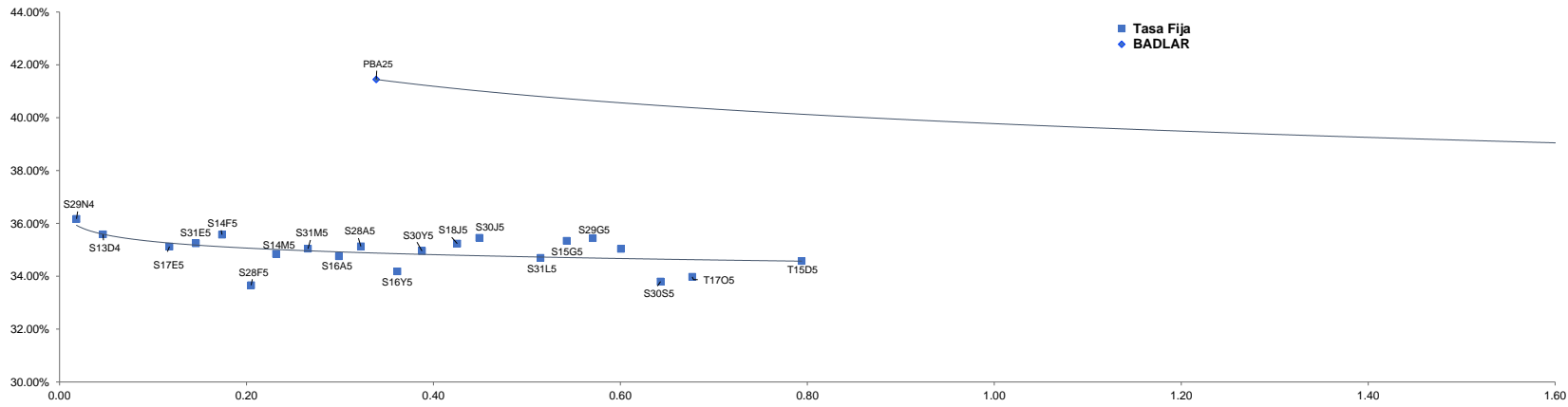
Fixed Income Research

Dólar Priv. **1003.250**
CER **36.025%**
SOFR **4.57%**

Bond														
Ajustables por CER	Ticker	Maturity	V.R. (%)	Price	TIR	TNA	Next coupon	Cupon	Frec	Parity	M Dur	Outstanding (MM)	31-oct	MoM
Bono del Tesoro CER 12/2024	T5X4	13-dic-24	100.00%	501.00	43.53%	39.61%	13-dic-24	Fija 4.25%	Sem.	98%	0.05	\$ 219,283.00	489.25	2.40%
Bono Dual 01/2025	TDE25	31-ene-25	100.00%	125,300.00	1.71%	1.70%	31-ene-25	Fijo 3.25%	Sem.	100%	0.19	\$ 8,596.00	122,000.00	2.70%
Bono del Tesoro CER 02/2025	T2X5	14-feb-25	100.00%	613.30	1.81%	1.80%	14-feb-25	Fija 4.25%	Sem.	101%	0.23	\$ 2,723,001.00	591.00	3.77%
Bono del Tesoro CER 03/2025	TZXM5	31-mar-25	100.00%	134.90	1.39%	1.38%	31-mar-25	Fijo 0%	Sem.	100%	0.35	\$ 298,559.00	128.10	5.31%
BONCER 2025	TC25	27-abr-25	100.00%	5,453.00	2.58%	2.56%	27-abr-25	Fija 4%	Sem.	101%	0.43	\$ 29,098.00	5,210.00	4.66%
Bono del Tesoro CER 05/2025	TZXY5	30-may-25	100.00%	100.40	3.10%	3.08%	30-may-25	Fijo 0%	Sem.	98%	0.51	\$ 365,935.00	94.40	6.36%
Bono del Tesoro CER 06/2025	TZX25	30-jun-25	100.00%	195.05	4.70%	4.65%	30-jun-25	Fijo 0%	Sem.	97%	0.58	\$ 1,611,109.00	184.40	5.78%
Bono del Tesoro CER 11/2025	TX25	09-nov-25	100.00%	1,053.00	2.57%	2.56%	09-may-25	Fija 1.80%	Sem.	99%	0.95	\$ 266,785.00	974.00	8.11%
Bono del Tesoro CER 12/2025	TZXD5	15-dic-25	100.00%	168.05	7.04%	7.06%	15-dic-25	Fijo 0%	-	93%	1.00	\$ 7,593,347.00	157.00	7.04%
Bono del Tesoro CER 03/2026	TZXM6	31-mar-26	100.00%	131.90	7.40%	7.50%	31-mar-26	Fijo 0%	Sem.	91%	1.26	\$ 1,173,279.00	122.75	7.45%
Bono del Tesoro CER 06/2026	TZX26	30-jun-26	100.00%	216.90	7.72%	7.90%	30-jun-26	Fijo 0%	-	89%	1.49	\$ 3,346,252.00	202.00	7.38%
Bono del Tesoro CER 10/2026	TZXO6	30-jun-26	100.00%	88.50	7.59%	7.86%	30-oct-26	Fijo 0%	-	87%	1.80	\$ 430,947.00	80.00	10.63%
Bono del Tesoro CER 2026	TX26	09-nov-26	80.00%	1,635.00	7.42%	7.29%	09-may-25	Fija 2.00%	Sem.	94%	1.15	\$ 268,669.60	1,972.00	-17.09%
Bono del Tesoro CER 12/2026	TZXD6	15-dic-26	100.00%	154.20	7.91%	8.24%	15-dic-26	Fijo 0%	-	85%	1.91	\$ 14,424,781.00	142.50	8.35%
Bono del Tesoro CER 03/2027	TZXM7	31-mar-27	100.00%	113.80	7.70%	8.11%	31-mar-27	Fijo 0%	-	84%	2.18	\$ 354,291.00	107.00	6.36%
Bono del Tesoro CER 06/2027	TZX27	30-jun-27	100.00%	199.70	8.06%	8.59%	30-jun-27	Fijo 0%	-	82%	2.40	\$ 2,547,611.00	183.00	9.13%
Bono del Tesoro CER 06/2027	TZXD7	15-dic-27	100.00%	140.30	8.60%	9.39%	15-dic-27	Fijo 0%	-	78%	2.81	\$ 11,944,821.00	130.50	7.51%
Bono del Tesoro CER 12/2028	TZX28	30-jun-28	100.00%	181.50	8.59%	9.60%	30-jun-28	Fijo 0%	-	74%	3.29	\$ 6,677,647.00	168.25	7.88%
Bono del Tesoro CER 11/2028	TX28	09-nov-28	80.00%	1,572.00	7.24%	7.11%	09-may-25	Fija 2.25%	-	113%	2.03	\$ 53,137.05	1,684.50	-6.68%
Bono del Tesoro CER 2031	TX31	30-nov-31	100.00%	885.00	6.53%	6.42%	30-nov-24	Fija 2.5%	Sem.	84%	4.22	\$ 45,562.00	775.00	14.19%
Discount \$ Ley Arg.	DICP	31-dic-33	95.00%	37,915.00	8.57%	8.39%	31-dic-24	Fija 5.83%	Sem.	91%	3.54	\$ 9,948.86	35,825.00	5.83%
PAR \$ Ley Arg.	PARP	31-dic-38	100.00%	20,430.00	8.39%	8.22%	31-mar-25	1.77%	Sem.	61%	7.73	\$ 2,858.00	17,920.00	14.01%
Tasa Fija	Ticker	Maturity	V.R. (%)	Price	TIR	TNA	Next coupon	Cupon	TEM	Parity	M Dur	Outstanding (MM)	31-oct	MoM
Letra del Tesoro Capitalizable	S29N4	29-nov-24	100.00%	133.79	43.35%	36.17%	29-nov-24	0.00%	3.00%	58%	0.02	\$ 1,121,471.00	130.95	2.17%
Letra del Tesoro Capitalizable	S13D4	13-dic-24	100.00%	124.05	42.18%	35.59%	13-dic-24	0.00%	2.93%	124%	0.05	\$ 4,129,433.00	121.18	2.37%
Letra del Tesoro Capitalizable	S17E5	17-ene-25	100.00%	124.25	40.75%	35.12%	17-ene-25	0.00%	2.85%	124%	0.12	\$ 1,289,957.00	120.90	2.77%
Letra del Tesoro Capitalizable	S31E5	31-ene-25	100.00%	161.43	40.60%	35.25%	31-ene-25	0.00%	2.84%	142%	0.15	\$ 2,057,497.00	156.70	3.02%
Letra del Tesoro Capitalizable	S14F5	14-feb-25	100.00%	111.86	40.72%	35.57%	14-feb-25	0.00%	2.85%	112%	0.17	\$ 1,422,200.00	108.55	3.05%
Letra del Tesoro Capitalizable	S28F5	28-feb-25	100.00%	145.00	37.72%	33.66%	28-feb-25	0.00%	2.67%	92%	0.20	\$ 1,127,251.00	139.62	3.85%
Letra del Tesoro Capitalizable	S14M5	14-mar-25	100.00%	113.60	39.21%	34.85%	14-mar-25	0.00%	2.76%	114%	0.23	\$ 800,646.00	110.00	3.27%
Letra del Tesoro Capitalizable	S31M5	31-mar-25	100.00%	138.20	39.11%	35.04%	31-mar-25	0.00%	2.75%	56%	0.27	\$ 611,614.00	132.55	4.26%
Letra del Tesoro Capitalizable	S16A5	16-abr-25	100.00%	115.10	38.44%	34.76%	16-abr-25	0.00%	2.71%	115%	0.30	\$ 995,916.00	110.60	4.07%
Letra del Tesoro Capitalizable	S28A5	28-abr-25	100.00%	113.45	38.67%	35.13%	28-abr-25	0.00%	2.72%	113%	0.32	\$ 989,880.00	108.60	4.47%
Letra del Tesoro Capitalizable	S16Y5	16-may-25	100.00%	117.40	37.20%	34.18%	16-may-25	0.00%	2.63%	117%	0.36	\$ 717,552.00	111.90	4.92%
Letra del Tesoro Capitalizable	S30Y5	30-may-25	100.00%	115.25	37.85%	34.96%	30-may-25	0.00%	2.67%	115%	0.39	\$ 313,776.00	109.60	5.16%
Letra del Tesoro Capitalizable	S18J5	18-jun-25	100.00%	122.80	37.83%	35.24%	18-jun-25	0.00%	2.67%	123%	0.43	\$ 1,588,543.21	116.35	5.54%
Letra del Tesoro Capitalizable	S30J5	30-jun-25	100.00%	120.60	37.86%	35.46%	30-jun-25	0.00%	2.67%	121%	0.45	\$ 917,336.00	114.11	5.69%
Letra del Tesoro Capitalizable	S31L5	31-jul-25	100.00%	119.10	36.46%	34.69%	31-jul-25	0.00%	2.59%	119%	0.51	\$ 332,567.00	112.00	6.34%
Letra del Tesoro Capitalizable	S15G5	15-ago-25	100.00%	116.55	36.92%	35.34%	15-ago-25	0.00%	2.62%	117%	0.54	\$ 746,933.00	109.34	6.59%
Letra del Tesoro Capitalizable	S29G5	29-ago-25	100.00%	123.80	36.79%	35.44%	29-ago-25	0.00%	2.61%	124%	0.57	\$ 1,063,900.00	116.30	6.45%
Letra del Tesoro Capitalizable	S12S5	12-sep-25	100.00%	123.80	36.12%	35.04%	12-sep-25	0.00%	2.57%	124%	0.60	\$ 828,692.00	115.70	7.00%
Letra del Tesoro Capitalizable	S30S5	30-sep-25	100.00%	123.75	34.54%	33.80%	30-sep-25	0.00%	2.47%	124%	0.64	\$ 457,562.00	114.97	7.64%
Bono del Tesoro Capitalizable	T17O5	17-oct-25	100.00%	121.45	34.47%	33.98%	17-oct-25	0.00%	2.46%	121%	0.68	\$ 674,297.00	112.30	8.15%
Letra del Tesoro Capitalizable	T15D5	15-dic-25	100.00%	124.75	34.21%	34.58%	15-dic-25	0.00%	2.45%	125%	0.79	\$ 1,084,427.00	114.25	9.19%
Bote 10/2026	TO26	18-oct-26	100.00%	83.00	30.63%	28.59%	17-abr-25	Fija 15.50%	2.22%	82%	1.47	\$ 96,569.71	74.40	11.56%
Tasa Variable	Ticker	Maturity	V.R. (%)	Price	TIR	TNA	Next coupon	Cupon	Frec	Parity	M Dur	Outstanding (MM)	31-oct	MoM
Ciudad de Buenos Aires 2028	BDC28	31-ene-25	100.00%	112.00	45.12%	39.03%	22-nov-24	Badlar + 375pbs	Trim.	101%	1.62	\$ 13,262.47	110.80	1.08%
Provincia de Buenos Aires 2025	PBA25	12-abr-25	0.00%	103.70	48.35%	41.45%	13-ene-25	Badlar + 375pbs	Trim.	100%	0.34	\$ -	102.60	1.07%
Dólar Linked	Ticker	Maturity	V.R. (%)	Price	TIR	TNA	Next coupon	Cupon	Frec	Parity	M Dur	Outstanding (MM)	31-oct	MoM
Bono Dual 01/2025	TDE25	31-ene-25	100.00%	125,300.00	-67.60%	-101.04%	31-ene-25	0.00%	-	125%	-18.88	\$ 8,596.00	122,000.00	2.70%
Bote vinculado al Dólar 03/2025	TV25	30-mar-25	100.00%	97,260.00	9.87%	9.64%	30-mar-25	0.50%	Sem.	97%	0.34	\$ 329.00	97,880.00	-0.63%
Bono del Tesoro vinculado al Dólar 06/2025	TZV25	30-jun-25	100.00%	97,600.00	2.08%	4.59%	30-jun-25	0.00%	-	97%	0.62	\$ 1,763.00	95,100.00	2.63%
Bono del Tesoro vinculado al Dólar 12/2025	TZVD5	15-dic-25	100.00%	97,310.00	2.90%	2.90%	30-jun-25	0.00%	-	97%	1.08	\$ 324.00	92,000.00	5.77%
Bono del Tesoro vinculado al Dólar 06/2026	TZV26	30-jun-26	100.00%	88,677.68	7.98%	8.17%	30-jun-26	0.00%	-	88%	1.61	\$ 383.00	86,000.00	3.11%



Curva Pesos



DISCLAIMER

Este informe ha sido elaborado a título informativo. El presente NO debe ser tomado como una recomendación o instrucción, y no reviste carácter de ofertas de productos y/o servicios ni solicitud de orden de compra y/o venta. Banco CMF S.A. no será responsable por ningún error y/u omisión del contenido.