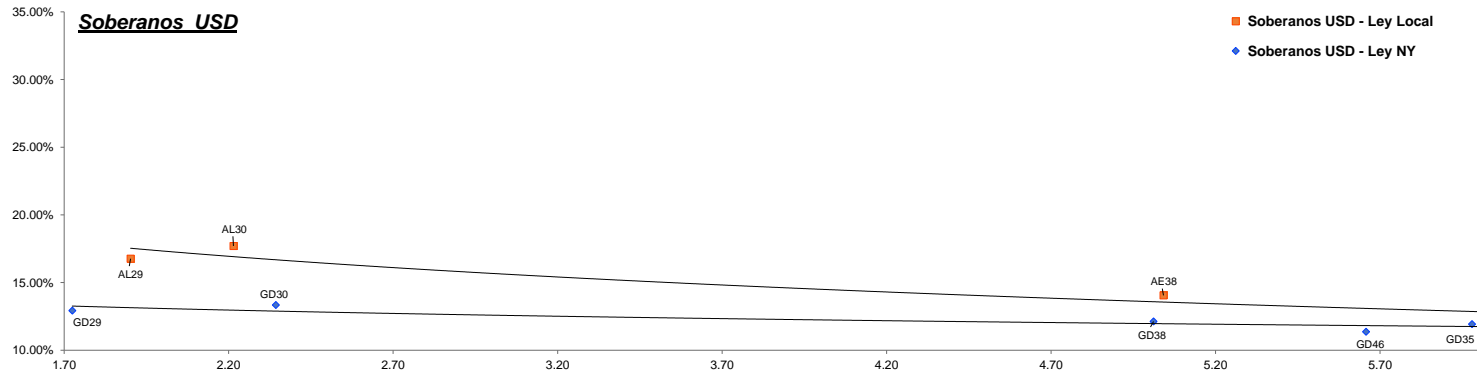


## Fixed Income Research

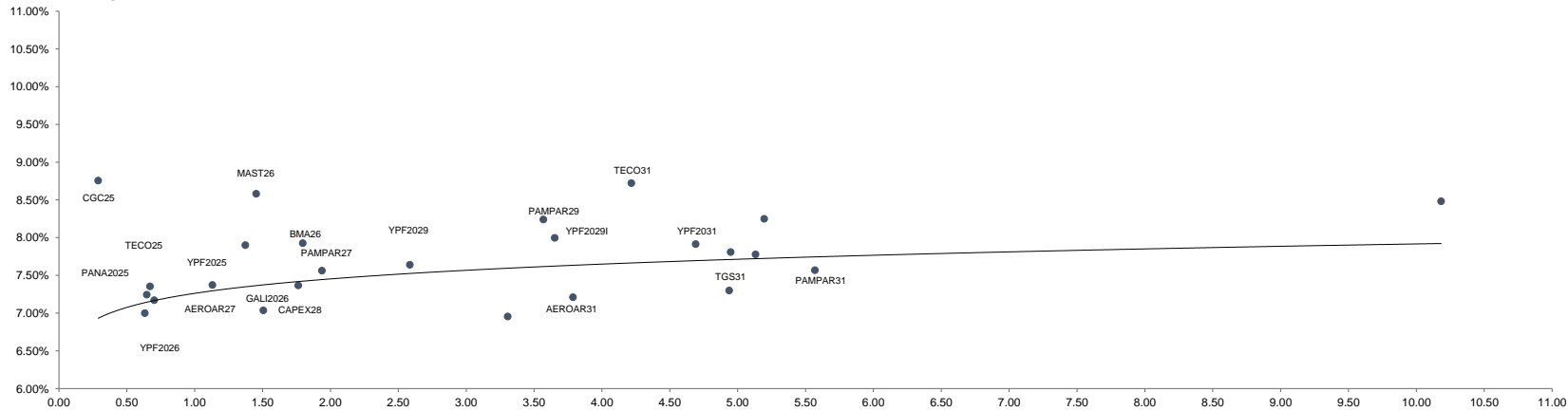
Bond	Ticker	Maturity	V.R. (%)	Price	TIR	TNA	Next coupon	Cupon	Frec	Parity	M Dur	Outstanding (MM)	31-oct	MoM
<b>Soberanos USD</b>														
Bonos Intern. 2029 Ley N.Y. - Step up	GD29	09-jul-29	100.00%	77.22	13.35%	12.93%	09-ene-25	1.000%	Sem.	77%	1.72	\$ 2,635.03	71.84	7.49%
Bonos Intern. 2030 Ley N.Y. - Step up	GD30	09-jul-30	96.00%	72.74	13.78%	13.34%	09-ene-25	0.750%	Sem.	73%	2.34	\$ 15,446.99	67.34	8.02%
Bonos Intern. 2035 Ley N.Y. - Step up	GD35	09-jul-35	100.00%	62.00	12.29%	11.93%	09-ene-25	4.125%	Sem.	63%	5.98	\$ 20,501.72	55.40	11.91%
Bonos Intern. 2038 Ley N.Y. - Step up	GD38	09-ene-38	100.00%	66.03	12.49%	12.12%	09-ene-25	5.000%	Sem.	67%	5.01	\$ 11,405.07	59.89	10.25%
Bonos Intern. 2041 Ley N.Y. - Step up	GD41	09-jul-41	100.00%	57.81	12.06%	11.72%	09-ene-25	3.500%	Sem.	58%	6.21	\$ 10,482.11	51.49	12.27%
Bonos Intern. 2046 Ley N.Y. - Step up	GD46	09-jul-46	100.00%	63.00	11.69%	11.36%	09-ene-25	4.125%	Sem.	64%	5.66	\$ 2,092.00	57.43	9.70%
BONAR 2029 - step up	AL29	09-jul-29	100.00%	72.56	16.76%	16.76%	09-ene-25	1.000%	Sem.	73%	1.90	\$ 1,394.90	69.59	4.27%
BONAR 2030 - step up	AL30	09-jul-30	96.00%	66.92	17.70%	17.70%	09-ene-25	0.750%	Sem.	67%	2.21	\$ 13,038.05	62.93	6.34%
BONAR 2035 - step up	AL35	09-jul-35	100.00%	61.11	12.54%	12.54%	09-ene-25	4.125%	Sem.	62%	6.03	\$ 10,151.85	56.54	8.08%
BONAR 2038 - step up	AE38	09-ene-38	100.00%	61.11	14.05%	14.05%	09-ene-25	5.000%	Sem.	62%	5.04	\$ 7,231.45	56.54	8.08%
BONAR 2041 - step up	AL41	09-jul-41	100.00%	56.60	14.05%	12.41%	09-ene-25	3.500%	Sem.	57%	6.34	\$ 1,542.23	52.01	8.83%
<b>Soberanos Euros</b>														
Bonos Intern. 2029 Euros - Step up	GE29	09-jul-29	100.00%	72.82	15.86%	15.86%	09-ene-25	0.500%	Sem.	73%	1.68	\$ 90.39	68.50	6.31%
Bonos Intern. 2030 Euros - Step up	GE30	09-jul-30	96.00%	69.05	14.96%	14.96%	09-ene-25	0.125%	Sem.	69%	2.08	\$ 1,118.97	64.33	7.34%
Bonos Intern. 2035 Euros - Step up	GE35	09-jul-35	100.00%	55.81	13.14%	13.14%	09-ene-25	3.875%	Sem.	56%	5.99	\$ 298.80	50.32	10.91%
Bonos Intern. 2038 Euros - Step up	GE38	09-ene-38	100.00%	59.57	13.43%	13.43%	09-ene-25	4.250%	Sem.	60%	5.01	\$ 809.34	54.71	8.88%
Bonos Intern. 2041 Euros - Step up	GE41	09-jul-41	100.00%	52.05	13.05%	13.05%	09-ene-25	3.000%	Sem.	53%	6.17	\$ 1,572.60	47.60	9.35%
Bonos Intern. 2046 Euros - Step up	GE46	09-jul-46	100.00%	56.02	12.99%	12.99%	09-ene-25	3.750%	Sem.	57%	5.44	\$ 248.13	51.78	8.19%
<b>Banco Central USD</b>														
BOPREAL Serie 1A	BPOA7	30-abr-25	100.00%	93.11	23.26%	22.05%	30-abr-25	5.000%	Sem.	93%	0.37	\$ 996.00	93.93	-0.87%
BOPREAL Serie 2	BPJ25	30-jun-25	66.67%	65.75	4.55%	4.55%	30-nov-24	0.000%	Mens.	99%	0.41	\$ 1,833.40	65.66	0.14%
BOPREAL Serie 1B	BPOB7	30-abr-26	100.00%	89.14	13.98%	13.52%	30-abr-25	5.000%	Sem.	89%	1.24	\$ 996.00	89.32	-0.20%
BOPREAL Serie 3	BPY26	31-may-26	100.00%	90.69	11.30%	11.00%	30-nov-24	3.000%	Sem.	91%	1.19	\$ 892.00	88.69	2.26%
BOPREAL Serie 1C	BPOC7	30-abr-27	100.00%	84.33	13.05%	12.65%	30-abr-25	5.000%	Sem.	84%	2.06	\$ 1,494.00	84.69	-0.43%
BOPREAL Serie 1D	BPOD7	31-oct-27	100.00%	84.11	12.45%	12.08%	30-abr-25	5.000%	Sem.	84%	2.26	\$ 1,494.00	83.73	0.45%
<b>Provinciales</b>														
Buenos Aires 2037A	BA37D	01-sep-37	96.34%	64.09	17.18%	16.50%	01-mar-25	6.625%	Sem.	63%	4.02	\$ 5,973.08	58.08	10.35%
Buenos Aires 2037B	BB37D	01-sep-37	100.00%	56.41	16.14%	15.53%	01-mar-25	5.875%	Sem.	56%	5.42	\$ 770.00	51.33	9.90%
Buenos Aires 2037C	BC37D	01-sep-37	100.00%	46.49	18.95%	18.13%	01-mar-25	5.250%	Sem.	46%	5.22	\$ 150.00	42.57	9.21%
Ciudad de Bs. As. 2027	CABA27	01-jun-27	100.00%	103.23	5.29%	5.22%	01-dic-24	7.500%	Sem.	103%	1.39	\$ 890.00	102.95	0.27%
Cordoba 2025	PDCAR25	10-dic-25	50.00%	97.64	11.62%	11.30%	10-dic-24	3.000%	Sem.	98%	0.50	\$ 339.50	97.70	-0.06%
Cordoba 2027	PDCAR27	01-jun-27	100.00%	93.63	11.32%	11.02%	01-dic-24	3.000%	Sem.	94%	1.54	\$ 494.00	93.52	0.12%
Cordoba 2029	PDCAR29	01-feb-29	100.00%	91.03	10.25%	10.00%	01-feb-25	3.000%	Sem.	91%	2.89	\$ 433.00	88.47	2.89%
Ciudad de Córdoba 2027	COROA27	29-sep-27	75.00%	82.73	21.70%	20.63%	29-mar-25	Step-up	Sem.	83%	1.29	\$ 421.50	79.48	4.09%
Mendoza 2029	PMM29	19-mar-29	69.23%	91.14	10.51%	10.25%	19-mar-25	2.750%	Sem.	91%	1.98	\$ 389.08	91.08	0.07%
Chubut 2030	CHUBT30	26-jul-30	60.33%	96.15	10.28%	9.91%	27-ene-25	7.750%	Trim.	96%	0.46	\$ 392.17	95.67	0.50%
Neuquen 2030 (No Garant)	NEU30A	27-abr-30	84.62%	94.04	9.53%	9.32%	27-abr-25	2.500%	Sem.	94%	2.46	\$ 309.69	93.19	0.91%
Neuquen 2030 (Garant)	NEU30M	12-may-30	67.77%	102.63	7.78%	7.56%	12-feb-25	5.170%	Sem.	103%	2.45	\$ 243.63	102.68	-0.05%
Santa Fe 2027	SFE27	01-nov-27	100.00%	94.77	10.20%	9.95%	01-may-25	6.900%	Sem.	95%	1.73	\$ 250.00	94.49	0.30%
Rio Negro 2028	PRN28	10-mar-28	77.78%	84.16	18.74%	17.94%	10-mar-25	2.750%	Sem.	84%	1.45	\$ 175.00	85.41	-1.46%
Tierra del fuego 2027	FUE27	17-abr-27	37.00%	97.81	11.16%	10.72%	17-ene-25	8.950%	Trim.	98%	1.22	\$ 75.90	97.79	0.02%



## Fixed Income Research

Bond	Ticker	Maturity	V.R. (%)	Price	TIR	TNA	Next coupon	Cupon	Frec	Parity	M Dur	Outstanding (MM)	31-oct	MoM
<b>Corporativos</b>														
<b>Alimentos y bebidas</b>														
Cresud 2026	CRESUD26	03-mar-26	100.00%	103.37	5.33%	5.26%	03-ene-25	8.000%	Sem.	103%	1.18	\$ 70.57	103.30	0.07%
Mastellone 2026	MAST26	30-jun-26	100.00%	103.93	8.58%	8.32%	30-dic-24	10.950%	Trim.	104%	1.45	\$ 110.87	104.27	-0.33%
Arcor 2027	ARCOR27	09-oct-27	85.72%	103.77	5.85%	5.77%	09-abr-25	8.250%	Sem.	104%	1.50	\$ 109.67	103.55	0.21%
<b>Bancos</b>														
Galicia 2026	GALI2026	19-jul-26	100.00%	101.55	7.04%	6.92%	20-ene-25	8.250%	Sem.	102%	1.51	\$ 250.00	101.03	0.51%
Banco Macro 2026	BMA26	04-nov-26	100.00%	97.97	7.93%	7.78%	04-may-25	6.750%	Sem.	98%	1.80	\$ 400.00	97.01	0.99%
Galicia 2028	GALI2028	10-oct-28	100.00%	103.03	6.96%	6.84%	10-abr-25	7.750%	Sem.	103%	3.31	\$ 325.00	101.41	1.60%
<b>Petróleo y Gas</b>														
Cia Gral de Combustible 2025	CGC25	08-mar-25	33.50%	100.26	8.76%	8.57%	08-mar-25	9.500%	Sem.	100%	0.29	\$ 68.44	100.53	-0.27%
Panamerican Energy 2025	PANA2025	21-jul-25	100.00%	100.21	7.00%	6.88%	21-ene-25	7.250%	Sem.	100%	0.63	\$ 105.15	100.28	-0.07%
Panamerican Energy 2027	PANA2027	30-abr-27	100.00%	104.37	5.98%	5.90%	30-abr-25	9.125%	Sem.	104%	1.34	\$ 300.00	104.99	-0.59%
Pampa Energia 2027	PAMPAR27	24-ene-27	100.00%	100.07	7.56%	7.43%	24-ene-25	7.500%	Sem.	100%	1.94	\$ 750.00	100.07	0.00%
Capex 2028	CAPEX28	25-ago-28	100.00%	103.57	7.37%	7.24%	25-feb-25	9.250%	Sem.	103%	1.76	\$ 188.80	103.62	-0.05%
Pampa Energia 2029	PAMPAR29	15-abr-29	100.00%	103.79	8.24%	8.08%	15-abr-25	9.125%	Sem.	104%	3.57	\$ 300.00	103.55	0.23%
YPF 2025	YPF2025	28-jul-25	100.00%	100.86	7.24%	7.12%	28-ene-25	8.500%	Sem.	101%	0.65	\$ 1,131.77	100.53	0.33%
YPF2026 (Clase XVI)	YPF2026	12-feb-26	38.46%	101.42	7.17%	6.99%	12-feb-25	4.000%	Trim.	101%	0.70	\$ 298.20	100.80	0.62%
YPF2029 (Clase XVII)	YPF2029	30-jun-29	100.00%	103.98	7.64%	7.50%	30-dic-24	9.000%	Sem.	104%	2.59	\$ 747.00	103.33	0.63%
YPF2029 (Clase I)	YPF2029I	27-jun-29	100.00%	102.42	8.00%	7.84%	27-dic-24	8.500%	Sem.	102%	3.65	\$ 500.00	101.78	0.63%
Transportadora Gas del Sur 2031	TGS31	24-jul-31	100.00%	104.24	7.81%	7.66%	24-ene-25	8.500%	Sem.	104%	4.95	\$ 490.00	103.89	0.34%
Pampa Energia 2031	PAMPAR31	10-sep-31	100.00%	101.61	7.78%	7.63%	10-mar-25	7.950%	Sem.	102%	5.13	\$ 410.00	100.45	1.15%
YPF 2031	YPF2031	10-sep-31	100.00%	104.72	7.91%	7.76%	11-mar-25	8.750%	Sem.	105%	4.69	\$ 500.00	102.40	2.27%
Panamerican Energy 2032	PANA2032	30-abr-32	100.00%	106.70	7.30%	7.17%	30-abr-25	8.500%	Sem.	107%	4.94	\$ 400.00	105.69	0.96%
YPF Luz 2032	YPFL2032	16-oct-32	100.00%	98.85	8.25%	8.09%	16-abr-25	7.875%	Sem.	99%	5.20	\$ 420.00	98.42	0.44%
YPF2033 (Clase XVIII)	YPF2033	30-sep-33	100.00%	97.56	7.57%	7.43%	30-mar-25	7.000%	Sem.	98%	5.57	\$ 575.65	96.77	0.82%
YPF 2047	YPF2047	15-dic-47	100.00%	86.55	8.48%	8.31%	15-dic-24	7.000%	Sem.	87%	10.18	\$ 750.00	84.08	2.94%
<b>Utilidades</b>														
Genneia 2027	GNNEIA27	02-sep-27	60.00%	101.37	7.90%	7.75%	02-mar-25	8.750%	Sem.	101%	1.37	\$ 219.67	101.19	0.18%
<b>Otros</b>														
Telecom 2025	TECO25	06-ago-25	34.00%	100.82	7.36%	7.22%	06-feb-25	8.500%	Sem.	101%	0.67	\$ 112.37	100.73	0.09%
Aeropuertos Argentina 2000	AEROAR27	01-feb-27	37.50%	99.63	7.37%	7.18%	03-feb-25	9.375%	Trim.	100%	1.13	\$ 114.75	99.65	-0.02%
Telecom 2031	TECO31	18-jul-31	100.00%	104.14	8.72%	8.54%	18-ene-25	9.500%	Sem.	104%	4.22	\$ 617.22	103.56	0.56%
Aeropuertos Argentina 2000	AEROAR31	01-ago-31	100.00%	105.70	7.21%	7.02%	01-feb-25	8.500%	Trim.	106%	3.79	\$ 272.95	104.49	1.16%

### Corporativos

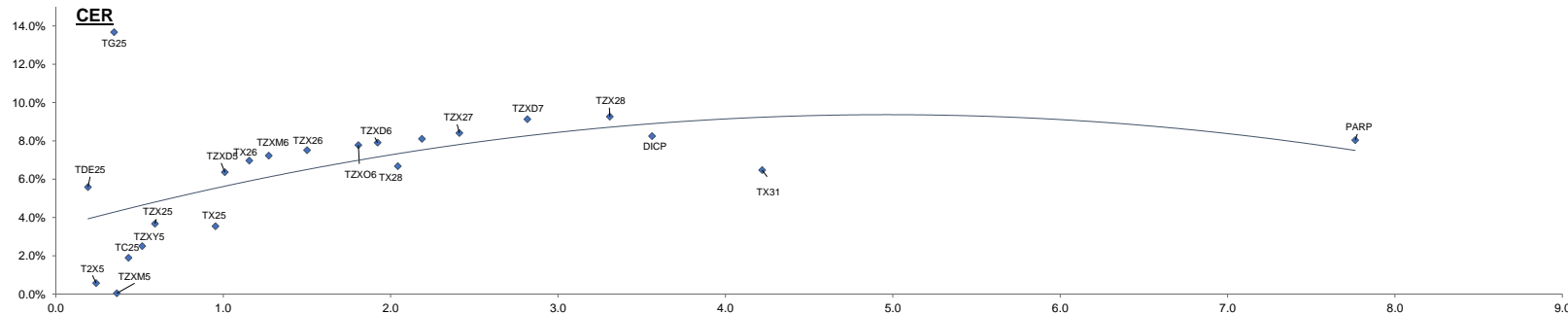


## Fixed Income Research

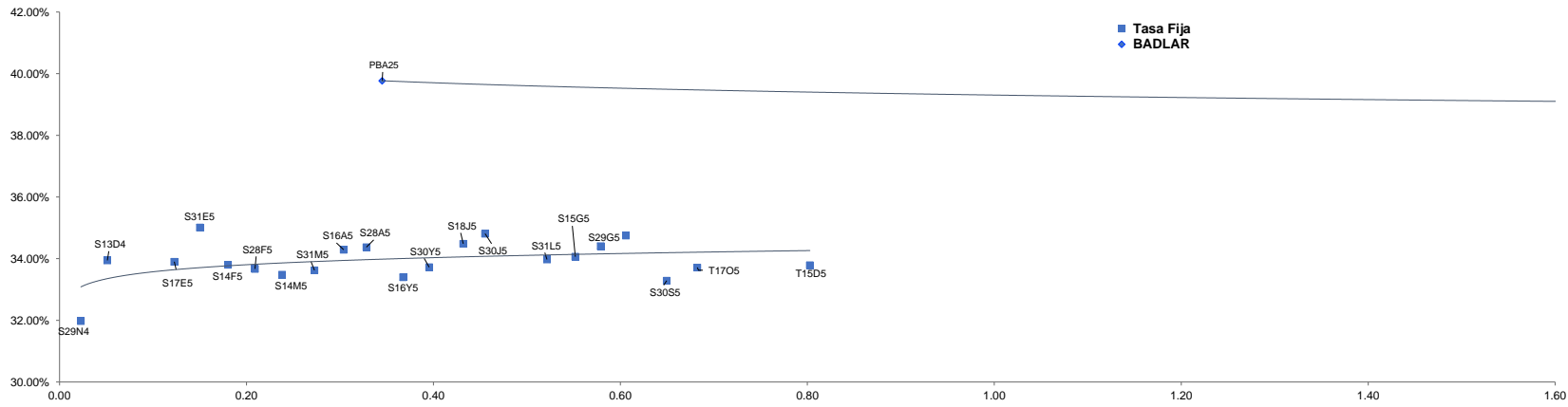
**Dólar 1002.750**

**Badlar Priv. 35.800%**  
**CER 495.856**  
**SOFR 4.58%**

Bond														
Ajustables por CER	Ticker	Maturity	V.R. (%)	Price	TIR	TNA	Next coupon	Cupon	Frec	Parity	M Dur	Outstanding (MM)	31-oct	MoM
Bono del Tesoro CER 12/2024	T5X4	13-dic-24	100.00%	500.30	42.31%	38.59%	13-dic-24	Fija 4.25%	Sem.	98%	0.06	\$ 219,283.00	489.25	2.26%
Bono Dual 01/2025	TDE25	31-ene-25	100.00%	123,900.00	5.71%	5.58%	31-ene-25	Fijo 3.25%	Sem.	99%	0.19	\$ 8,596.00	122,000.00	1.56%
Bono del Tesoro CER 02/2025	T2X5	14-feb-25	100.00%	613.00	0.57%	0.57%	14-feb-25	Fija 4.25%	Sem.	101%	0.24	\$ 2,723,001.00	591.00	3.72%
Bono del Tesoro CER 03/2025	TZXM5	31-mar-25	100.00%	135.10	0.04%	0.04%	31-mar-25	Fijo 0%	Sem.	100%	0.36	\$ 298,559.00	128.10	5.46%
BONCER 2025	TC25	27-abr-25	100.00%	5,450.00	1.90%	1.89%	27-abr-25	Fija 4%	Sem.	101%	0.43	\$ 209,098.00	5,210.00	4.61%
Bono del Tesoro CER 05/2025	TZXY5	30-may-25	100.00%	100.35	2.52%	2.50%	30-may-25	Fijo 0%	Sem.	99%	0.52	\$ 365,935.00	94.40	6.30%
Bono del Tesoro CER 06/2025	TZX25	30-jun-25	100.00%	195.50	3.70%	3.67%	30-jun-25	Fijo 0%	Sem.	98%	0.59	\$ 1,611,109.00	184.40	6.02%
Bono del Tesoro CER 08/2025	TG25	23-ago-25	100.00%	490.00	14.14%	13.67%	23-ago-25	Fijo 0%	Sem.	95%	0.35	\$ 633,272.50	505.00	-2.97%
Bono del Tesoro CER 11/2025	TX25	09-nov-25	100.00%	1,039.50	3.57%	3.54%	09-may-25	Fija 1.80%	Sem.	98%	0.95	\$ 266,785.00	974.00	6.72%
Bono del Tesoro CER 12/2025	TZXD5	15-dic-25	100.00%	168.60	6.35%	6.36%	15-dic-25	Fijo 0%	-	94%	1.01	\$ 7,593,347.00	157.00	7.39%
Bono del Tesoro CER 03/2026	TZXM6	31-mar-26	100.00%	131.85	7.14%	7.23%	31-mar-26	Fijo 0%	Sem.	91%	1.27	\$ 1,173,279.00	122.75	7.41%
Bono del Tesoro CER 06/2026	TZX26	30-jun-26	100.00%	217.30	7.35%	7.51%	30-jun-26	Fijo 0%	-	89%	1.50	\$ 3,346,252.00	202.00	7.57%
Bono del Tesoro CER 10/2026	TZXO6	30-jun-26	100.00%	88.30	7.51%	7.78%	30-oct-26	Fijo 0%	-	87%	1.81	\$ 430,947.00	80.00	10.38%
Bono del Tesoro CER 2026	TX26	09-nov-26	80.00%	1,635.00	7.09%	6.97%	09-may-25	Fija 2.00%	Sem.	94%	1.16	\$ 268,669.60	1,972.00	-17.09%
Bono del Tesoro CER 12/2026	TZXD6	15-dic-26	100.00%	154.75	7.59%	7.90%	15-dic-26	Fijo 0%	-	86%	1.92	\$ 14,424,781.00	142.50	8.60%
Bono del Tesoro CER 03/2027	TZXM7	31-mar-27	100.00%	113.40	7.69%	8.10%	31-mar-27	Fijo 0%	-	84%	2.19	\$ 354,291.00	107.00	5.98%
Bono del Tesoro CER 06/2027	TZX27	30-jun-27	100.00%	199.75	7.89%	8.41%	30-jun-27	Fijo 0%	-	82%	2.41	\$ 2,547,611.00	183.00	9.15%
Bono del Tesoro CER 06/2027	TZXD7	15-dic-27	100.00%	140.65	8.38%	9.13%	15-dic-27	Fijo 0%	-	78%	2.82	\$ 11,944,821.00	130.50	7.78%
Bono del Tesoro CER 12/2028	TZX28	30-jun-28	100.00%	182.50	8.32%	9.26%	30-jun-28	Fijo 0%	-	75%	3.31	\$ 6,677,647.00	168.25	8.47%
Bono del Tesoro CER 11/2028	TX28	09-nov-28	80.00%	1,580.00	6.79%	6.68%	09-may-25	Fija 2.25%	-	114%	2.04	\$ 53,137.05	1,684.50	-6.20%
Bono del Tesoro CER 2031	TX31	30-nov-31	100.00%	879.90	6.58%	6.47%	30-nov-24	Fija 2.5%	Sem.	84%	4.22	\$ 45,562.00	775.00	13.54%
Discount \$ Ley Arg.	DICP	31-dic-33	95.00%	37,970.00	8.42%	8.25%	31-dic-24	Fija 5.83%	Sem.	92%	3.56	\$ 9,948.86	35,825.00	5.99%
PAR \$ Ley Arg.	PARP	31-dic-38	100.00%	20,650.00	8.19%	8.03%	31-mar-25	1.77%	Sem.	62%	7.76	\$ 2,858.00	17,920.00	15.23%
Tasa Fija	Ticker	Maturity	V.R. (%)	Price	TIR	TNA	Next coupon	Cupon	TEM	Parity	M Dur	Outstanding (MM)	31-oct	MoM
Letra del Tesoro Capitalizable	S29N4	29-nov-24	100.00%	133.70	37.47%	31.98%	29-nov-24	0.00%	2.65%	58%	0.02	\$ 1,121,471.00	130.95	2.10%
Letra del Tesoro Capitalizable	S13D4	13-dic-24	100.00%	123.95	39.87%	33.94%	13-dic-24	0.00%	2.80%	124%	0.05	\$ 4,129,433.00	121.18	2.29%
Letra del Tesoro Capitalizable	S17E5	17-ene-25	100.00%	124.26	39.08%	33.90%	17-ene-25	0.00%	2.75%	124%	0.12	\$ 1,289,957.00	120.90	2.78%
Letra del Tesoro Capitalizable	S31E5	31-ene-25	100.00%	161.21	40.25%	35.01%	31-ene-25	0.00%	2.82%	142%	0.15	\$ 2,057,497.00	156.70	2.88%
Letra del Tesoro Capitalizable	S14F5	14-feb-25	100.00%	112.10	38.40%	33.80%	14-feb-25	0.00%	2.71%	112%	0.18	\$ 1,422,200.00	108.55	3.27%
Letra del Tesoro Capitalizable	S28F5	28-feb-25	100.00%	144.75	37.70%	33.67%	28-feb-25	0.00%	2.66%	91%	0.21	\$ 1,127,251.00	139.62	3.67%
Letra del Tesoro Capitalizable	S14M5	14-mar-25	100.00%	113.85	37.46%	33.48%	14-mar-25	0.00%	2.65%	114%	0.24	\$ 800,646.00	110.00	3.50%
Letra del Tesoro Capitalizable	S31M5	31-mar-25	100.00%	138.60	37.33%	33.62%	31-mar-25	0.00%	2.64%	56%	0.27	\$ 611,614.00	132.55	4.56%
Letra del Tesoro Capitalizable	S16A5	16-abr-25	100.00%	115.10	37.84%	34.29%	16-abr-25	0.00%	2.67%	115%	0.30	\$ 995,916.00	110.60	4.07%
Letra del Tesoro Capitalizable	S28A5	28-abr-25	100.00%	113.59	37.72%	34.37%	28-abr-25	0.00%	2.67%	114%	0.33	\$ 989,880.00	108.60	4.59%
Letra del Tesoro Capitalizable	S16Y5	16-may-25	100.00%	117.60	36.25%	33.40%	16-may-25	0.00%	2.57%	118%	0.37	\$ 717,552.00	111.90	5.09%
Letra del Tesoro Capitalizable	S30Y5	30-may-25	100.00%	115.70	36.39%	33.72%	30-may-25	0.00%	2.58%	116%	0.40	\$ 313,776.00	109.60	5.57%
Letra del Tesoro Capitalizable	S18J5	18-jun-25	100.00%	123.05	36.93%	34.48%	18-jun-25	0.00%	2.62%	123%	0.43	\$ 1,588,543.21	116.35	5.76%
Letra del Tesoro Capitalizable	S30J5	30-jun-25	100.00%	120.80	37.09%	34.81%	30-jun-25	0.00%	2.63%	121%	0.46	\$ 917,336.00	114.11	5.86%
Letra del Tesoro Capitalizable	S31L5	31-jul-25	100.00%	119.40	35.64%	33.97%	31-jul-25	0.00%	2.54%	119%	0.52	\$ 332,567.00	112.00	6.61%
Letra del Tesoro Capitalizable	S15G5	15-ago-25	100.00%	117.25	35.50%	34.06%	15-ago-25	0.00%	2.53%	117%	0.55	\$ 746,933.00	109.34	7.23%
Letra del Tesoro Capitalizable	S29G5	29-ago-25	100.00%	124.40	35.64%	34.40%	29-ago-25	0.00%	2.54%	124%	0.58	\$ 1,063,900.00	116.30	6.96%
Letra del Tesoro Capitalizable	S12S5	12-sep-25	100.00%	123.84	35.79%	34.75%	12-sep-25	0.00%	2.55%	124%	0.61	\$ 828,692.00	115.70	7.04%
Letra del Tesoro Capitalizable	S30S5	30-sep-25	100.00%	124.00	33.98%	33.29%	30-sep-25	0.00%	2.43%	124%	0.65	\$ 457,562.00	114.97	7.85%
Bono del Tesoro Capitalizable	T17O5	17-oct-25	100.00%	121.50	34.17%	33.71%	17-oct-25	0.00%	2.45%	122%	0.68	\$ 674,297.00	112.30	8.19%
Letra del Tesoro Capitalizable	T15D5	15-dic-25	100.00%	125.35	33.41%	33.79%	15-dic-25	0.00%	2.40%	125%	0.80	\$ 1,084,427.00	114.25	9.72%
Bote 10/2026	TO26	18-oct-26	100.00%	83.05	30.47%	28.45%	17-abr-25	Fija 15.50%	2.21%	82%	1.47	\$ 96,569.71	74.40	11.63%
Tasa Variable	Ticker	Maturity	V.R. (%)	Price	TIR	TNA	Next coupon	Cupon	Frec	Parity	M Dur	Outstanding (MM)	31-oct	MoM
Ciudad de Buenos Aires 2028	BDC28	31-ene-25	100.00%	111.25	45.21%	39.09%	22-nov-24	Badlar + 375pbs	Trim.	101%	1.63	\$ 13,262.47	110.80	0.41%
Provincia de Buenos Aires 2025	PBA25	12-abr-25	0.00%	104.00	46.10%	39.77%	13-ene-25	Badlar + 375pbs	Trim.	100%	0.35	\$ -	102.60	1.36%
Dollar Linked	Ticker	Maturity	V.R. (%)	Price	TIR	TNA	Next coupon	Cupon	Frec	Parity	M Dur	Outstanding (MM)	31-oct	MoM
Bono Dual 01/2025	TDE25	31-ene-25	100.00%	123,900.00	-64.78%	-94.05%	31-ene-25	0.00%	-	124%	3.41	\$ 8,596.00	122,000.00	1.56%
Bote vinculado al Dólar 03/2025	TV25	30-mar-25	100.00%	98,300.00	6.39%	6.29%	30-mar-25	0.50%	Sem.	98%	0.35	\$ 329.00	97,880.00	0.43%
Bono del Tesoro vinculado al Dólar 06/2025	TZV25	30-jun-25	100.00%	97,990.00	1.74%	3.80%	30-jun-25	0.00%	-	98%	0.62	\$ 1,763.00	95,100.00	3.04%
Bono del Tesoro vinculado al Dólar 12/2025	TZVD5	15-dic-25	100.00%	98,990.00	1.21%	1.21%	30-jun-25	0.00%	-	99%	1.09	\$ 324.00	92,000.00	7.60%
Bono del Tesoro vinculado al Dólar 06/2026	TZV26	30-jun-26	100.00%	88,000.00	8.43%	8.64%	30-jun-26	0.00%	-	88%	1.61	\$ 383.00	86,000.00	2.33%



**Curva Pesos**



**DISCLAIMER**

Este informe ha sido elaborado a título informativo. El presente NO debe ser tomado como una recomendación o instrucción, y no reviste carácter de ofertas de productos y/o servicios ni solicitud de orden de compra y/o venta. Banco CMF S.A. no será responsable por ningún error y/u omisión del contenido.