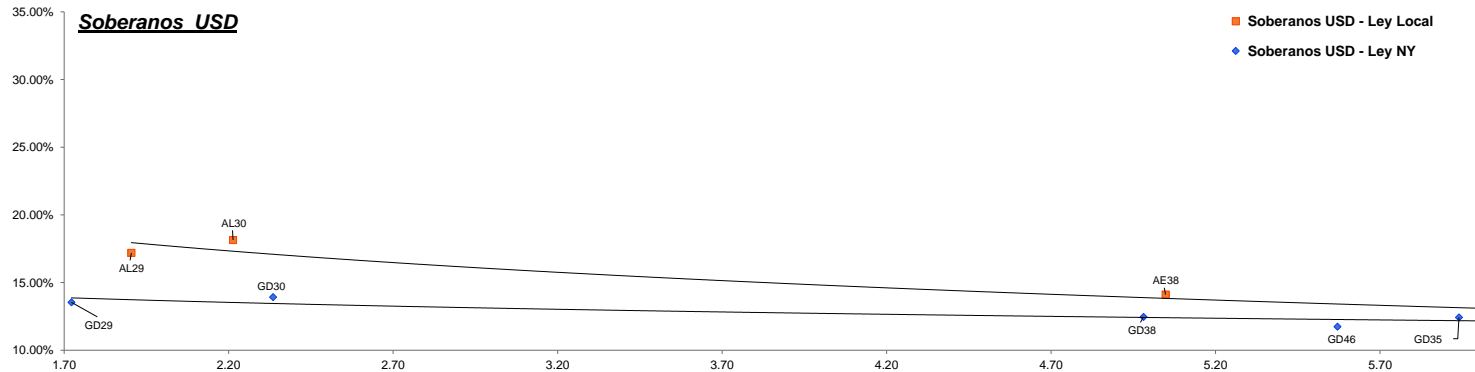
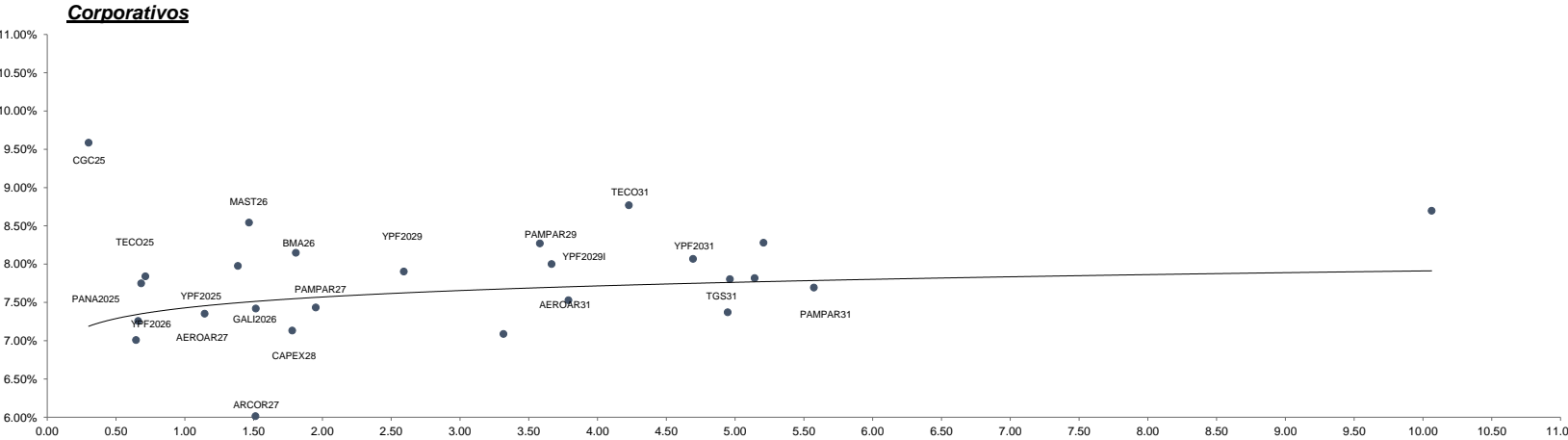


Fixed Income Research

Bond	Ticker	Maturity	V.R. (%)	Price	TIR	TNA	Next coupon	Cupon	Frec	Parity	M Dur	Outstanding (MM)	31-oct	MoM
Soberanos USD (cierre 08/11/2024)														
Bonos Intern. 2029 Ley N.Y. - Step up	GD29	09-jul-29	100.00%	76.16	14.00%	13.54%	09-ene-25	1.000%	Sem.	76%	1.72	\$ 2,635.03	71.84	6.01%
Bonos Intern. 2030 Ley N.Y. - Step up	GD30	09-jul-30	96.00%	71.62	14.41%	13.93%	09-ene-25	0.750%	Sem.	72%	2.33	\$ 15,446.99	67.34	6.36%
Bonos Intern. 2035 Ley N.Y. - Step up	GD35	09-jul-35	100.00%	60.10	12.81%	12.43%	09-ene-25	4.125%	Sem.	61%	5.94	\$ 20,501.72	55.40	8.48%
Bonos Intern. 2038 Ley N.Y. - Step up	GD38	09-ene-38	100.00%	64.82	12.85%	12.46%	09-ene-25	5.000%	Sem.	65%	4.98	\$ 11,405.07	59.89	8.23%
Bonos Intern. 2041 Ley N.Y. - Step up	GD41	09-jul-41	100.00%	55.79	12.63%	12.26%	09-ene-25	3.500%	Sem.	56%	6.12	\$ 10,482.11	51.49	8.35%
Bonos Intern. 2046 Ley N.Y. - Step up	GD46	09-jul-46	100.00%	61.57	12.09%	11.74%	09-ene-25	4.125%	Sem.	62%	5.57	\$ 2,092.00	57.43	7.21%
BONAR 2029 - step up	AL29	09-jul-29	100.00%	71.87	17.19%	17.19%	09-ene-25	1.000%	Sem.	72%	1.90	\$ 1,394.90	69.59	3.28%
BONAR 2030 - step up	AL30	09-jul-30	96.00%	66.18	18.14%	18.14%	09-ene-25	0.750%	Sem.	66%	2.21	\$ 13,038.05	62.93	5.16%
BONAR 2035 - step up	AL35	09-jul-35	100.00%	60.89	12.59%	12.59%	09-ene-25	4.125%	Sem.	61%	6.04	\$ 10,151.85	56.54	7.69%
BONAR 2038 - step up	AE38	09-ene-38	100.00%	60.89	14.11%	14.11%	09-ene-25	5.000%	Sem.	62%	5.05	\$ 7,231.45	56.54	7.69%
BONAR 2041 - step up	AL41	09-jul-41	100.00%	54.31	14.11%	13.08%	09-ene-25	3.500%	Sem.	55%	6.24	\$ 1,542.23	52.01	4.42%
Soberanos Euros														
Bonos Intern. 2029 Euros - Step up	GE29	09-jul-29	100.00%	72.15	16.27%	16.27%	09-ene-25	0.500%	Sem.	72%	1.68	\$ 90.39	68.50	5.33%
Bonos Intern. 2030 Euros - Step up	GE30	09-jul-30	96.00%	68.13	15.49%	15.49%	09-ene-25	0.125%	Sem.	68%	2.08	\$ 1,118.97	64.33	5.91%
Bonos Intern. 2035 Euros - Step up	GE35	09-jul-35	100.00%	54.71	13.47%	13.47%	09-ene-25	3.875%	Sem.	55%	5.97	\$ 298.80	50.32	8.72%
Bonos Intern. 2038 Euros - Step up	GE38	09-ene-38	100.00%	58.75	13.69%	13.69%	09-ene-25	4.250%	Sem.	59%	4.99	\$ 809.34	54.71	7.38%
Bonos Intern. 2041 Euros - Step up	GE41	09-jul-41	100.00%	51.05	13.36%	13.36%	09-ene-25	3.000%	Sem.	52%	6.13	\$ 1,572.60	47.60	7.25%
Bonos Intern. 2046 Euros - Step up	GE46	09-jul-46	100.00%	54.66	13.44%	13.44%	09-ene-25	3.750%	Sem.	55%	5.35	\$ 248.13	51.78	5.56%
Banco Central USD														
BOPREAL Serie 1A	BPOA7	30-abr-25	100.00%	94.01	20.16%	19.24%	30-abr-25	5.000%	Sem.	94%	0.39	\$ 996.00	93.93	0.09%
BOPREAL Serie 2	BPJ25	30-jun-25	66.67%	65.69	4.64%	4.64%	30-nov-24	0.000%	Mens.	99%	0.41	\$ 1,833.40	65.66	0.05%
BOPREAL Serie 1B	BPOB7	30-abr-26	100.00%	89.42	13.65%	13.21%	30-abr-25	5.000%	Sem.	89%	1.26	\$ 996.00	89.32	0.11%
BOPREAL Serie 3	BPY26	31-may-26	100.00%	90.21	11.68%	11.36%	30-nov-24	3.000%	Sem.	90%	1.20	\$ 892.00	88.69	1.71%
BOPREAL Serie 1C	BPOC7	30-abr-27	100.00%	85.00	12.63%	12.25%	30-abr-25	5.000%	Sem.	85%	2.08	\$ 1,494.00	84.69	0.37%
BOPREAL Serie 1D	BPOD7	31-oct-27	100.00%	84.56	12.18%	11.83%	30-abr-25	5.000%	Sem.	85%	2.28	\$ 1,494.00	83.73	0.99%
Provinciales														
Buenos Aires 2037A	BA37D	01-sep-37	96.34%	63.12	17.54%	16.83%	01-mar-25	6.625%	Sem.	62%	3.99	\$ 5,973.08	58.08	8.68%
Buenos Aires 2037B	BB37D	01-sep-37	100.00%	54.78	16.68%	16.04%	01-mar-25	5.875%	Sem.	54%	5.37	\$ 770.00	51.33	6.72%
Buenos Aires 2037C	BC37D	01-sep-37	100.00%	45.60	19.30%	18.45%	01-mar-25	5.250%	Sem.	45%	5.20	\$ 150.00	42.57	7.12%
Ciudad de Bs. As. 2027	CABA27	01-jun-27	100.00%	103.21	5.32%	5.25%	01-dic-24	7.500%	Sem.	103%	1.40	\$ 890.00	102.95	0.25%
Cordoba 2025	PDCAR25	10-dic-25	50.00%	97.42	11.96%	11.62%	10-dic-24	3.000%	Sem.	97%	0.51	\$ 339.50	97.70	-0.29%
Cordoba 2027	PDCAR27	01-jun-27	100.00%	93.63	11.29%	10.99%	01-dic-24	3.000%	Sem.	94%	1.56	\$ 494.00	93.52	0.12%
Cordoba 2029	PDCAR29	01-feb-29	100.00%	90.95	10.27%	10.02%	01-feb-25	3.000%	Sem.	91%	2.90	\$ 433.00	88.47	2.80%
Ciudad de Córdoba 2027	COROA27	29-sep-27	75.00%	82.78	21.52%	20.47%	29-mar-25	Step-up	Sem.	83%	1.31	\$ 421.50	79.48	4.15%
Mendoza 2029	PMM29	19-mar-29	69.23%	91.09	10.51%	10.25%	19-mar-25	2.750%	Sem.	91%	2.00	\$ 389.08	91.08	0.01%
Chubut 2030	CHUBT30	26-jul-30	60.33%	96.15	10.27%	9.89%	27-ene-25	7.750%	Trim.	96%	0.47	\$ 392.17	95.67	0.50%
Neuquen 2030 (No Garant)	NEU30A	27-abr-30	84.62%	93.31	9.85%	9.62%	27-abr-25	2.500%	Sem.	93%	2.46	\$ 309.69	93.19	0.13%
Neuquen 2030 (Garant)	NEU30M	12-may-30	67.77%	102.60	7.80%	7.58%	12-feb-25	5.170%	Sem.	103%	2.47	\$ 243.63	102.68	-0.08%
Santa Fe 2027	SFE27	01-nov-27	100.00%	94.74	10.20%	9.95%	01-may-25	6.900%	Sem.	95%	1.74	\$ 250.00	94.49	0.26%
Rio Negro 2028	PRN28	10-mar-28	77.78%	84.35	18.48%	17.70%	10-mar-25	2.750%	Sem.	85%	1.47	\$ 175.00	85.41	-1.24%
Tierra del fuego 2027	FUE27	17-abr-27	37.00%	97.94	11.03%	10.60%	17-ene-25	8.950%	Trim.	98%	1.24	\$ 75.90	97.79	0.15%



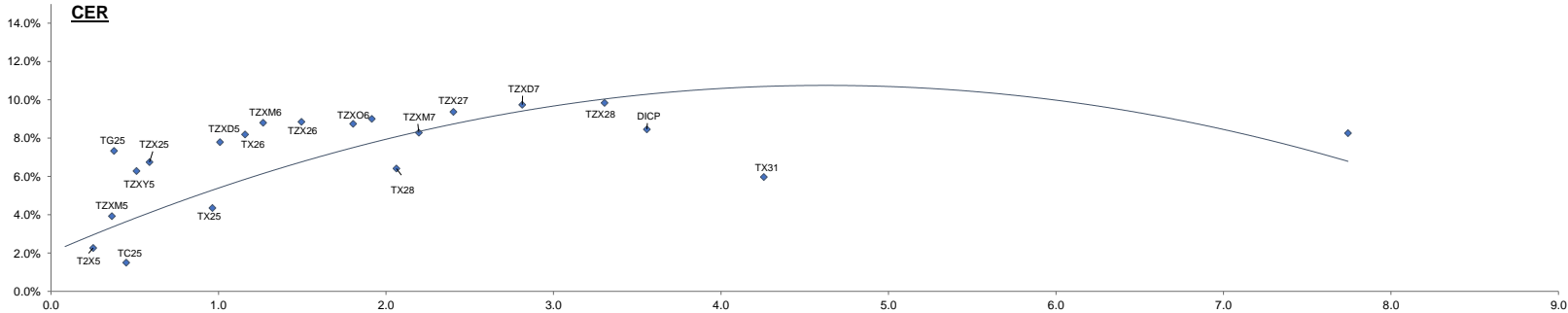
Bond	Ticker	Maturity	V.R. (%)	Price	TIR	TNA	Next coupon	Cupon	Frec	Parity	M Dur	Outstanding (MM)	31-oct	MoM	
Corporativos (cierre 08/11/2024)															
Alimentos y bebidas															
Cresud 2026	CRESUD26	03-mar-26	100.00%	103.28	5.43%	5.36%	03-ene-25	8.000%	Sem.	103%	1.20	\$	70.57	103.30	-0.02%
Mastellone 2026	MAST26	30-jun-26	100.00%	104.02	8.54%	8.28%	30-dic-24	10.950%	Trim.	104%	1.47	\$	110.87	104.27	-0.24%
Arcor 2027	ARCOR27	09-oct-27	85.72%	103.55	6.01%	5.93%	09-abr-25	8.250%	Sem.	104%	1.51	\$	109.67	103.55	0.00%
Bancos															
Galicia 2026	GALI2026	19-jul-26	100.00%	100.98	7.42%	7.29%	20-ene-25	8.250%	Sem.	101%	1.52	\$	250.00	101.03	-0.05%
Banco Macro 2026	BMA26	04-nov-26	100.00%	97.58	8.15%	7.99%	04-may-25	6.750%	Sem.	98%	1.81	\$	400.00	97.01	0.59%
Galicia 2028	GALI2028	10-oct-28	100.00%	102.60	7.09%	6.97%	10-abr-25	7.750%	Sem.	103%	3.32	\$	325.00	101.41	1.17%
Petróleo y Gas															
Cia Gral de Combustible 2025	CGC25	08-mar-25	33.50%	100.03	9.59%	9.37%	08-mar-25	9.500%	Sem.	100%	0.30	\$	68.44	100.53	-0.50%
Panamerican Energy 2025	PANA2025	21-jul-25	100.00%	100.21	7.01%	6.89%	21-ene-25	7.250%	Sem.	100%	0.65	\$	105.15	100.28	-0.07%
Panamerican Energy 2027	PANA2027	30-abr-27	100.00%	104.95	5.59%	5.52%	30-abr-25	9.125%	Sem.	105%	1.36	\$	300.00	104.99	-0.04%
Pampa Energia 2027	PAMPAR27	24-ene-27	100.00%	100.32	7.43%	7.30%	24-ene-25	7.500%	Sem.	100%	1.95	\$	750.00	100.07	0.25%
Capex 2028	CAPEX28	25-ago-28	100.00%	104.02	7.13%	7.01%	25-feb-25	9.250%	Sem.	104%	1.78	\$	188.80	103.62	0.39%
Pampa Energia 2029	PAMPAR29	15-abr-29	100.00%	103.69	8.27%	8.11%	15-abr-25	9.125%	Sem.	104%	3.58	\$	300.00	103.55	0.14%
YPF 2025	YPF2025	28-jul-25	100.00%	100.87	7.26%	7.13%	28-ene-25	8.500%	Sem.	101%	0.66	\$	1,131.77	100.53	0.34%
YPF2026 (Clase XVI)	YPF2026	12-feb-26	38.46%	100.99	7.84%	7.62%	12-feb-25	4.000%	Trim.	101%	0.71	\$	298.20	100.80	0.19%
YPF2029 (Clase XVII)	YPF2029	30-jun-29	100.00%	103.29	7.90%	7.75%	30-dic-24	9.000%	Sem.	103%	2.59	\$	747.00	103.33	-0.04%
YPF2029 (Clase I)	YPF2029I	27-jun-29	100.00%	102.41	8.00%	7.85%	27-dic-24	8.500%	Sem.	102%	3.67	\$	500.00	101.78	0.62%
Transportadora Gas del Sur 2031	TGS31	24-jul-31	100.00%	104.27	7.80%	7.66%	24-ene-25	8.500%	Sem.	104%	4.96	\$	490.00	103.89	0.37%
Pampa Energia 2031	PAMPAR31	10-sep-31	100.00%	101.41	7.82%	7.67%	10-mar-25	7.950%	Sem.	101%	5.14	\$	410.00	100.45	0.96%
YPF 2031	YPF2031	10-sep-31	100.00%	103.99	8.07%	7.91%	11-mar-25	8.750%	Sem.	104%	4.69	\$	500.00	102.40	1.55%
Panamerican Energy 2032	PANA2032	30-abr-32	100.00%	106.35	7.37%	7.24%	30-abr-25	8.500%	Sem.	106%	4.95	\$	400.00	105.69	0.62%
YPF Luz 2032	YPFL2032	16-oct-32	100.00%	98.70	8.28%	8.12%	16-abr-25	7.875%	Sem.	99%	5.21	\$	420.00	98.42	0.28%
YPF2033 (Clase XVIII)	YPF2033	30-sep-33	100.00%	96.90	7.69%	7.55%	30-mar-25	7.000%	Sem.	97%	5.57	\$	575.65	96.77	0.13%
YPF 2047	YPF2047	15-dic-47	100.00%	84.69	8.70%	8.52%	15-dic-24	7.000%	Sem.	85%	10.06	\$	750.00	84.08	0.73%
Utilidades															
Genneia 2027	GNNEIA27	02-sep-27	60.00%	101.28	7.98%	7.82%	02-mar-25	8.750%	Sem.	101%	1.39	\$	219.67	101.19	0.09%
Otros															
Telecom 2025	TECO25	06-ago-25	34.00%	100.57	7.75%	7.61%	06-feb-25	8.500%	Sem.	101%	0.68	\$	112.37	100.73	-0.16%
Aeropuertos Argentina 2000	AEROAR27	01-feb-27	37.50%	99.65	7.35%	7.16%	03-feb-25	9.375%	Trim.	100%	1.14	\$	114.75	99.65	0.00%
Telecom 2031	TECO31	18-jul-31	100.00%	103.94	8.77%	8.59%	18-ene-25	9.500%	Sem.	104%	4.23	\$	617.22	103.56	0.37%
Aeropuertos Argentina 2000	AEROAR31	01-ago-31	100.00%	104.51	7.53%	7.33%	01-feb-25	8.500%	Trim.	104%	3.79	\$	272.95	104.49	0.02%



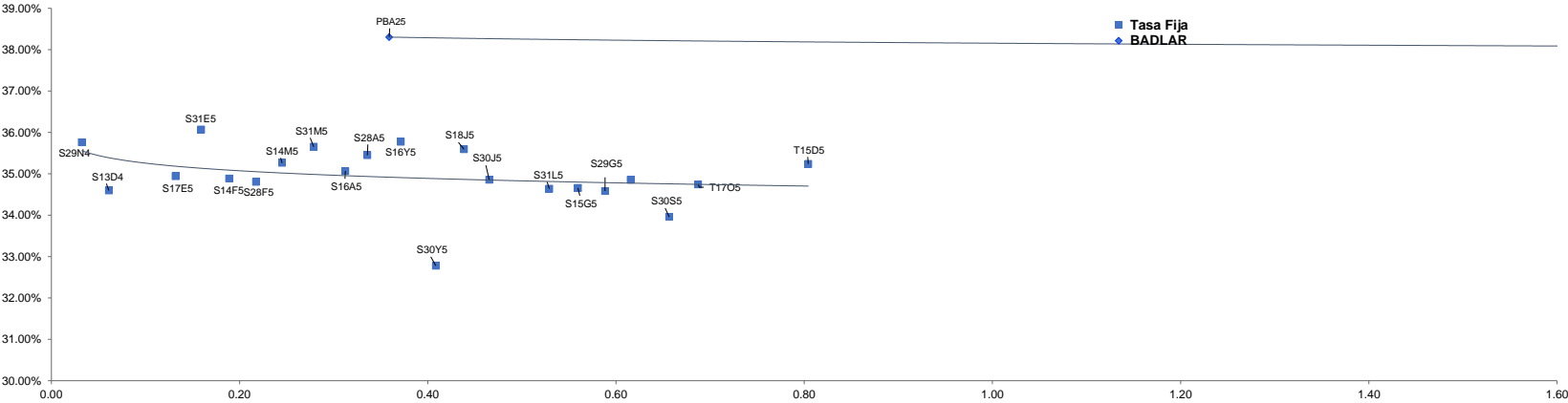
Fixed Income Research

Dólar	998.750
LeFi	35.00%
Badlar Priv.	35.500%
CER	494.208
SOFR	4.60%

Bond														
Ajustables por CER (*)	Ticker	Maturity	V.R. (%)	Price	TIR	TNA	Next coupon	Cupon	Frec	Parity	M Dur	Outstanding (MM)	31-oct	MoM
Bono Dual 11/2024	TDN24	29-nov-24	100.00%	122,400.00	110.05%	75.44%	29-nov-24	Fijo 3.25%	Sem.	97%	0.02	\$ 11,085.52	122,400.00	0.00%
Bono del Tesoro CER 12/2024	TSX4	13-dic-24	100.00%	498.40	-3.96%	-4.00%	13-dic-24	Fija 4.25%	Sem.	101%	0.08	\$ 219,283.00	489.25	1.87%
Bono Dual 01/2025	TDE25	31-ene-25	100.00%	125,590.00	-2.56%	-2.59%	31-ene-25	Fijo 3.25%	Sem.	101%	0.22	\$ 8,596.00	122,000.00	2.94%
Bono del Tesoro CER 02/2025	TX25	14-feb-25	100.00%	608.30	2.28%	2.27%	14-feb-25	Fija 4.25%	Sem.	100%	0.25	\$ 2,723,001.00	591.00	2.93%
Bono del Tesoro CER 03/2025	TZXM5	31-mar-25	100.00%	132.70	3.98%	3.93%	31-mar-25	Fijo 0%	Sem.	99%	0.36	\$ 298,559.00	128.10	3.59%
BONCER 2025	TC25	27-abr-25	100.00%	5,440.00	1.51%	1.50%	27-abr-25	Fija 4%	Sem.	101%	0.45	\$ 29,098.00	5,210.00	4.41%
Bono del Tesoro CER 05/2025	TZXY5	30-may-25	100.00%	98.00	6.37%	6.28%	30-may-25	Fijo 0%	Sem.	97%	0.51	\$ 365,935.00	94.40	3.81%
Bono del Tesoro CER 06/2025	TZ25	30-jun-25	100.00%	191.15	6.83%	6.75%	30-jun-25	Fijo 0%	Sem.	96%	0.59	\$ 1,611,109.00	184.40	3.66%
Bono del Tesoro CER 08/2025	TG25	23-ago-25	100.00%	499.00	7.47%	7.33%	23-ago-25	Fijo 0%	Sem.	97%	0.38	\$ 633,272.50	505.00	-1.19%
Bono del Tesoro CER 11/2025	TX25	09-nov-25	100.00%	1,027.50	4.40%	4.35%	09-may-25	Fija 1.80%	Sem.	98%	0.96	\$ 266,785.00	974.00	5.49%
Bono del Tesoro CER 12/2025	TZXD5	15-dic-25	100.00%	165.50	7.76%	7.79%	15-dic-25	Fijo 0%	-	92%	1.01	\$ 7,593,347.00	157.00	5.41%
Bono del Tesoro CER 03/2026	TZXM6	31-mar-26	100.00%	128.75	8.67%	8.81%	31-mar-26	Fijo 0%	Sem.	89%	1.27	\$ 1,173,279.00	122.75	4.89%
Bono del Tesoro CER 06/2026	TZ26	30-jun-26	100.00%	212.25	8.62%	8.85%	30-jun-26	Fijo 0%	-	87%	1.50	\$ 3,346,252.00	202.00	5.07%
Bono del Tesoro CER 10/2026	TZXO6	30-jun-26	100.00%	86.50	8.41%	8.75%	30-oct-26	Fijo 0%	-	85%	1.80	\$ 430,947.00	80.00	8.13%
Bono del Tesoro CER 2026	TX26	09-nov-26	80.00%	1,605.00	8.36%	8.19%	09-may-25	Fija 2.00%	Sem.	93%	1.16	\$ 268,669.60	1,972.00	-18.61%
Bono del Tesoro CER 12/2026	TZXD6	15-dic-26	100.00%	151.10	8.61%	9.01%	15-dic-26	Fijo 0%	-	84%	1.92	\$ 14,424,781.00	142.50	6.04%
Bono del Tesoro CER 03/2027	TZXM7	31-mar-27	100.00%	112.50	7.86%	8.29%	31-mar-27	Fijo 0%	-	84%	2.20	\$ 354,291.00	107.00	5.14%
Bono del Tesoro CER 06/2027	TZX27	30-jun-27	100.00%	194.85	8.74%	9.37%	30-jun-27	Fijo 0%	-	80%	2.40	\$ 2,547,611.00	183.00	6.48%
Bono del Tesoro CER 06/2027	TZXD7	15-dic-27	100.00%	138.00	8.89%	9.74%	15-dic-27	Fijo 0%	-	77%	2.81	\$ 11,944,821.00	130.50	5.75%
Bono del Tesoro CER 12/2028	TZX28	30-jun-28	100.00%	178.90	8.78%	9.84%	30-jun-28	Fijo 0%	-	74%	3.30	\$ 6,677,647.00	168.25	6.33%
Bono del Tesoro CER 11/2028	TX28	09-nov-28	80.00%	1,582.00	6.52%	6.41%	09-may-25	Fija 2.25%	-	115%	2.06	\$ 53,137.05	1,684.50	-6.08%
Bono del Tesoro CER 2031	TX31	30-nov-31	100.00%	895.00	6.06%	5.97%	30-nov-24	Fija 2.5%	Sem.	86%	4.26	\$ 45,562.00	775.00	15.48%
Discount \$ Ley Arg.	DICP	31-dic-33	95.00%	37,520.00	8.64%	8.46%	31-dic-24	Fija 5.83%	Sem.	91%	3.56	\$ 9,948.86	35,825.00	4.73%
PAR \$ Ley Arg.	PARP	31-dic-38	100.00%	20,200.00	8.43%	8.26%	31-mar-25	1.77%	Sem.	61%	7.74	\$ 2,858.00	17,920.00	12.72%
Tasa Fija	Ticker	Maturity	V.R. (%)	Price	TIR	TNA	Next coupon	Cupon	TEM	Parity	M Dur	Outstanding (MM)	31-oct	MoM
Letra del Tesoro Capitalizable	S29N4	29-nov-24	100.00%	132.90	42.59%	35.76%	29-nov-24	0.00%	2.96%	58%	0.03	\$ 1,121,471.00	130.95	1.49%
Letra del Tesoro Capitalizable	S13D4	13-dic-24	100.00%	123.33	40.63%	34.60%	13-dic-24	0.00%	2.84%	123%	0.06	\$ 4,129,433.00	121.18	1.77%
Letra del Tesoro Capitalizable	S17E5	17-ene-25	100.00%	123.50	40.35%	34.94%	17-ene-25	0.00%	2.83%	124%	0.13	\$ 1,289,957.00	120.90	2.15%
Letra del Tesoro Capitalizable	S31E5	31-ene-25	100.00%	160.15	41.53%	36.07%	31-ene-25	0.00%	2.90%	139%	0.16	\$ 2,057,497.00	156.70	2.20%
Letra del Tesoro Capitalizable	S14F5	14-feb-25	100.00%	111.34	39.69%	34.89%	14-feb-25	0.00%	2.79%	111%	0.19	\$ 1,422,200.00	108.55	2.57%
Letra del Tesoro Capitalizable	S28F5	28-feb-25	100.00%	143.70	39.07%	34.80%	28-feb-25	0.00%	2.75%	91%	0.22	\$ 1,127,251.00	139.62	2.92%
Letra del Tesoro Capitalizable	S14M5	14-mar-25	100.00%	112.78	39.59%	35.26%	14-mar-25	0.00%	2.78%	113%	0.25	\$ 800,646.00	110.00	2.53%
Letra del Tesoro Capitalizable	S31M5	31-mar-25	100.00%	137.10	39.72%	35.65%	31-mar-25	0.00%	2.79%	56%	0.28	\$ 611,614.00	132.55	3.43%
Letra del Tesoro Capitalizable	S16A5	16-abr-25	100.00%	114.30	38.68%	35.07%	16-abr-25	0.00%	2.72%	114%	0.31	\$ 995,916.00	110.60	3.35%
Letra del Tesoro Capitalizable	S28A5	28-abr-25	100.00%	112.65	38.91%	35.45%	28-abr-25	0.00%	2.74%	113%	0.34	\$ 989,880.00	108.60	3.73%
Letra del Tesoro Capitalizable	S16Y5	16-may-25	100.00%	115.95	38.94%	35.77%	16-may-25	0.00%	2.74%	116%	0.37	\$ 717,552.00	111.90	3.62%
Letra del Tesoro Capitalizable	S30Y5	30-may-25	100.00%	115.75	35.21%	32.78%	30-may-25	0.00%	2.51%	116%	0.41	\$ 313,776.00	109.60	5.61%
Letra del Tesoro Capitalizable	S18J5	18-jun-25	100.00%	121.90	38.11%	35.59%	18-jun-25	0.00%	2.69%	122%	0.44	\$ 1,588,543.21	116.35	4.77%
Letra del Tesoro Capitalizable	S30J5	30-jun-25	100.00%	120.30	37.06%	34.86%	30-jun-25	0.00%	2.62%	120%	0.47	\$ 917,336.00	114.11	5.42%
Letra del Tesoro Capitalizable	S31L5	31-jul-25	100.00%	116.40	36.29%	34.64%	31-jul-25	0.00%	2.58%	119%	0.53	\$ 332,567.00	112.00	5.80%
Letra del Tesoro Capitalizable	S15G5	15-ago-25	100.00%	116.50	36.06%	34.66%	15-ago-25	0.00%	2.56%	116%	0.56	\$ 746,933.00	109.34	6.46%
Letra del Tesoro Capitalizable	S29G5	29-ago-25	100.00%	123.80	35.75%	34.58%	29-ago-25	0.00%	2.54%	124%	0.59	\$ 1,063,900.00	116.30	6.45%
Letra del Tesoro Capitalizable	S12S5	12-sep-25	100.00%	123.30	35.82%	34.86%	12-sep-25	0.00%	2.55%	123%	0.62	\$ 828,692.00	115.70	6.57%
Letra del Tesoro Capitalizable	S30S5	30-sep-25	100.00%	123.00	34.60%	33.96%	30-sep-25	0.00%	2.47%	123%	0.66	\$ 457,562.00	114.97	6.98%
Bono del Tesoro Capitalizable	T17O5	17-oct-25	100.00%	120.20	35.15%	34.74%	17-oct-25	0.00%	2.51%	120%	0.69	\$ 674,297.00	112.30	7.03%
Letra del Tesoro Capitalizable	T15D5	15-dic-25	100.00%	123.50	34.76%	35.24%	15-dic-25	0.00%	2.48%	124%	0.80	\$ 1,084,427.00	114.25	8.10%
Bote 10/2026	TO26	18-oct-26	100.00%	79.80	33.29%	30.90%	17-abr-25	Fija 15.50%	2.39%	79%	1.47	\$ 96,569.71	74.40	7.26%
Tasa Variable	Ticker	Maturity	V.R. (%)	Price	TIR	TNA	Next coupon	Cupon	Frec	Parity	M Dur	Outstanding (MM)	31-oct	MoM
Ciudad de Buenos Aires 2028	BDC28	31-ene-25	100.00%	112.00	43.87%	38.08%	22-nov-24	Badlar + 375pbs	Trim.	102%	1.66	\$ 13,262.47	110.80	1.08%
Provincia de Buenos Aires 2025	PBA25	12-abr-25	0.00%	103.90	44.16%	38.30%	13-ene-25	Badlar + 375pbs	Trim.	101%	0.36	\$ -	102.60	1.27%
Dollar Linked	Ticker	Maturity	V.R. (%)	Price	TIR	TNA	Next coupon	Cupon	Frec	Parity	M Dur	Outstanding (MM)	31-oct	MoM
Bono Dual 11/2024	TDN24	29-nov-24	100.00%	122,400.00	-99.03%	-419.81%	29-nov-24	0.00%	-	123%	-0.01	\$ 11,085.52	122,400.00	0.00%
Bono Dual 01/2025	TDE25	31-ene-25	100.00%	125,590.00	-65.30%	-94.60%	31-ene-25	0.00%	-	126%	4.01	\$ 8,596.00	122,000.00	2.94%
Bote vinculado al Dólar 03/2025	TV25	30-mar-25	100.00%	99,990.00	0.36%	0.36%	30-mar-25	0.50%	Sem.	100%	0.37	\$ 329.00	97,880.00	2.16%
Bono del Tesoro vinculado al Dólar 06/2025	TZV25	30-jun-25	100.00%	97,000.00	2.21%	4.72%	30-jun-25	0.00%	-	97%	0.64	\$ 1,763.00	95,100.00	2.00%
Bono del Tesoro vinculado al Dólar 12/2025	TZVD5	15-dic-25	100.00%	95,000.00	4.71%	4.72%	30-jun-25	0.00%	-	95%	1.10	\$ 324.00	92,000.00	3.26%
Bono del Tesoro vinculado al Dólar 06/2026	TZV26	30-jun-26	100.00%	88,502.52	7.71%	7.90%	30-jun-26	0.00%	-	89%	1.63	\$ 383.00	86,000.00	2.91%



Curva Pesos



DISCLAIMER

Este informe ha sido elaborado a título informativo. El presente NO debe ser tomado como una recomendación o instrucción, y no reviste carácter de ofertas de productos y/o servicios ni solicitud de orden de compra y/o venta. Banco CMF S.A. no será responsable por ningún error y/u omisión del contenido.