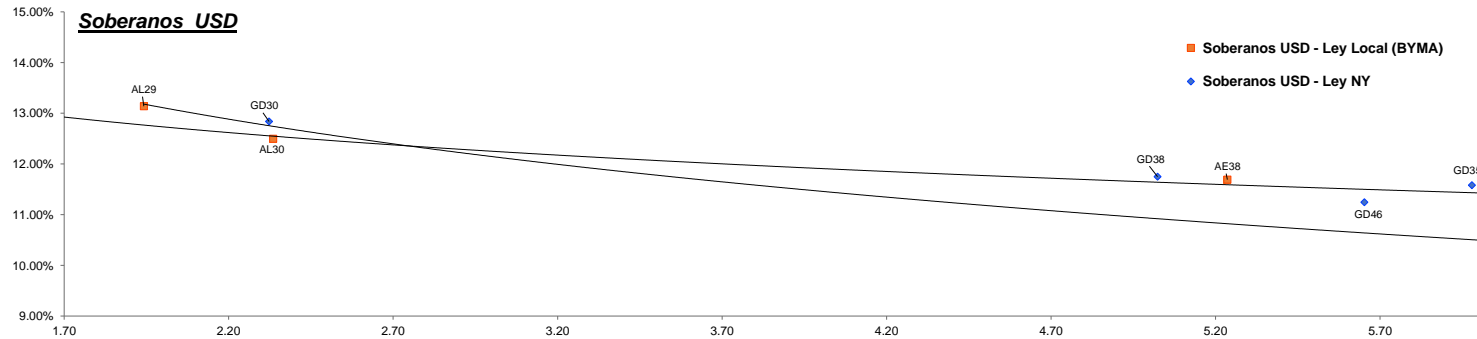


Fixed Income Research

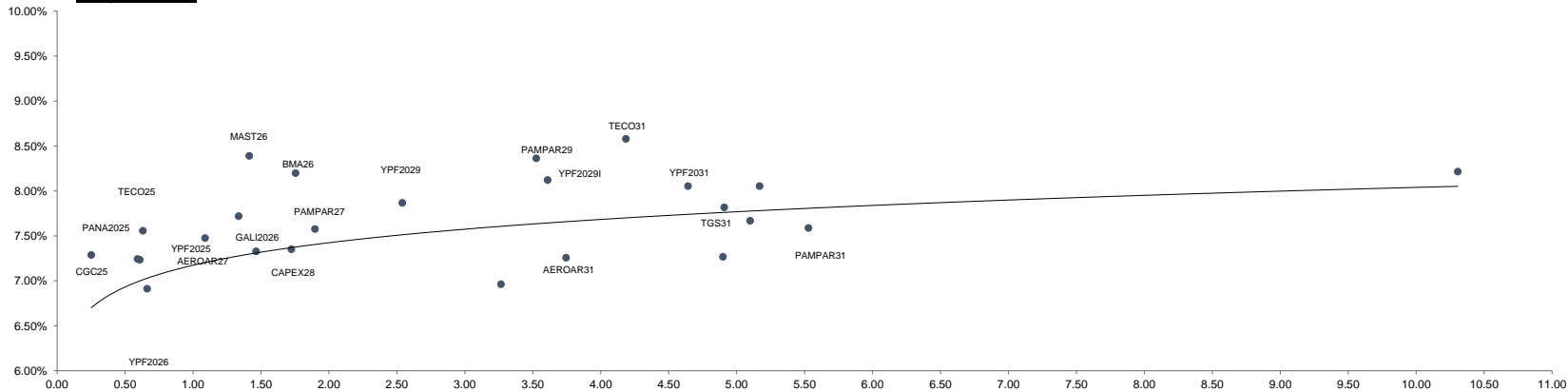
Bond	Ticker	Maturity	V.R. (%)	Price	TIR	TNA	Next coupon	Cupon	Frec	Parity	M Dur	Outstanding (MM)	29-nov	MoM
Soberanos USD														
Bonos Intern. 2029 Ley N.Y. - Step up	GD29	09-jul-29	100.00%	77.91	13.11%	12.71%	09-ene-25	1.000%	Sem.	78%	1.69	\$ 2,635.03	77.77	0.18%
Bonos Intern. 2030 Ley N.Y. - Step up	GD30	09-jul-30	96.00%	73.95	13.25%	12.84%	09-ene-25	0.750%	Sem.	74%	2.32	\$ 15,446.99	73.83	0.16%
Bonos Intern. 2035 Ley N.Y. - Step up	GD35	09-jul-35	100.00%	63.51	11.92%	11.58%	09-ene-25	4.125%	Sem.	64%	5.98	\$ 20,501.72	63.45	0.09%
Bonos Intern. 2038 Ley N.Y. - Step up	GD38	09-ene-38	100.00%	67.50	12.09%	11.75%	09-ene-25	5.000%	Sem.	68%	5.02	\$ 11,405.07	67.46	0.06%
Bonos Intern. 2041 Ley N.Y. - Step up	GD41	09-jul-41	100.00%	59.50	11.63%	11.31%	09-ene-25	3.500%	Sem.	60%	6.24	\$ 10,482.11	59.57	-0.12%
Bonos Intern. 2046 Ley N.Y. - Step up	GD46	09-jul-46	100.00%	63.57	11.56%	11.24%	09-ene-25	4.125%	Sem.	64%	5.65	\$ 2,092.00	63.57	0.00%
BONAR 2029 - step up (BYMA)	AL29	09-jul-29	100.00%	77.26	13.57%	13.14%	09-ene-25	1.000%	Sem.	77%	1.94	\$ 1,394.90	77.22	0.05%
BONAR 2030 - step up (BYMA)	AL30	09-jul-30	96.00%	74.54	12.89%	12.50%	09-ene-25	0.750%	Sem.	75%	2.34	\$ 13,038.05	73.67	1.18%
BONAR 2035 - step up (BYMA)	AL35	09-jul-35	100.00%	65.34	11.43%	11.13%	09-ene-25	4.125%	Sem.	66%	6.10	\$ 10,151.85	65.13	0.32%
BONAR 2038 - step up (BYMA)	AE38	09-ene-38	100.00%	67.71	12.03%	11.69%	09-ene-25	5.000%	Sem.	68%	5.24	\$ 7,231.45	68.15	-0.65%
BONAR 2041 - step up (BYMA)	AL41	09-jul-41	100.00%	70.00	9.12%	8.92%	09-ene-25	3.500%	Sem.	70%	6.87	\$ 1,542.23	61.07	14.62%
Soberanos Euros														
Bonos Intern. 2029 Euros - Step up	GE29	09-jul-29	100.00%	74.12	15.19%	14.65%	09-ene-25	0.500%	Sem.	74%	1.66	\$ 90.39	73.86	0.35%
Bonos Intern. 2030 Euros - Step up	GE30	09-jul-30	96.00%	70.70	14.12%	13.65%	09-ene-25	0.125%	Sem.	71%	2.07	\$ 1,118.97	70.49	0.30%
Bonos Intern. 2035 Euros - Step up	GE35	09-jul-35	100.00%	58.80	12.29%	11.93%	09-ene-25	3.875%	Sem.	59%	6.03	\$ 298.80	58.74	0.10%
Bonos Intern. 2038 Euros - Step up	GE38	09-ene-38	100.00%	62.19	12.62%	12.25%	09-ene-25	4.250%	Sem.	63%	5.07	\$ 809.34	61.81	0.61%
Bonos Intern. 2041 Euros - Step up	GE41	09-jul-41	100.00%	55.68	12.01%	11.66%	09-ene-25	3.000%	Sem.	56%	6.31	\$ 1,572.60	55.57	0.20%
Bonos Intern. 2046 Euros - Step up	GE46	09-jul-46	100.00%	58.33	12.27%	11.92%	09-ene-25	3.750%	Sem.	59%	5.58	\$ 248.13	58.19	0.24%
Banco Central USD														
BOPREAL Serie 1A	BPOA7	30-abr-25	100.00%	93.44	24.13%	22.83%	30-abr-25	5.000%	Sem.	93%	0.33	\$ 996.00	92.85	0.64%
BOPREAL Serie 2	BPJ25	30-jun-25	58.33%	59.68	-6.61%	-6.61%	31-dic-24	0.000%	Mens.	102%	0.41	\$ 1,833.40	58.80	1.50%
BOPREAL Serie 1B	BPOB7	30-abr-26	100.00%	89.57	13.83%	13.39%	30-abr-25	5.000%	Sem.	90%	1.21	\$ 996.00	89.48	0.10%
BOPREAL Serie 3	BPY26	31-may-26	100.00%	91.42	10.86%	10.58%	28-feb-25	3.000%	Sem.	91%	1.16	\$ 892.00	91.25	0.19%
BOPREAL Serie 1C	BPOC7	30-abr-27	100.00%	84.74	12.94%	12.54%	30-abr-25	5.000%	Sem.	85%	2.02	\$ 1,494.00	84.26	0.57%
BOPREAL Serie 1D	BPOD7	31-oct-27	100.00%	84.64	12.27%	11.92%	30-abr-25	5.000%	Sem.	85%	2.22	\$ 1,494.00	84.08	0.67%
Provinciales														
Buenos Aires 2037A	BA37D	01-sep-37	96.34%	65.70	16.03%	15.43%	03-mar-25	6.625%	Sem.	66%	4.10	\$ 5,973.08	64.89	1.25%
Buenos Aires 2037B	BB37D	01-sep-37	100.00%	57.77	15.30%	14.76%	01-mar-25	5.875%	Sem.	58%	5.48	\$ 770.00	57.16	1.07%
Buenos Aires 2037C	BC37D	01-sep-37	100.00%	46.69	18.44%	17.66%	01-mar-25	5.250%	Sem.	47%	5.24	\$ 150.00	46.62	0.15%
Ciudad de Bs. As. 2027	CABA27	01-jun-27	100.00%	99.73	7.85%	7.70%	01-jun-25	7.500%	Sem.	100%	1.36	\$ 890.00	99.73	0.00%
Cordoba 2025	PDCAR25	10-dic-25	50.00%	98.19	10.77%	10.50%	10-dic-24	3.000%	Sem.	98%	0.47	\$ 339.50	98.33	-0.14%
Cordoba 2027	PDCAR27	01-jun-27	100.00%	93.69	11.42%	11.11%	01-jun-25	3.000%	Sem.	94%	1.56	\$ 494.00	93.70	-0.01%
Cordoba 2029	PDCAR29	01-feb-29	100.00%	91.82	9.97%	9.73%	01-feb-25	3.000%	Sem.	92%	2.86	\$ 433.00	91.84	-0.02%
Ciudad de Córdoba 2027	COROA27	29-sep-27	75.00%	82.91	21.91%	20.83%	29-mar-25	Step-up	Sem.	83%	1.25	\$ 421.50	82.91	0.00%
Mendoza 2029	PMM29	19-mar-29	69.23%	91.81	10.20%	9.95%	19-mar-25	2.750%	Sem.	92%	1.95	\$ 389.08	91.81	0.00%
Chubut 2030	CHUBT30	26-jul-30	60.33%	96.26	10.25%	9.88%	27-ene-25	7.750%	Trim.	96%	0.44	\$ 392.17	96.13	0.14%
Neuquen 2030 (No Garant)	NEU30A	27-abr-30	84.62%	94.46	9.37%	9.16%	27-abr-25	2.500%	Sem.	94%	2.43	\$ 309.69	94.57	-0.12%
Neuquen 2030 (Garant)	NEU30M	12-may-30	67.77%	102.76	7.70%	7.49%	12-feb-25	5.170%	Sem.	103%	2.42	\$ 243.63	102.78	-0.02%
Santa Fe 2027	SFE27	01-nov-27	100.00%	95.09	10.05%	9.81%	01-may-25	6.900%	Sem.	95%	1.69	\$ 250.00	95.13	-0.04%
Rio Negro 2028	PRN28	10-mar-28	77.78%	83.51	19.62%	18.74%	10-mar-25	2.750%	Sem.	84%	1.40	\$ 175.00	83.51	0.00%
Tierra del fuego 2027	FUE27	17-abr-27	37.00%	97.45	11.55%	11.08%	17-ene-25	8.950%	Trim.	97%	1.18	\$ 75.90	97.39	0.06%



Fixed Income Research

Bond	Ticker	Maturity	V.R. (%)	Price	TIR	TNA	Next coupon	Cupon	Frec	Parity	M Dur	Outstanding (MM)	29-nov	MoM
Corporativos														
Alimentos y bebidas														
Cresud 2026	CRESUD26	03-mar-26	100.00%	103.29	5.31%	5.24%	03-ene-25	8.000%	Sem.	103%	1.14	\$ 70.57	103.46	-0.16%
Mastellone 2026	MAST26	30-jun-26	100.00%	104.10	8.39%	8.14%	30-dic-24	10.950%	Trim.	104%	1.41	\$ 110.87	103.81	0.28%
Arcor 2027	ARCOR27	09-oct-27	85.72%	103.69	5.84%	5.75%	09-abr-25	8.250%	Sem.	104%	1.46	\$ 109.67	103.68	0.01%
Bancos														
Galicia 2026	GALI2026	19-jul-26	100.00%	101.08	7.33%	7.20%	20-ene-25	8.250%	Sem.	101%	1.46	\$ 250.00	101.24	-0.16%
Banco Macro 2026	BMA26	04-nov-26	100.00%	97.55	8.20%	8.04%	04-may-25	6.750%	Sem.	98%	1.75	\$ 400.00	97.59	-0.04%
Galicia 2028	GALI2028	10-oct-28	100.00%	102.97	6.96%	6.85%	10-abr-25	7.750%	Sem.	103%	3.27	\$ 325.00	103.11	-0.14%
Petróleo y Gas														
Cia Gral de Combustible 2025	CGC25	08-mar-25	33.50%	100.58	7.29%	7.16%	08-mar-25	9.500%	Sem.	101%	0.25	\$ 68.44	100.43	0.15%
Panamerican Energy 2025	PANA2025	21-jul-25	100.00%	100.05	7.24%	7.12%	21-ene-25	7.250%	Sem.	100%	0.59	\$ 105.15	100.05	0.00%
Panamerican Energy 2027	PANA2027	30-abr-27	100.00%	104.30	5.94%	5.85%	30-abr-25	9.125%	Sem.	104%	1.30	\$ 300.00	104.49	-0.18%
Pampa Energia 2027	PAMPAR27	24-ene-27	100.00%	100.04	7.58%	7.44%	24-ene-25	7.500%	Sem.	100%	1.90	\$ 750.00	100.09	-0.05%
Capex 2028	CAPEX28	25-ago-28	100.00%	103.52	7.35%	7.22%	25-feb-25	9.250%	Sem.	103%	1.72	\$ 188.80	103.35	0.16%
Pampa Energia 2029	PAMPAR29	15-abr-29	100.00%	103.31	8.36%	8.20%	15-abr-25	9.125%	Sem.	103%	3.53	\$ 300.00	103.35	-0.04%
YPF 2025	YPF2025	28-jul-25	100.00%	100.81	7.23%	7.11%	28-ene-25	8.500%	Sem.	101%	0.61	\$ 1,131.77	100.77	0.04%
YPF2026 (Clase XVI)	YPF2026	12-feb-26	38.46%	101.50	6.91%	6.74%	12-feb-25	4.000%	Trim.	101%	0.66	\$ 298.20	101.32	0.18%
YPF2029 (Clase XVII)	YPF2029	30-jun-29	100.00%	103.33	7.87%	7.72%	30-dic-24	9.000%	Sem.	103%	2.54	\$ 747.00	103.78	-0.43%
YPF2029 (Clase I)	YPF2029I	27-jun-29	100.00%	101.94	8.12%	7.96%	27-dic-24	8.500%	Sem.	102%	3.61	\$ 500.00	101.92	0.02%
Transportadora Gas del Sur 2031	TGS31	24-jul-31	100.00%	104.17	7.82%	7.67%	24-ene-25	8.500%	Sem.	104%	4.91	\$ 490.00	104.29	-0.12%
Pampa Energia 2031	PAMPAR31	10-sep-31	100.00%	102.16	7.67%	7.53%	10-mar-25	7.950%	Sem.	102%	5.10	\$ 410.00	102.30	-0.14%
YPF 2031	YPF2031	10-sep-31	100.00%	104.02	8.05%	7.90%	11-mar-25	8.750%	Sem.	104%	4.64	\$ 500.00	104.45	-0.41%
Panamerican Energy 2032	PANA2032	30-abr-32	100.00%	106.82	7.27%	7.14%	30-abr-25	8.500%	Sem.	107%	4.90	\$ 400.00	107.01	-0.18%
YPF Luz 2032	YPFL2032	16-oct-32	100.00%	99.82	8.05%	7.90%	16-abr-25	7.875%	Sem.	100%	5.17	\$ 420.00	100.10	-0.28%
YPF2033 (Clase XVIII)	YPF2033	30-sep-33	100.00%	97.46	7.59%	7.45%	30-mar-25	7.000%	Sem.	97%	5.53	\$ 575.65	98.28	-0.83%
YPF 2047	YPF2047	15-dic-47	100.00%	88.94	8.22%	8.05%	15-dic-24	7.000%	Sem.	89%	10.31	\$ 750.00	89.38	-0.49%
Utilidades														
Genneia 2027	GNNEIA27	02-sep-27	60.00%	101.57	7.72%	7.58%	02-mar-25	8.750%	Sem.	102%	1.34	\$ 219.67	101.43	0.14%
Otros														
Telecom 2025	TECO25	06-ago-25	34.00%	100.64	7.56%	7.42%	06-feb-25	8.500%	Sem.	101%	0.63	\$ 112.37	100.64	0.00%
Aeropuertos Argentina 2000	AEROAR27	01-feb-27	37.50%	99.53	7.48%	7.28%	03-feb-25	9.375%	Trim.	100%	1.09	\$ 114.75	99.51	0.02%
Telecom 2031	TECO31	18-jul-31	100.00%	104.73	8.58%	8.40%	18-ene-25	9.500%	Sem.	105%	4.18	\$ 617.22	104.90	-0.16%
Aeropuertos Argentina 2000	AEROAR31	01-ago-31	100.00%	105.47	7.26%	7.07%	01-feb-25	8.500%	Trim.	105%	3.75	\$ 272.95	104.89	0.55%

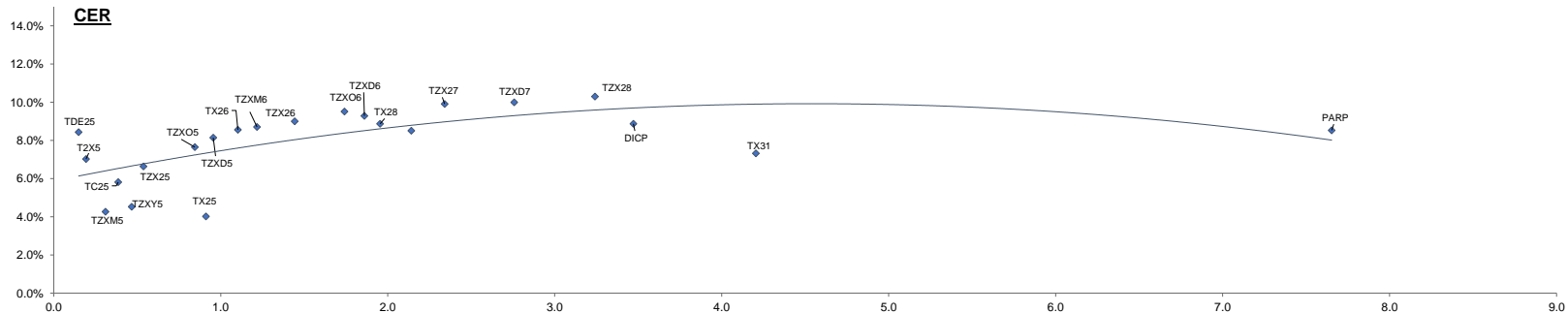
Corporativos



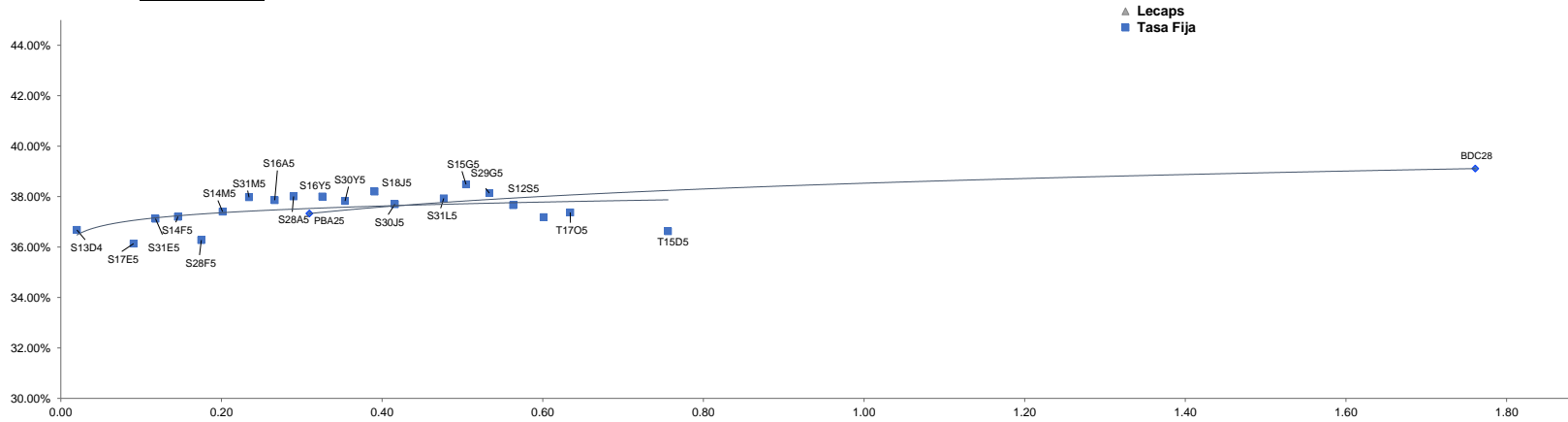
Fixed Income Research

Dólar	1011.92
LeFi	35.00%
Badlar Priv.	36.400%
CER	503.399
SOFR	4.59%

Bond														
Ajustables por CER (*)	Ticker	Maturity	V.R. (%)	Price	TIR	TNA	Next coupon	Cupon	Frec	Parity	M Dur	Outstanding (MM)	29-nov	MoM
Bono del Tesoro CER 12/2024	T5X4	13-dic-24	100.00%	507.30	45.50%	41.25%	13-dic-24	Fija 4.25%	Sem.	99%	0.02	\$ 219,283.00	506.70	0.12%
Bono Dual 01/2025	TDE25	31-ene-25	100.00%	126,000.00	8.74%	8.43%	31-ene-25	Fijo 3.25%	Sem.	99%	0.15	\$ 8,596.00	126,500.00	-0.40%
Bono del Tesoro CER 02/2025	T2X5	14-feb-25	100.00%	617.10	7.14%	7.02%	14-feb-25	Fija 4.25%	Sem.	99%	0.19	\$ 2,723,001.00	617.30	-0.03%
Bono del Tesoro CER 03/2025	TZXM5	31-mar-25	100.00%	135.85	4.33%	4.27%	31-mar-25	Fijo 0%	Sem.	99%	0.31	\$ 298,559.00	135.90	-0.04%
BONCER 2025	TC25	27-abr-25	100.00%	5,475.00	5.90%	5.81%	27-abr-25	Fija 4%	Sem.	99%	0.39	\$ 29,098.00	5,479.00	-0.07%
Bono del Tesoro CER 05/2025	TZXY5	30-may-25	100.00%	101.40	4.58%	4.53%	30-may-25	Fijo 0%	Sem.	98%	0.47	\$ 504,865.00	100.50	0.90%
Bono del Tesoro CER 06/2025	TZX25	30-jun-25	100.00%	196.30	6.73%	6.63%	30-jun-25	Fijo 0%	Sem.	96%	0.54	\$ 1,611,109.00	196.65	-0.18%
Bono del Tesoro CER 10/2025	TZXO5	09-nov-25	100.00%	96.90	7.67%	7.64%	09-nov-25	Fijo 0%	Sem.	93%	0.84	\$ 157,190.00	98.25	-1.37%
Bono del Tesoro CER 11/2025	TX25	09-nov-25	100.00%	1,056.50	4.06%	4.02%	09-may-25	Fija 1.80%	Sem.	98%	0.91	\$ 266,785.00	1,056.00	0.05%
Bono del Tesoro CER 12/2025	TZXD5	15-dic-25	100.00%	169.35	8.13%	8.14%	15-dic-25	Fijo 0%	-	92%	0.96	\$ 7,593,347.00	169.00	0.21%
Bono del Tesoro CER 03/2026	TZXM6	31-mar-26	100.00%	132.40	8.59%	8.70%	31-mar-26	Fijo 0%	Sem.	90%	1.22	\$ 1,916,403.00	132.05	0.27%
Bono del Tesoro CER 06/2026	TZX26	30-jun-26	100.00%	217.55	8.78%	9.00%	30-jun-26	Fijo 0%	-	88%	1.44	\$ 3,346,252.00	218.00	-0.21%
Bono del Tesoro CER 10/2026	TZXO6	30-jun-26	100.00%	87.73	9.13%	9.51%	30-oct-26	Fijo 0%	-	85%	1.74	\$ 1,061,427.00	88.75	-1.15%
Bono del Tesoro CER 2026	TX26	09-nov-26	80.00%	1,642.00	8.74%	8.55%	09-may-25	Fija 2.00%	Sem.	93%	1.10	\$ 268,669.60	1,640.00	0.12%
Bono del Tesoro CER 12/2026	TZXD6	15-dic-26	100.00%	154.45	8.87%	9.28%	15-dic-26	Fijo 0%	-	84%	1.86	\$ 14,424,781.00	154.60	-0.10%
Bono del Tesoro CER 03/2027	TZXM7	31-mar-27	100.00%	115.00	8.07%	8.51%	31-mar-27	Fijo 0%	-	84%	2.14	\$ 354,291.00	115.90	-0.78%
Bono del Tesoro CER 06/2027	TZX27	30-jun-27	100.00%	197.90	9.22%	9.91%	30-jun-27	Fijo 0%	-	80%	2.34	\$ 2,547,611.00	200.10	-1.10%
Bono del Tesoro CER 06/2027	TZXD7	15-dic-27	100.00%	140.90	9.12%	9.99%	15-dic-27	Fijo 0%	-	77%	2.76	\$ 11,944,821.00	141.00	-0.07%
Bono del Tesoro CER 12/2028	TZX28	30-jun-28	100.00%	181.50	9.16%	10.30%	30-jun-28	Fijo 0%	-	73%	3.24	\$ 6,677,647.00	181.65	-0.08%
Bono del Tesoro CER 11/2028	TX28	09-nov-28	80.00%	1,546.50	9.06%	8.87%	09-may-25	Fija 2.25%	-	109%	1.95	\$ 53,137.05	1,544.50	0.13%
Bono del Tesoro CER 2031	TX31	30-nov-31	100.00%	855.00	7.45%	7.32%	30-may-25	Fija 2.5%	Sem.	81%	4.20	\$ 45,562.00	840.30	1.75%
Discount \$ Ley Arg.	DICP	31-dic-33	95.00%	38,000.00	9.07%	8.87%	31-dic-24	Fija 5.83%	Sem.	90%	3.47	\$ 9,948.86	38,200.00	-0.52%
PAR \$ Ley Arg.	PARP	31-dic-38	100.00%	20,330.00	8.71%	8.53%	31-mar-25	1.77%	Sem.	60%	7.65	\$ 2,858.00	20,375.00	-0.22%
Tasa Fija														
Ticker	Maturity	V.R. (%)	Price	TIR	TNA	Next coupon	Cupon	TEM	Parity	M Dur	Outstanding (MM)	29-nov	MoM	
Letra del Tesoro Capitalizable	S13D4	13-dic-24	100.00%	125.57	44.04%	36.68%	13-dic-24	0.00%	3.04%	0.02	\$ 4,129,433.00	125.42	0.12%	
Letra del Tesoro Capitalizable	S17E5	17-ene-25	100.00%	125.59	42.41%	36.13%	17-ene-25	0.00%	2.95%	0.09	\$ 1,289,957.00	125.58	0.01%	
Letra del Tesoro Capitalizable	S31E5	31-ene-25	100.00%	162.88	43.40%	37.12%	31-ene-25	0.00%	3.01%	0.12	\$ 2,057,497.00	162.90	-0.01%	
Letra del Tesoro Capitalizable	S14F5	14-feb-25	100.00%	112.84	43.17%	37.20%	14-feb-25	0.00%	2.99%	0.15	\$ 1,422,200.00	112.71	0.12%	
Letra del Tesoro Capitalizable	S28F5	28-feb-25	100.00%	145.80	41.17%	36.27%	28-feb-25	0.00%	2.87%	0.17	\$ 1,127,251.00	145.80	0.00%	
Letra del Tesoro Capitalizable	S14M5	14-mar-25	100.00%	114.15	42.75%	37.40%	14-mar-25	0.00%	2.97%	0.20	\$ 800,646.00	114.15	0.00%	
Letra del Tesoro Capitalizable	S31M5	31-mar-25	100.00%	138.57	43.07%	37.97%	31-mar-25	0.00%	2.99%	0.23	\$ 611,614.00	138.65	-0.06%	
Letra del Tesoro Capitalizable	S16A5	16-abr-25	100.00%	115.20	42.54%	37.86%	16-abr-25	0.00%	2.96%	0.27	\$ 995,916.00	115.20	0.00%	
Letra del Tesoro Capitalizable	S28A5	28-abr-25	100.00%	113.55	42.45%	38.01%	28-abr-25	0.00%	2.95%	0.29	\$ 989,880.00	113.35	0.18%	
Letra del Tesoro Capitalizable	S16Y5	16-may-25	100.00%	116.90	42.03%	38.00%	16-may-25	0.00%	2.93%	0.33	\$ 717,552.00	116.90	0.00%	
Letra del Tesoro Capitalizable	S30Y5	30-may-25	100.00%	115.10	41.50%	37.82%	30-may-25	0.00%	2.89%	0.35	\$ 961,263.00	114.99	0.10%	
Letra del Tesoro Capitalizable	S18J5	18-jun-25	100.00%	122.45	41.52%	38.20%	18-jun-25	0.00%	2.90%	0.39	\$ 1,588,543.21	122.30	0.12%	
Letra del Tesoro Capitalizable	S30J5	30-jun-25	100.00%	120.58	40.68%	37.70%	30-jun-25	0.00%	2.85%	0.42	\$ 917,336.00	120.43	0.12%	
Letra del Tesoro Capitalizable	S31L5	31-jul-25	100.00%	118.25	40.30%	37.93%	31-jul-25	0.00%	2.82%	0.48	\$ 332,567.00	118.36	-0.09%	
Letra del Tesoro Capitalizable	S15G5	15-ago-25	100.00%	115.69	40.61%	38.48%	15-ago-25	0.00%	2.84%	0.50	\$ 746,933.00	115.80	-0.09%	
Letra del Tesoro Capitalizable	S29G5	29-ago-25	100.00%	123.10	39.95%	38.14%	29-ago-25	0.00%	2.80%	0.53	\$ 1,063,900.00	123.00	0.08%	
Letra del Tesoro Capitalizable	S12S5	12-sep-25	100.00%	123.05	39.15%	37.66%	12-sep-25	0.00%	2.75%	0.56	\$ 828,692.00	123.00	0.04%	
Letra del Tesoro Capitalizable	S30S5	30-sep-25	100.00%	122.25	38.31%	37.18%	30-sep-25	0.00%	2.70%	0.60	\$ 457,562.00	122.19	0.05%	
Bono del Tesoro Capitalizable	T17O5	17-oct-25	100.00%	119.85	38.20%	37.37%	17-oct-25	0.00%	2.69%	0.63	\$ 674,297.00	120.00	-0.13%	
Letra del Tesoro Capitalizable	T15D5	15-dic-25	100.00%	123.95	36.43%	36.62%	15-dic-25	0.00%	2.59%	0.76	\$ 1,084,427.00	123.90	0.04%	
Letra del Tesoro Capitalizable	T13F6	13-feb-26	100.00%	100.40	35.91%	37.07%	-	0.00%	2.55%	1.00%	\$ 1,338,246.26	123.90	-18.97%	
Bote 10/2026	TO26	18-oct-26	100.00%	82.90	31.49%	29.33%	17-abr-25	Fija 15.50%	2.28%	81%	1.43	\$ 96,569.71	82.79	0.13%
Tasa Variable														
Ticker	Maturity	V.R. (%)	Price	TIR	TNA	Next coupon	Cupon	Frec	Parity	M Dur	Outstanding (MM)	29-nov	MoM	
Ciudad de Buenos Aires 2028	BDC28	31-ene-25	100.00%	103.00	45.23%	39.11%	24-feb-25	Badlar + 375pbs	Trim.	102%	1.76	\$ 13,262.47	104.95	-1.86%
Provincia de Buenos Aires 2025	PBA25	12-abr-25	100.00%	106.65	42.88%	37.33%	13-ene-25	Badlar + 375pbs	Trim.	101%	0.31	\$ 30,000.00	106.15	0.47%
Dólar Linked														
Ticker	Maturity	V.R. (%)	Price	TIR	TNA	Next coupon	Cupon	Frec	Parity	M Dur	Outstanding (MM)	29-nov	MoM	
Bono Dual 01/2025	TDE25	31-ene-25	100.00%	126,000.00	-74.24%	-121.81%	31-ene-25	0.00%	-	125%	-0.74	\$ 8,596.00	126,500.00	-0.40%
Bote vinculado al Dólar 03/2025	TV25	30-mar-25	100.00%	99,000.00	7.91%	7.76%	30-mar-25	0.50%	Sem.	98%	0.31	\$ 329.00	99,300.00	-0.30%
Bono del Tesoro vinculado al Dólar 06/2025	TZV25	30-jun-25	100.00%	95,900.00	4.10%	9.64%	30-jun-25	0.00%	-	95%	0.59	\$ 1,763.00	97,700.00	-1.84%
Bono del Tesoro vinculado al Dólar 12/2025	TZVD5	15-dic-25	100.00%	92,870.00	8.66%	8.68%	30-jun-25	0.00%	-	92%	1.05	\$ 527.00	93,000.00	-0.14%
Bono del Tesoro vinculado al Dólar 06/2026	TZV26	30-jun-26	100.00%	89,900.00	7.81%	7.99%	30-jun-26	0.00%	-	89%	1.57	\$ 383.00	90,500.00	-0.66%



Curva Pesos



DISCLAIMER

Este informe ha sido elaborado a título informativo. El presente NO debe ser tomado como una recomendación o instrucción, y no reviste carácter de ofertas de productos y/o servicios ni solicitud de orden de compra y/o venta. Banco CMF S.A. no será responsable por ningún error y/u omisión del contenido.